

**MEDIA CONTACT**  
Rosa Mendez  
[detrmedia@detr.nv.gov](mailto:detrmedia@detr.nv.gov)

**PRESS RELEASE**



**STEVE SISOLAK**  
Governor

**ELISA CAFFERATA**  
Director

**DAVID SCHMIDT**  
Chief Economist

**RESEARCH AND ANALYSIS BUREAU**  
**UNEMPLOYMENT INSURANCE CLAIMS PRESS RELEASE**

**For Immediate Release**  
**October 2, 2020**

## **Initial Claims at Lowest Point Since Mid-March; Continued Claims Below 200,000 for First Time Since Mid-April**

**CARSON CITY, NV** - Finalized data from the Nevada Department of Employment, Training and Rehabilitation (DETR) show initial claims for unemployment insurance (UI) totaled 7,525 for the week ending September 26, down 673 claims, or 8.2 percent, compared to last week's total of 8,198 claims. This is the lowest weekly total of initial claims filed since mid-March. Through the week ending September 26, there have been 704,670 initial claims filed in 2020, 680,754 of which have been filed since the week ending March 14.

Continued claims, which represent the current number of insured unemployed workers filing weekly for unemployment insurance benefits, fell for the seventh consecutive week to 190,613, a decline of 12,795 claims, or 6.3 percent, from the previous week's total of 203,408. This is the fewest continued claims since the report week ending April 11 when there were 189,007 claims filed.

Nevada's insured unemployment rate, which is the ratio of continued claims in a week to the total number of jobs covered by the unemployment insurance system (also known as covered employment), fell by 1.0 percentage points to 13.7 percent. It should be noted that the calculation of the insured unemployment rate is different from that of the state's total unemployment rate.

The Pandemic Unemployment Assistance (PUA) program, which provides up to 46 weeks of benefits for the self-employed, 1099 contract workers, and gig workers saw 11,198 initial claims filed in the week September 26, a decrease of 240, or 2.1 percent, from last week's total of 11,438. Through the week ending September 26, 474,133 PUA initial claims have been filed.

PUA continued claims totaled 95,829 in the week ending September 26, a decline of 5,964, or 5.2 percent, from the previous week's revised total of 101,064. Weekly PUA continued claims are now reported by the benefit week claimed. This follows the reporting procedure for regular continued claims and allows us to understand the number of unemployed workers filing weekly for PUA benefits.

Nevada's Pandemic Emergency Unemployment Compensation (PEUC) program, which provides up to 13 weeks of benefits to individuals who have exhausted their regular unemployment benefits, saw 37,346 claims filed in the week, an increase of 5,964 claims from a week ago. PEUC claims are expected to increase as large groups of regular program filers exhaust their regular unemployment benefits.

Nevada's State Extended Benefit (SEB) program, which provides up to 20 weeks of benefits to individuals who have exhausted both their regular unemployment benefits and PEUC program benefits, saw 4,146 claims filed in the week, an increase of 379 claims from a week ago.

Nationally, the advance figure for unadjusted regular initial claims was, 786,942 a decrease of 40,263 claims from the previous week. The national insured unemployment rate for the week ending September 19 was 7.8 percent, a 0.7 percentage point decline from the previous week's rate. The national rate is reported with a one-week lag.

State level data from the U.S. Department of Labor can be found here [[DOL Weekly Claims Report](#)]. Please note that state data from the U.S. Department of Labor tends to be released more slowly than national data. View the state level unemployment insurance claims report for the week ending September 26 here [[Weekly Report](#)]. A dashboard for Nevada weekly claims can be viewed here [[Weekly Dashboard](#)]. A page for Nevada weekly claims characteristics by program can be viewed here [[Weekly Claims Characteristics](#)]. A monthly claims dashboard can be found here [[Monthly Dashboard](#)] and a monthly claims demographic page can be found here [[Monthly Demographics](#)]. View weekly county claims trends here [[Weekly by County](#)]. Dashboards are interactive reports that allow you to dig deeper into the data.

To file for unemployment in the State of Nevada, please use the online application available 24/7 at <http://ui.nv.gov/css.html>. People unable to file online may file via telephone by calling a UI Claims Call Center between 8 a.m. and 8 p.m., Monday through Friday and Saturday between 8 a.m. and noon. Northern UI Call Center: (775) 684-0350; Southern UI Call Center: (702) 486-0350; Rural areas and Out-of-State: (888) 890-8211. Claimants are highly encouraged to use the internet to file their UI claims, as it is the fastest and most convenient way to file and reserves the phone lines for individuals who are not able or do not have the necessary resources to file online. Online filing during non-peak hours, such as early mornings, at night or weekends is also highly recommended. To continue to receive benefits, claimants must file weekly.

DETR is actively working with law enforcement entities and the Department of Labor to detect, prevent and address unemployment fraud. Employers and individuals who believe they have been a victim of unemployment fraud, can file a report with the agency by visiting [www.detr.nv.gov](http://www.detr.nv.gov) and selecting the [Fraud Reporting Form](#) on the left under "Quick links." Once a report is filed with the Department of Employment, Training and Rehabilitation (DETR), nothing else is required by the reporting party. DETR will flag the account so payments are not issued. If needed, the Department may reach out for additional information. To view what additional steps individuals and employers can take should they believe a fraudulent claim has been filed, review DETR's [fraud flyer](#) located on the Bulletin Board at [www.detr.nv.gov](http://www.detr.nv.gov).

For Nevada workers who are self-employed, 1099 contract workers, and gig workers, Nevada's Pandemic Unemployment Assistance program (PUA) is available. For further information regarding the PUA program visit, [detr.nv.gov/pua#](http://detr.nv.gov/pua#). Individuals will be able to file online at [www.employnv.gov](http://www.employnv.gov) or call the PUA Call Center at (800) 603-9681 between 8 a.m. and 8 p.m., Monday through Friday, and Saturday between 8 a.m. and noon.

Claimants are encouraged to visit <http://ui.nv.gov/css.html> and at [detr.nv.gov/coronavirus](http://detr.nv.gov/coronavirus) to view important announcements and access essential resources. Online tutorial videos are also available in both English and Spanish and can be viewed on the [Nevada Unemployment Insurance](#) YouTube page.

###

Visit us <http://www.nevadaworkforce.com> and Follow us on Twitter: <http://www.twitter.com/NVlabormarket>

#### ABOUT THE RESEARCH AND ANALYSIS BUREAU

The Research and Analysis Bureau is Nevada's premier source for labor market information. A part of DETR, the Bureau is responsible for creating, analyzing, and reporting Nevada's labor market information, in cooperation with the United States Bureau of Labor Statistics (BLS).

# UNEMPLOYMENT INSURANCE CLAIMS

## INITIAL CLAIMS:

**7,525 REGULAR + 11,198 PUA**

Regular initial claims down 673 claims, or 8.2%, compared to the previous week.

PUA initial claims down 240, or 2.1%, compared to the previous week.

## CONTINUED CLAIMS:

**190,613 REGULAR + 95,829 PUA +  
37,346 PEUC + 4,146 SEB**

Regular continued claims down 12,795 claims, or 6.3%, compared to the previous week.

Fewest continued claims since the week ending April 11 when there were 189,007 claims filed.

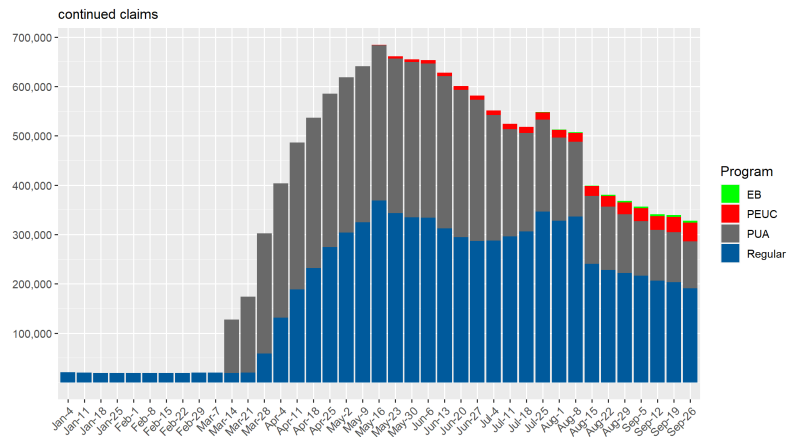
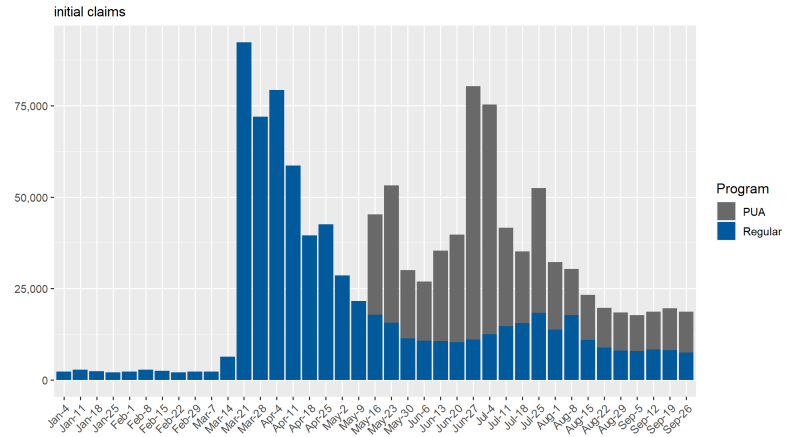
PUA continued claims down 5,235 claims, or 5.2%, compared to the previous week.

PEUC continued claims up 5,964 claims, or 19.0%, compared to the previous week.

SEB continued claims up 379 claims, or 10.1%, compared to the previous week.

Across all programs, there were a total of 327,934 claims filed in the week.

State of Nevada Weekly Claims for Unemployment Insurance  
weekly totals since start of 2020



Source: ETA 539



# State of Nevada Unemployment Insurance Claims

Filing Statistics for Week Ending 9/26/2020

Department of Employment, Training & Rehabilitation

Elisa Cafferata, Director

Jeffrey Frischmann, Acting Administrator

David Schmidt, Chief Economist

*Prepared by the Research and Analysis Bureau  
Updated: 2020-10-02*

# Weekly Federal UI Claim Statistics

# UI Initial Claims by Week

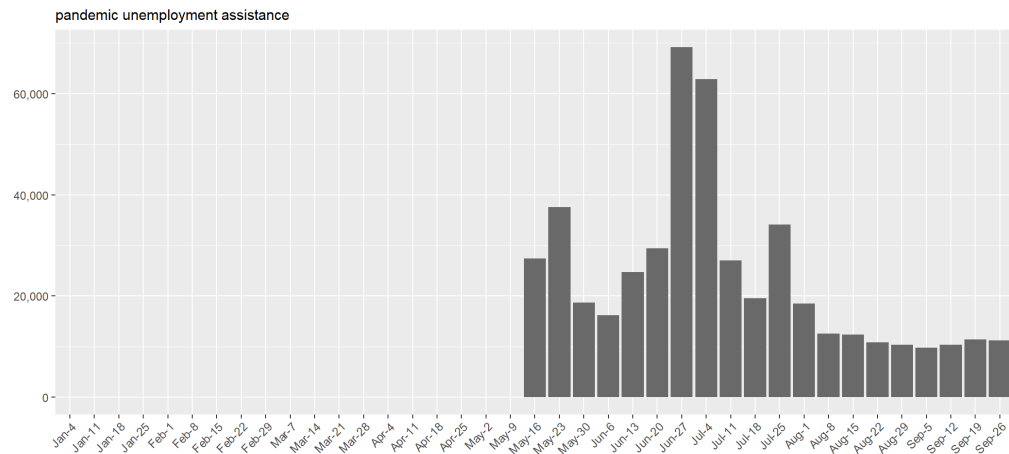
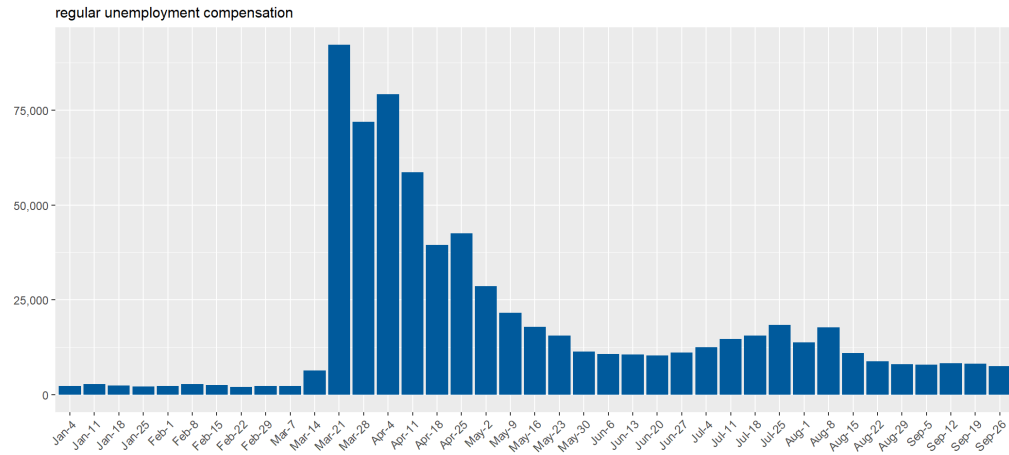
Final initial claims totals for week ending 9/26/2020 (ETA 539).

Regular initial claims totaled 7,525 in the week, down 673 claims, or 8.2%, compared to the previous week.

Pandemic Unemployment Assistance (PUA) claims totaled 11,198 in the week, down 240, or 2.1%, compared to the previous week.

A claimant may have filed BOTH a regular initial claim and a PUA initial claim.

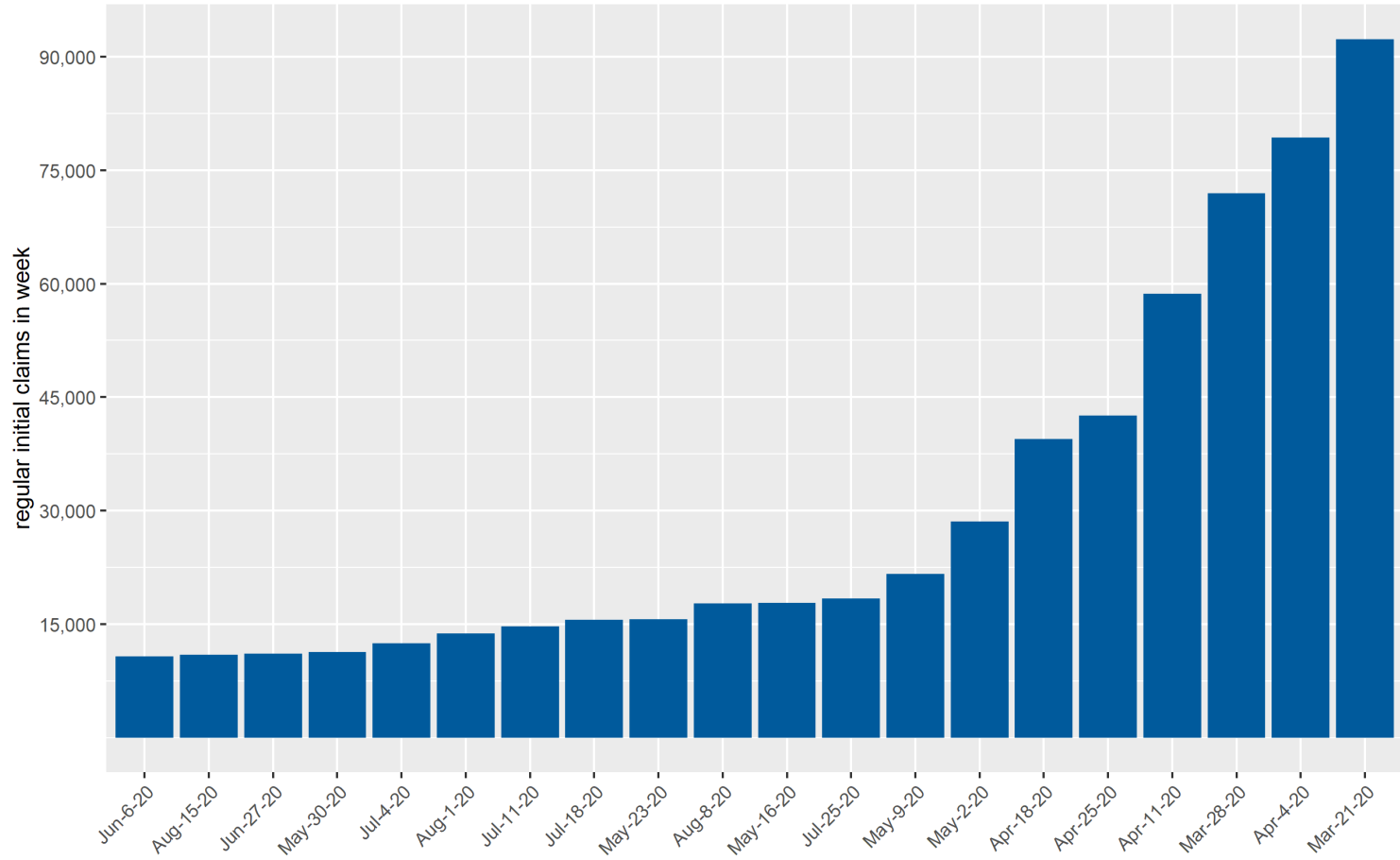
State of Nevada Weekly Initial Claims for Unemployment Insurance by program



Source: ETA 539

# State of Nevada Initial Claims All-Time Weekly Highs

State of Nevada Weekly Initial Claims  
highest 20 weeks in state history



Source: ETA 539

# UI Continued Claims by Week

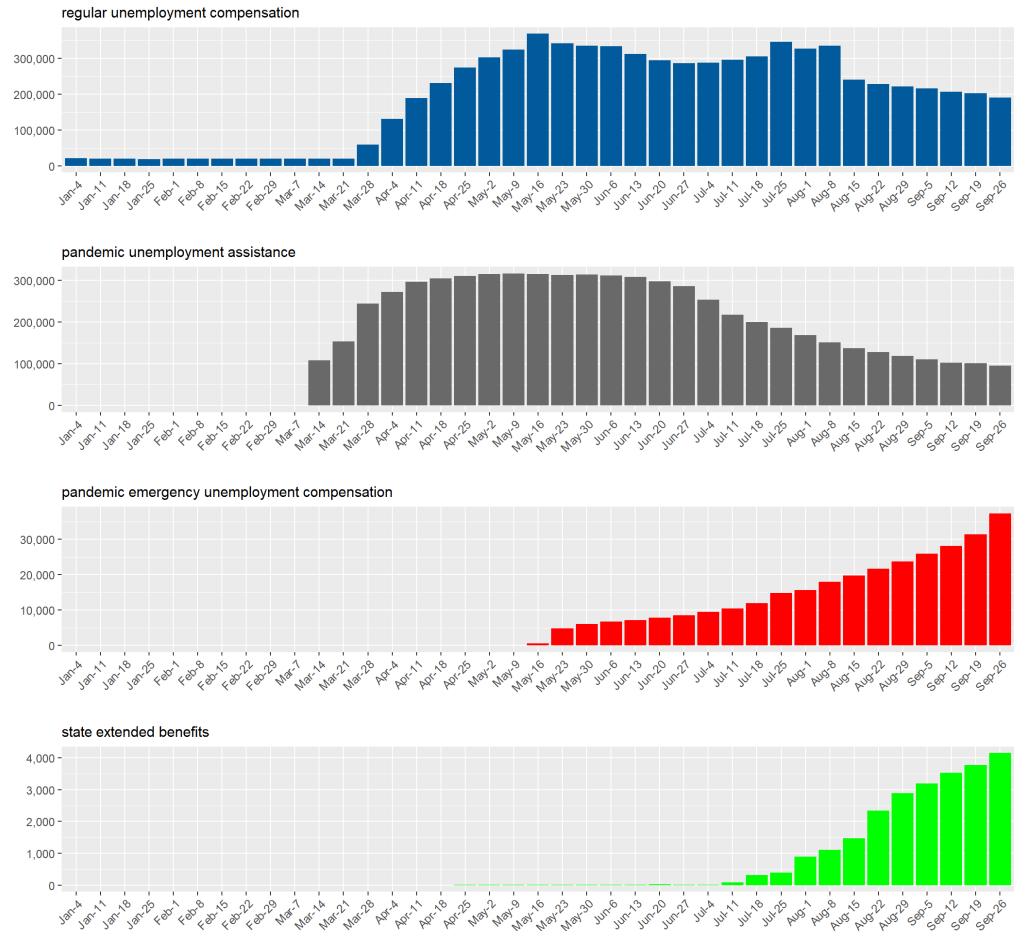
Regular continued claims totaled 190,613 in the week, down 12,795 claims, or 6.3%, compared to the previous week.

Pandemic Unemployment Assistance continued claims totaled 95,829 in the week, down 5,235 claims, or 5.2%, compared to the previous week. PUA continued claims are backdated to show the weeks PUA was claimed.

Pandemic Emergency Unemployment Compensation claims totaled 37,346 in the week, up 5,964 claims, or 19.0%, compared to the previous week.

State Extended Benefit claims totaled 4,146 in the week, up 379 claims, or 10.1%, compared to the previous week.

State of Nevada Weekly Continued Claims for Unemployment Insurance by program



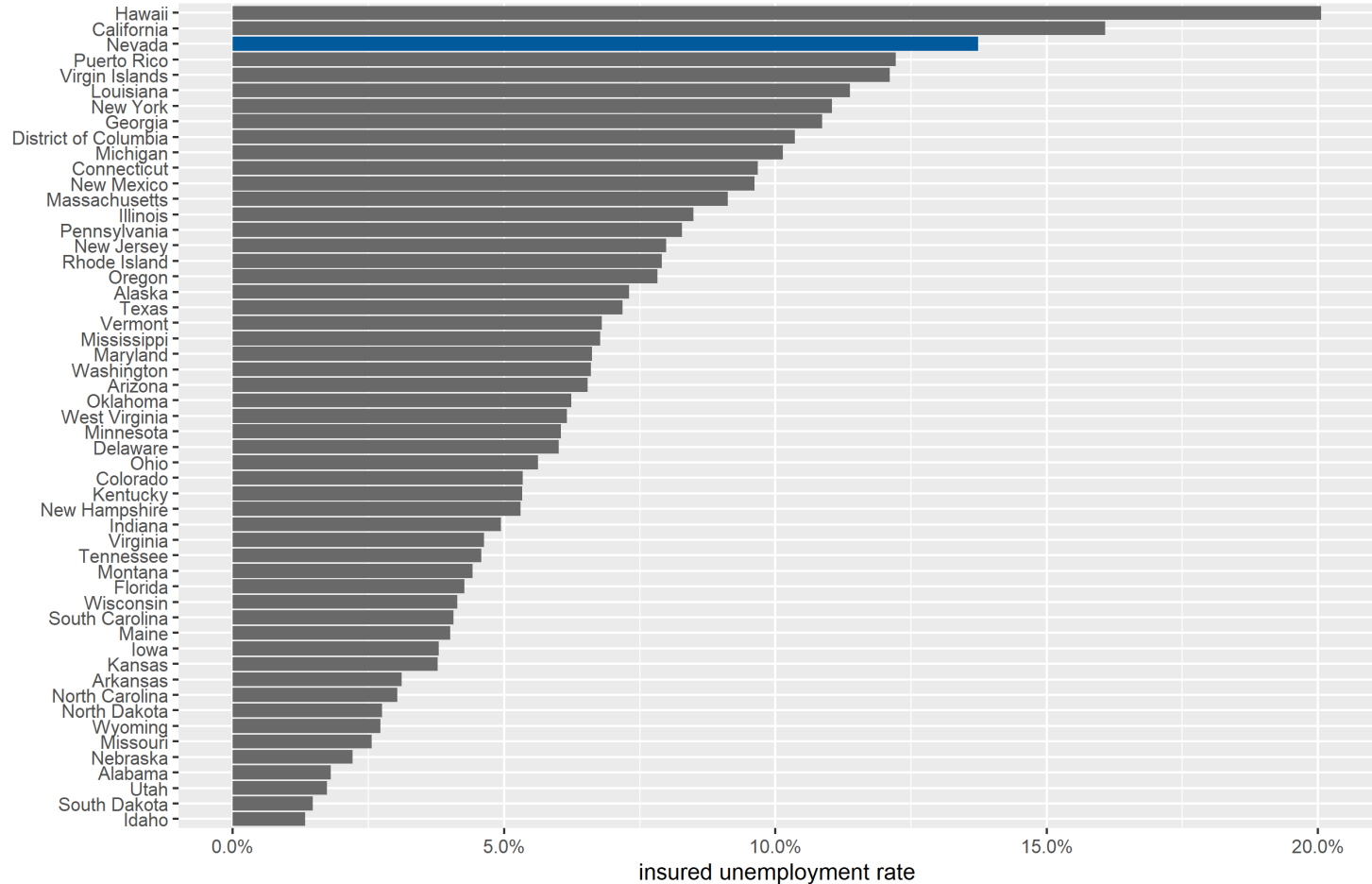
Source: ETA 539



# Insured Unemployment Rate

## Insured Unemployment Rate by State

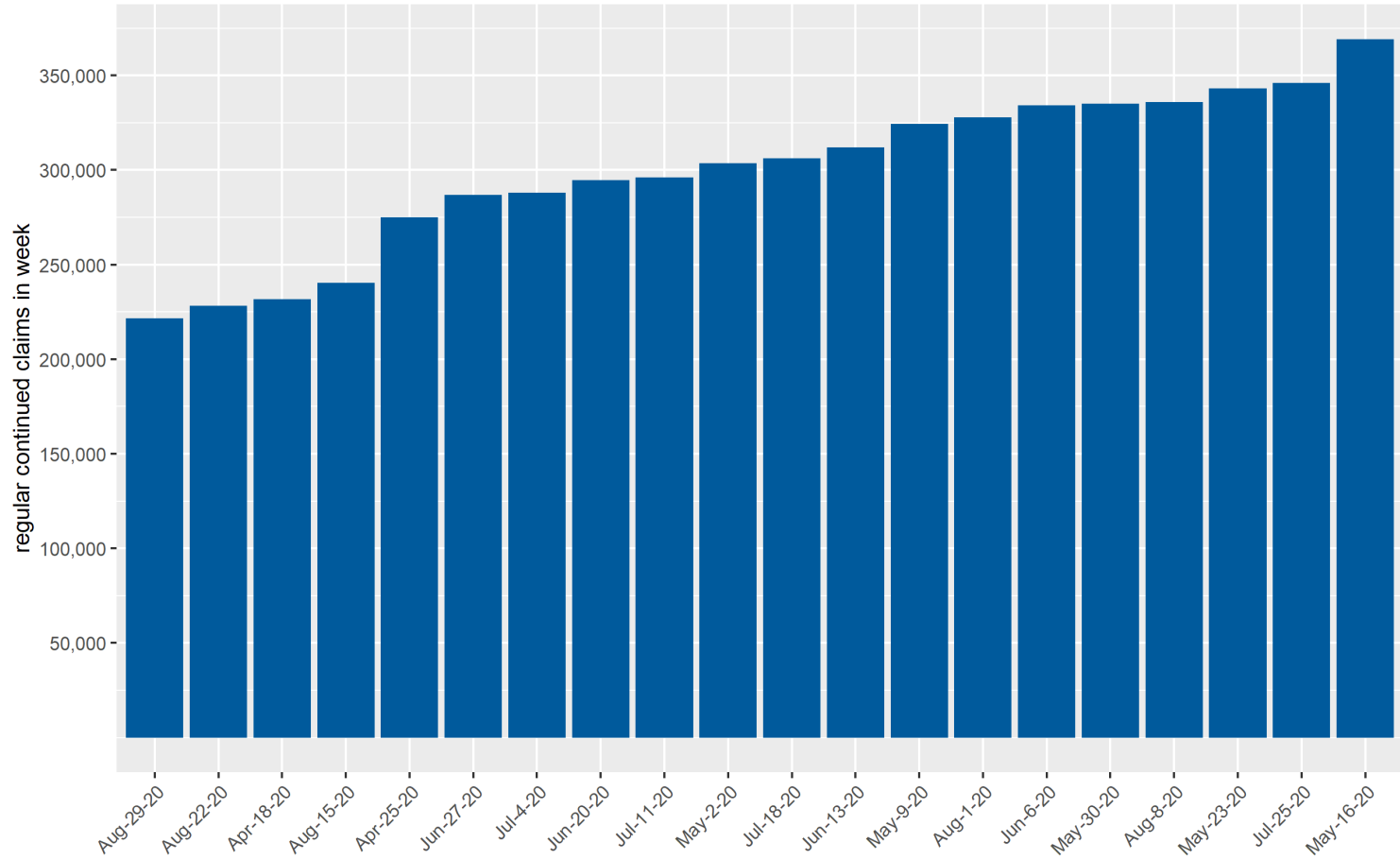
weekly rate by state for most recent available week



Source: ETA 539

# State of Nevada Continued Claims All-Time Weekly Highs

State of Nevada Weekly Continued Claims  
highest 20 weeks in state history



Source: ETA 539

# UI Trust Fund Status

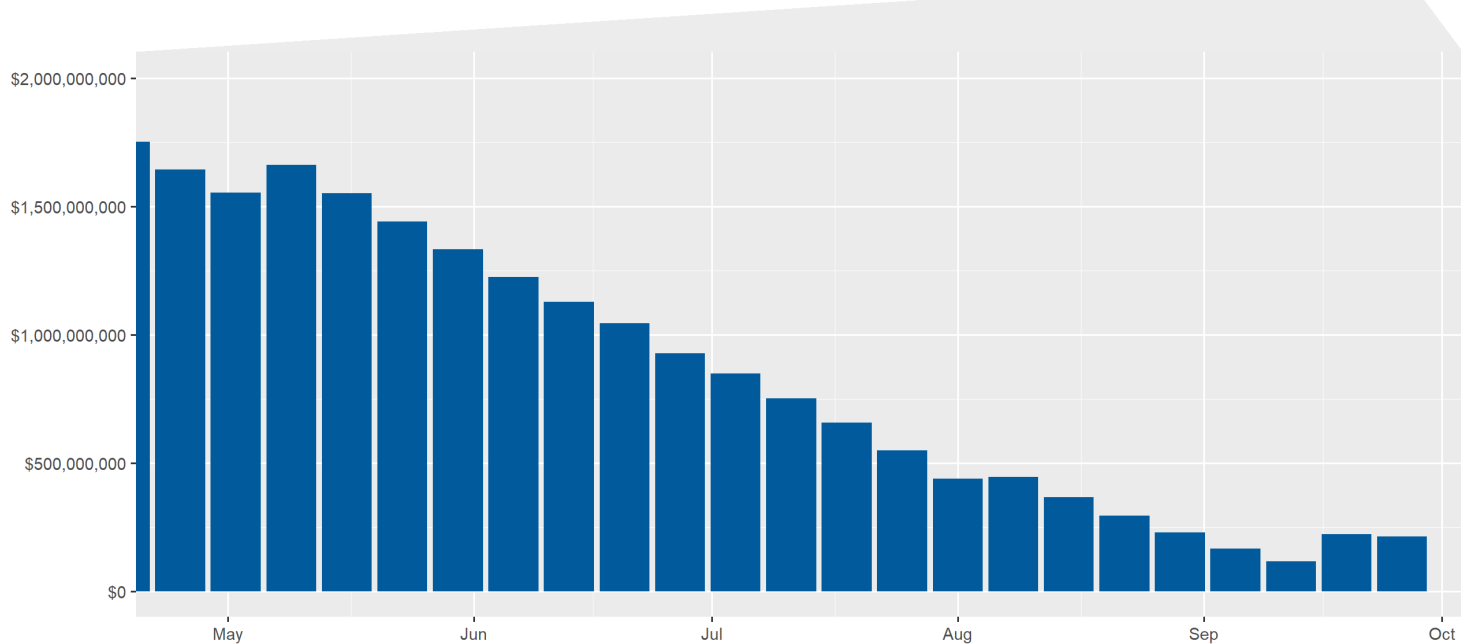
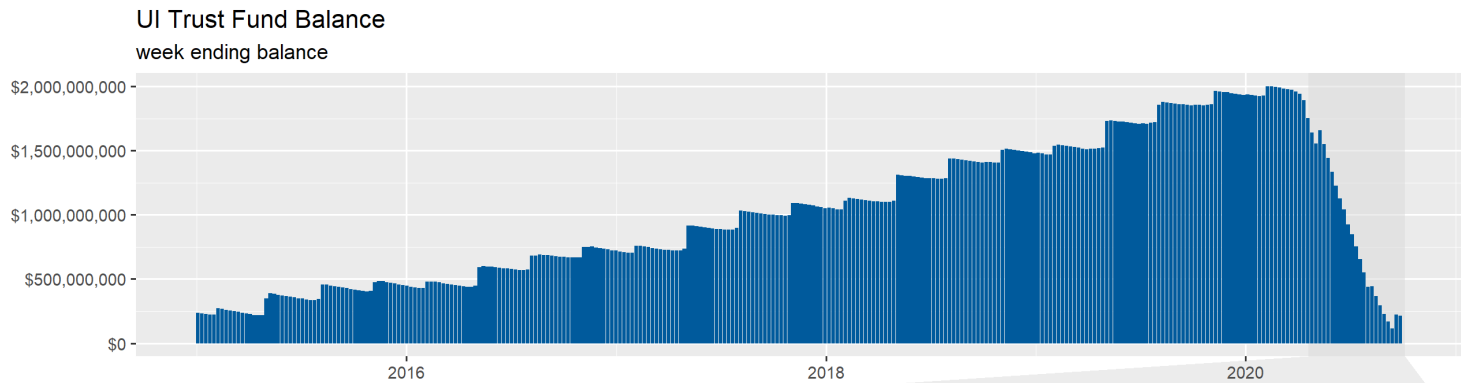
# UI Trust Fund Balance & Payment Activity

Reported totals and amounts for week ending 9/26/2020

This Trust Fund balance is the end of week balance from DETR Financial Management reports. Due to lags in reporting of transactions and adjustments, week-to-week totals may change. Weeks of benefits remaining is calculated by dividing the current balance by last week's regular UI payments total. NOTE: Nevada received federal reimbursement of benefits paid from waiving the waiting week early in the pandemic. These funds were used to pay a portion of this week's regular benefits.

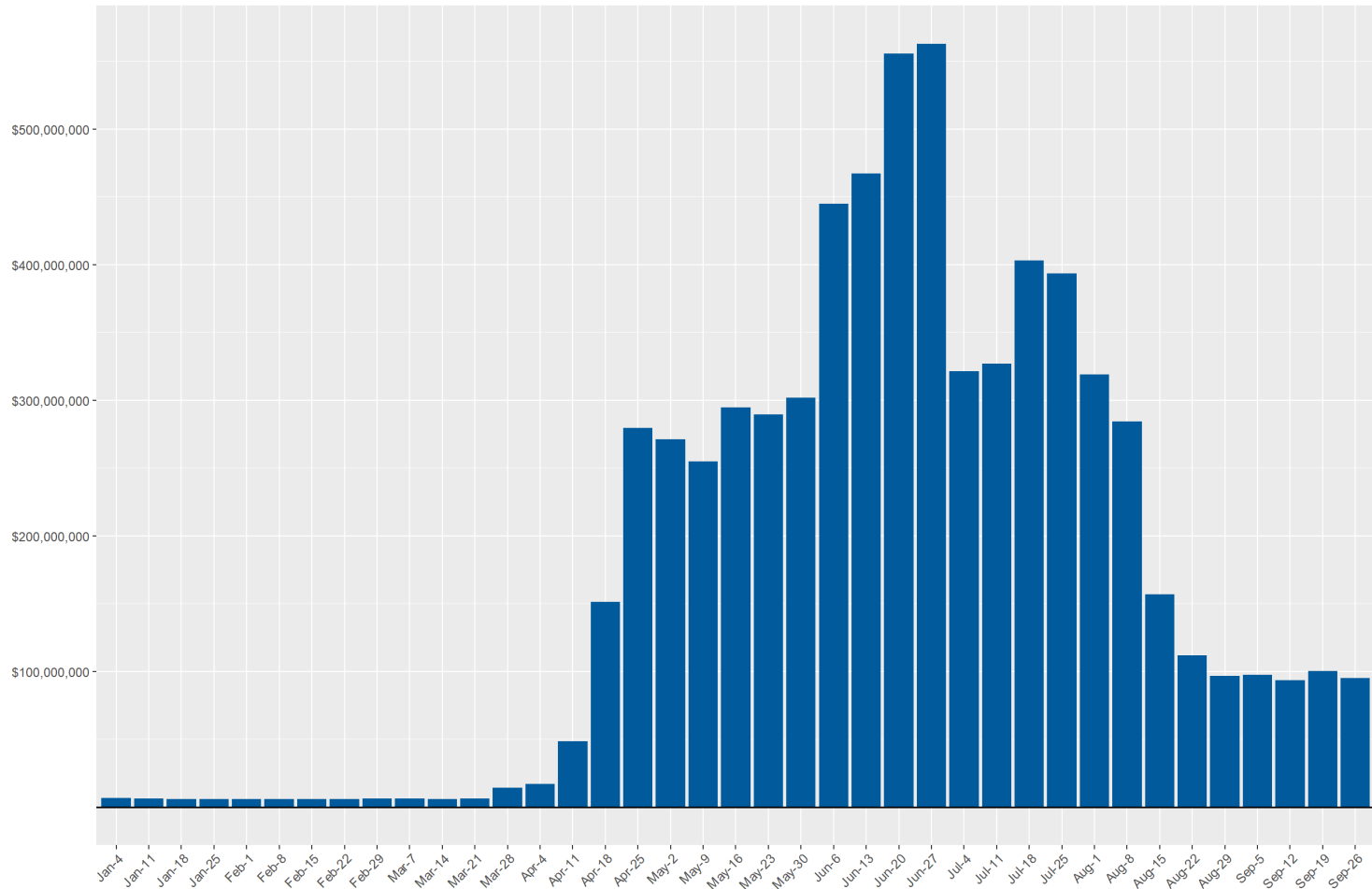
Measure	Current Week	Previous Week	Change from Previous Week	Year-to-Date
<b>Trust Fund Balance</b>	\$214,914,150	\$223,317,246	-\$8,403,096	-
<b>Weeks of Benefits in Trust Fund</b>	3.67	3.52	0.15	-
<b>Regular UI Payments</b>	\$58,526,931	\$63,427,517	-\$4,900,586	\$2,459,496,703
<b>Regular-FPUC Payments</b>	\$6,558,420	\$7,825,800	-\$1,267,380	\$2,872,693,080
<b>PEUC Payments</b>	\$9,312,408	\$7,976,342	\$1,336,066	\$83,591,328
<b>PUA Payments</b>	\$14,439,917	\$14,862,792	-\$422,875	\$550,138,049
<b>PUA-FPUC Payments</b>	\$5,175,960	\$5,064,866	\$111,094	\$852,478,151
<b>SEB Payments</b>	\$1,082,562	\$1,011,983	\$70,579	\$5,526,154
<b>All Programs</b>	\$95,096,198	\$100,169,300	-\$5,073,102	\$6,823,923,464

# Trust Fund Balance



# Weekly Payments

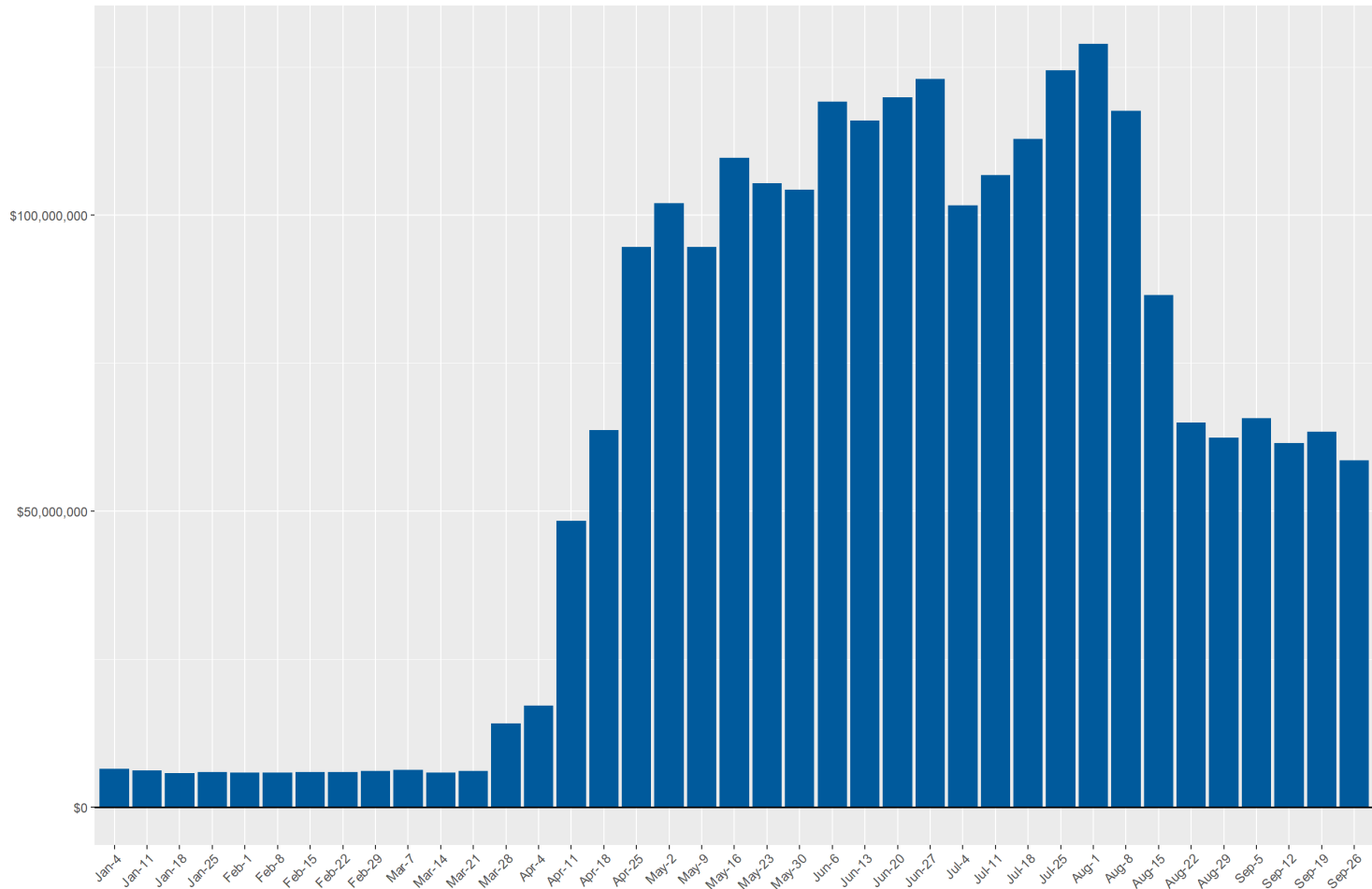
Unemployment Insurance Weekly Payments  
compensation total for all programs



Source: DETR Internal Reporting

# Weekly Payments by Program (Regular UI)

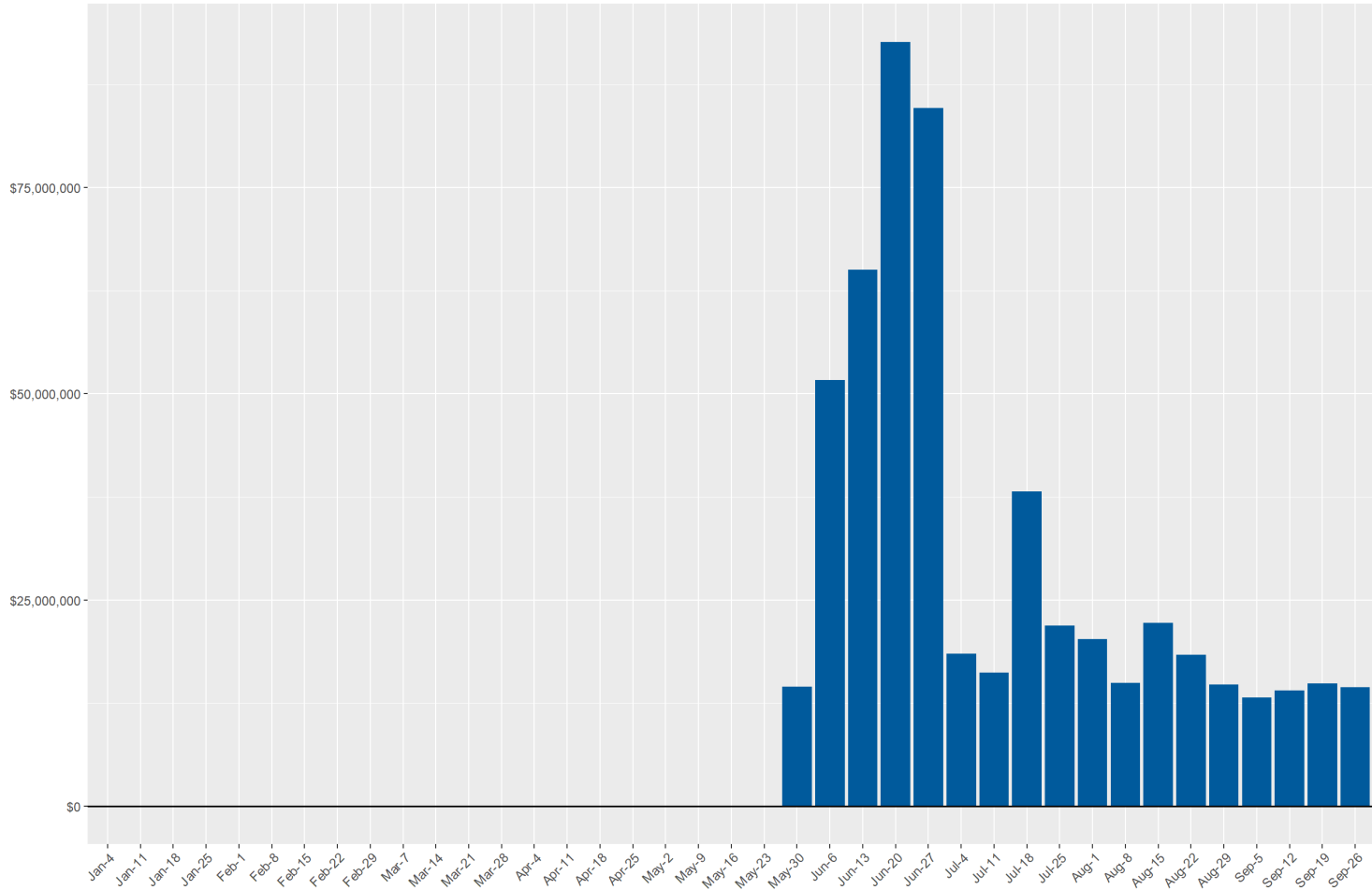
Unemployment Insurance Weekly Payments  
regular unemployment insurance compensation



Source: DETR Internal Reporting

# Weekly Payments by Program (PUA)

Unemployment Insurance Weekly Payments  
pandemic unemployment assistance compensation

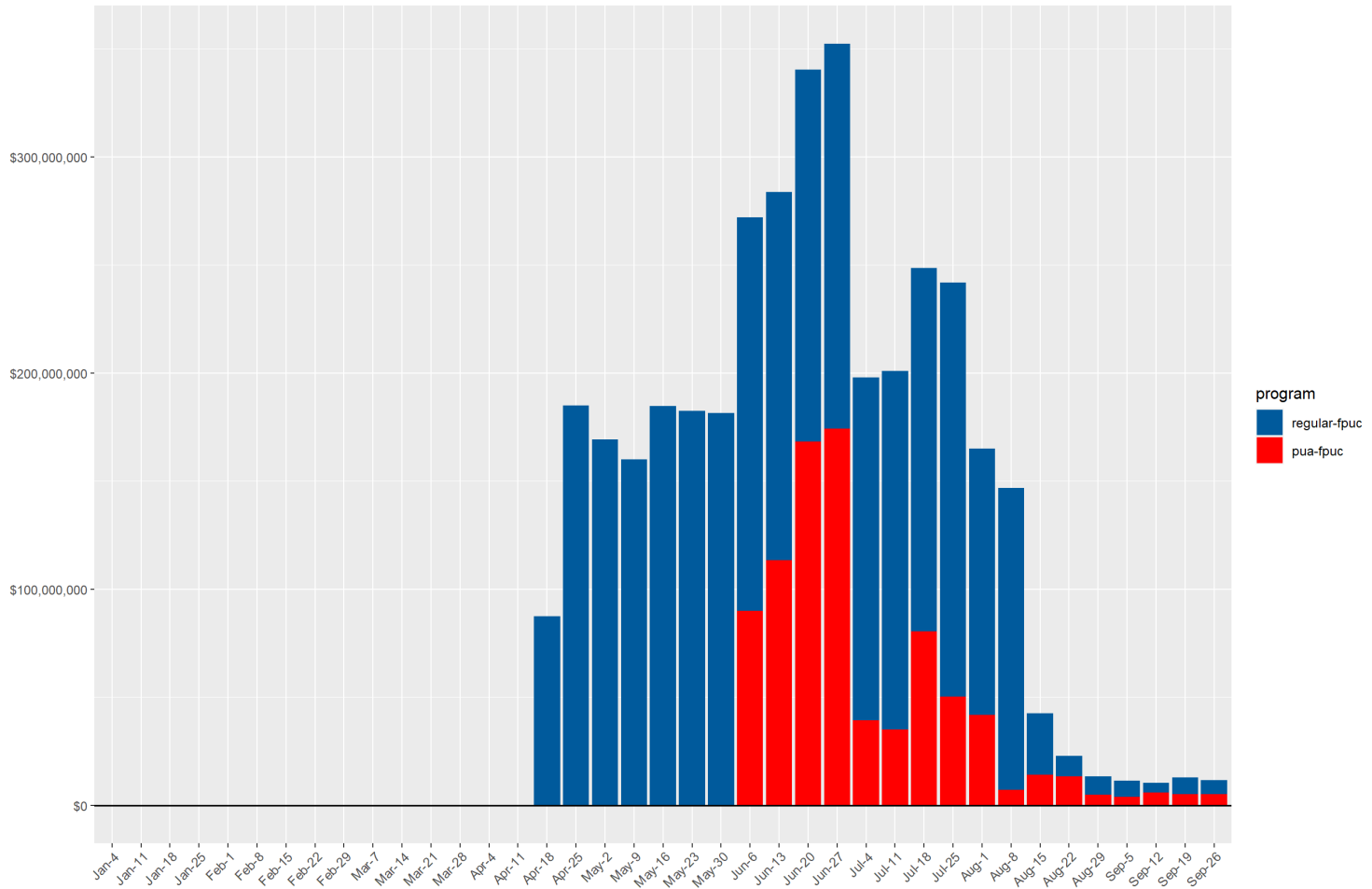


Source: DETR Internal Reporting



# Weekly Payments by Program (FPUC)

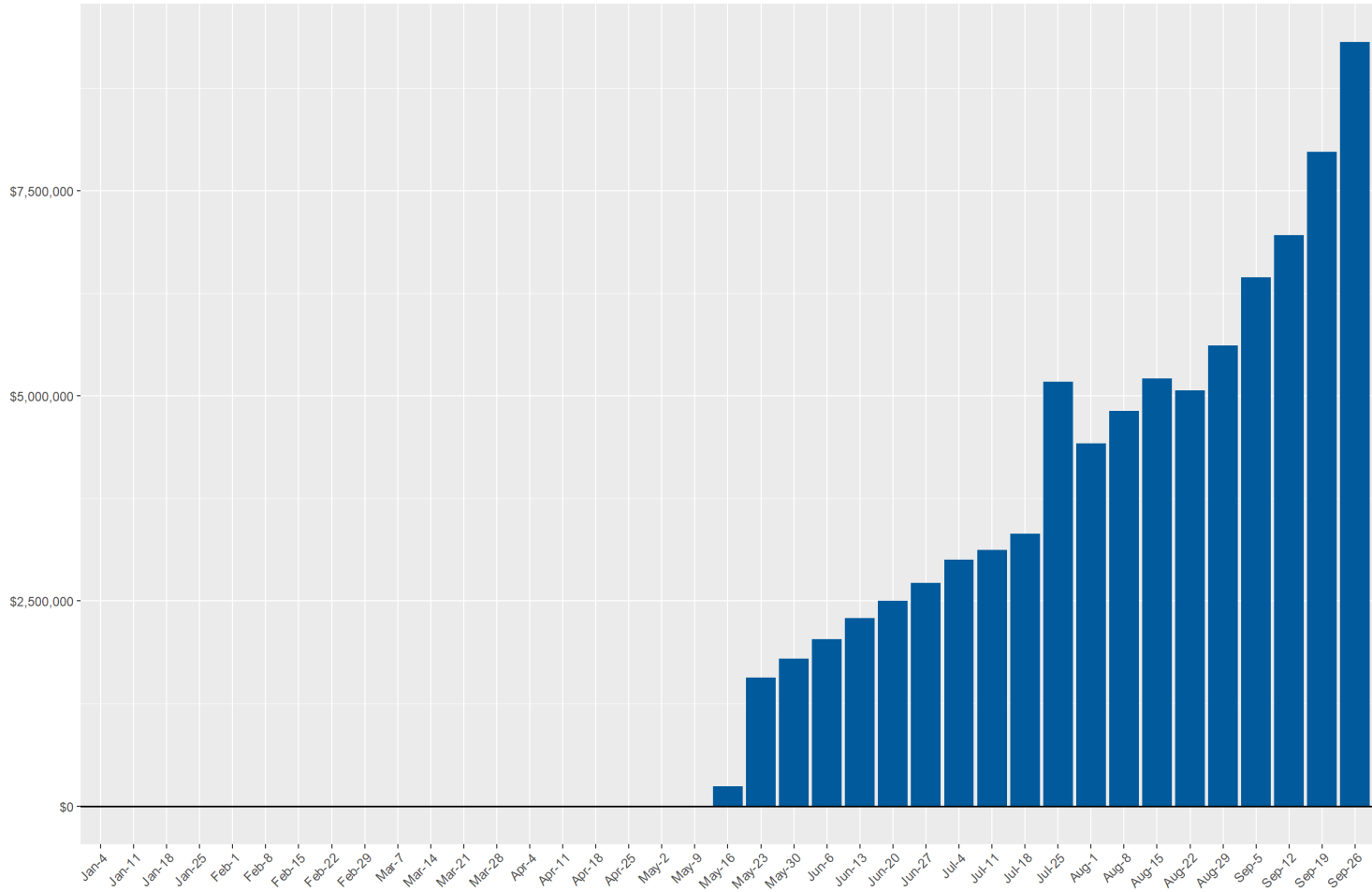
Unemployment Insurance Weekly Payments  
federal pandemic unemployment compensation



Source: DETR Internal Reporting

# Weekly Payments by Program (PEUC)

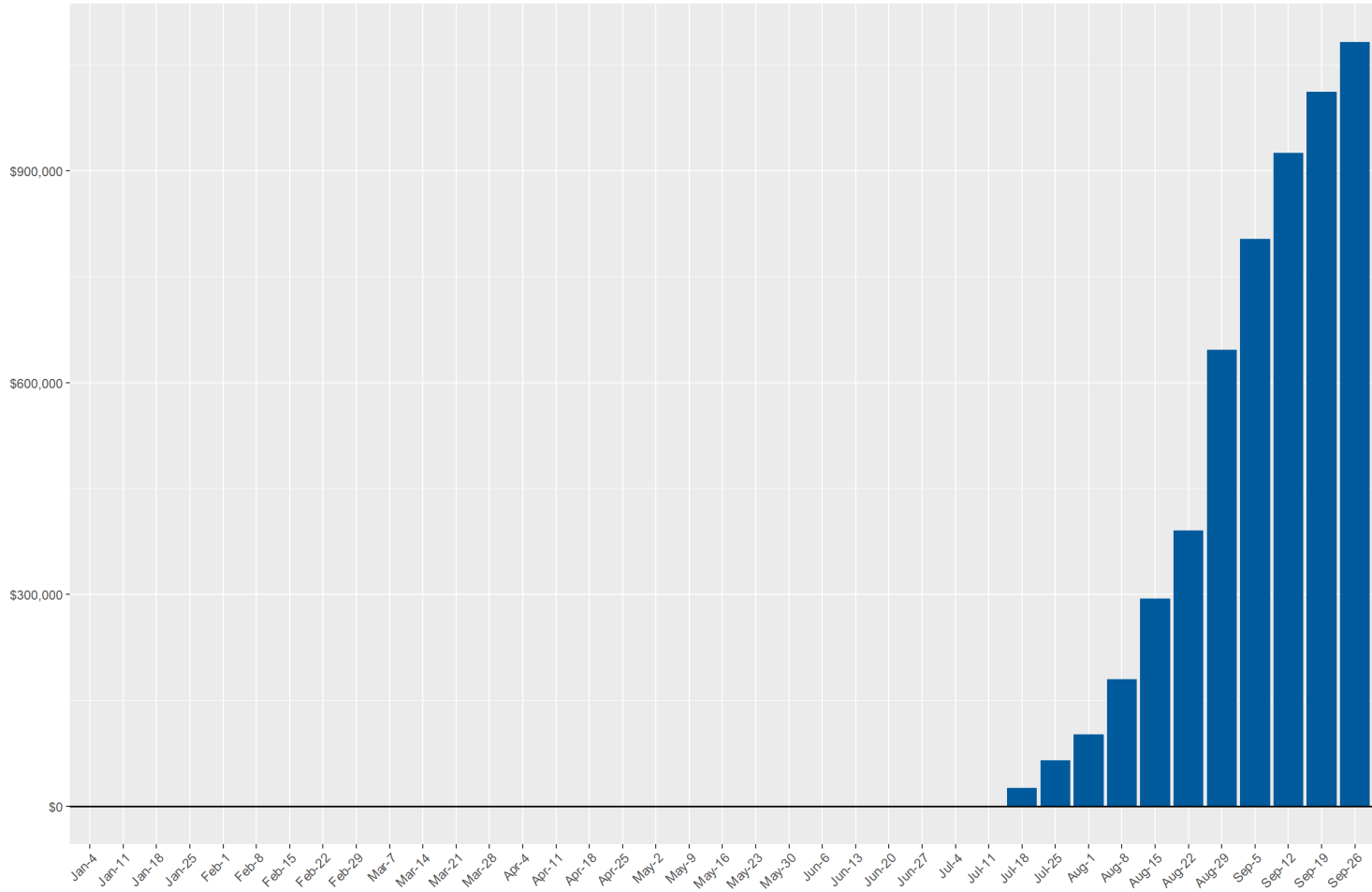
Unemployment Insurance Weekly Payments  
federal pandemic emergency unemployment compensation



Source: DETR Internal Reporting

# Weekly Payments by Program (SEB)

Unemployment Insurance Weekly Payments  
state extended benefits compensation



Source: DETR Internal Reporting

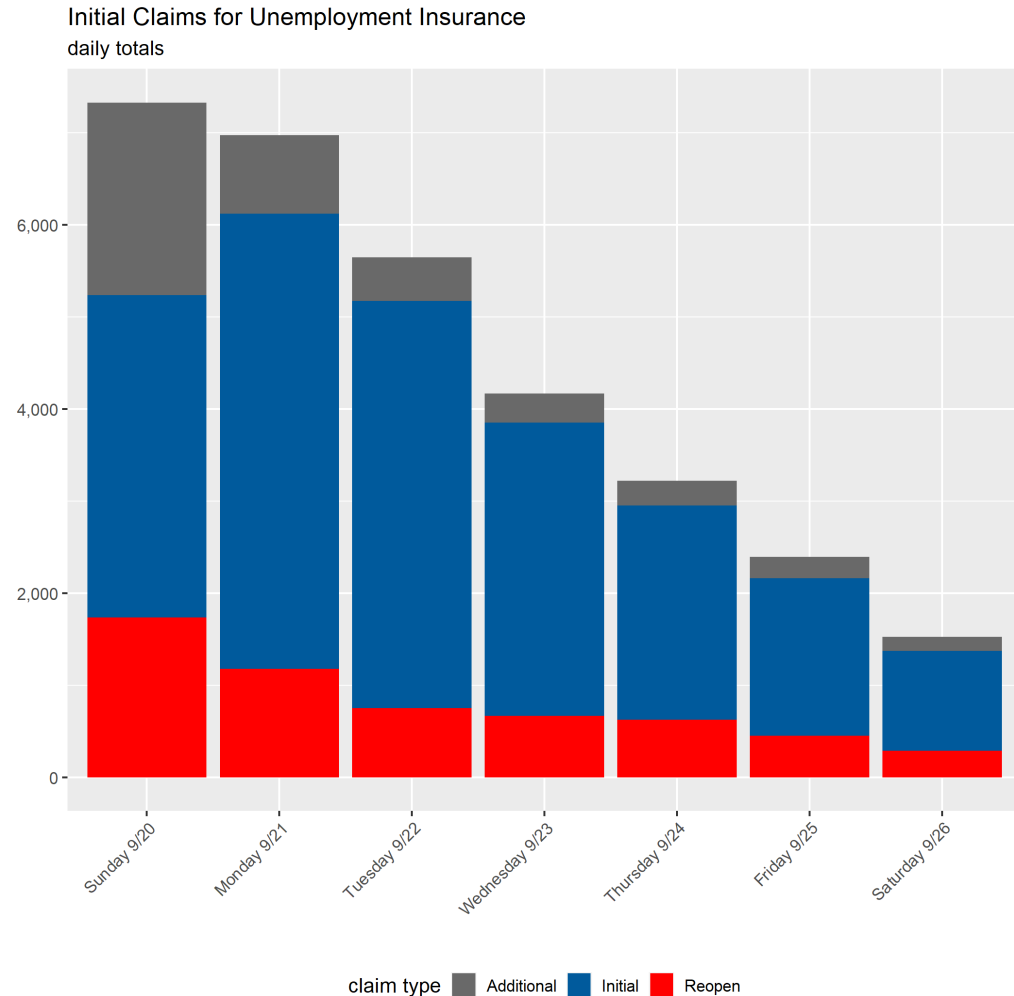
# UI Daily Claim Statistics (Regular UC)

# UI Initial Claims by Day for Week Ending 9/26/2020

Initial claims by type and filing method for week ending 9/26/2020.

Initial claims include new, additional, and reopened (see end of document for glossary of terms). Reopened claims are not counted in federal reporting totals.

Daily data is unofficial and is unlikely to match federal reporting totals due to reporting differences.



Source: DETR Internal Reporting

## UI Initial Claims by Day for Week Ending 9/26/2020

Claim Type	Filing Method	Sunday 9/20	Monday 9/21	Tuesday 9/22	Wednesday 9/23	Thursday 9/24	Friday 9/25	Saturday 9/26	Total
<b>Claim Type &amp; Filing Method</b>									
<b>Additional</b>	Internet	513	368	229	203	201	187	123	1,824
<b>Additional</b>	Phone	1,578	485	243	112	70	44	30	2,562
<b>Initial</b>	Internet	3,499	4,558	4,085	2,894	2,070	1,555	1,083	19,744
<b>Initial</b>	Phone	2	389	339	292	255	157	3	1,437
<b>Reopen</b>	Internet	1,703	1,076	672	593	555	392	280	5,271
<b>Reopen</b>	Phone	33	100	79	74	70	59	7	422
<b>Filing Method</b>									
<b>Total</b>	Internet	5,715	6,002	4,986	3,690	2,826	2,134	1,486	26,839
<b>Total</b>	Phone	1,613	974	661	478	395	260	40	4,421
<b>Total</b>									
<b>Total</b>	<b>All</b>	<b>7,328</b>	<b>6,976</b>	<b>5,647</b>	<b>4,168</b>	<b>3,221</b>	<b>2,394</b>	<b>1,526</b>	<b>31,260</b>

# UI Initial Claims by Day Comparison to Previous Week

## Previous Week

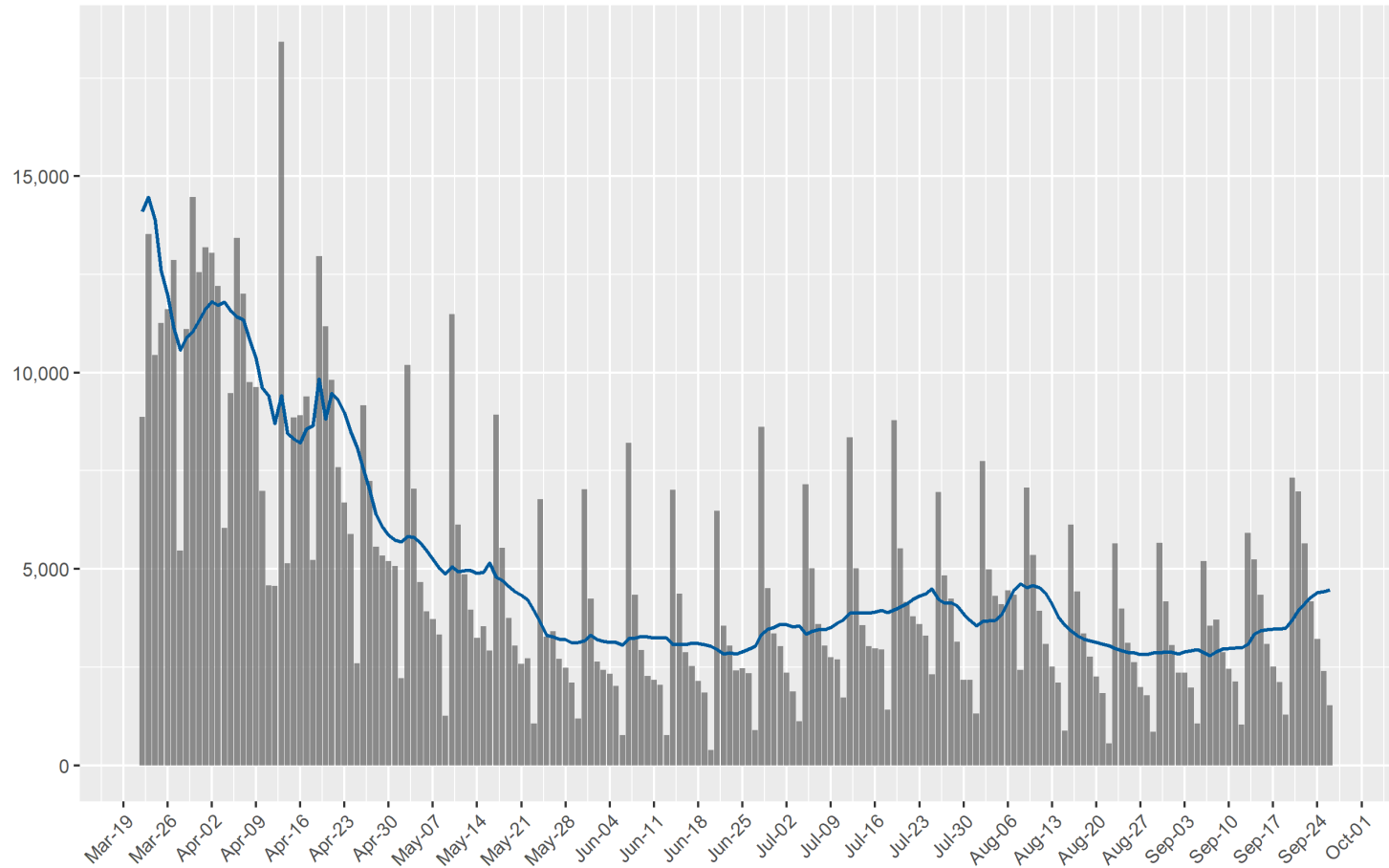
Claim Type	Sunday 9/13	Monday 9/14	Tuesday 9/15	Wednesday 9/16	Thursday 9/17	Friday 9/18	Saturday 9/19	Total
<b>Additional</b>	2,236	921	510	345	255	241	177	4,685
<b>Initial</b>	1,968	3,070	2,876	2,127	1,634	1,348	795	13,818
<b>Reopen</b>	1,716	1,250	958	615	619	525	317	6,000
<b>Total</b>	<b>5,920</b>	<b>5,241</b>	<b>4,344</b>	<b>3,087</b>	<b>2,508</b>	<b>2,114</b>	<b>1,289</b>	<b>24,503</b>

## Current Week

Claim Type	Sunday 9/20	Monday 9/21	Tuesday 9/22	Wednesday 9/23	Thursday 9/24	Friday 9/25	Saturday 9/26	Total
<b>Additional</b>	2,091	853	472	315	271	231	153	4,386
<b>Initial</b>	3,501	4,947	4,424	3,186	2,325	1,712	1,086	21,181
<b>Reopen</b>	1,736	1,176	751	667	625	451	287	5,693
<b>Total</b>	<b>7,328</b>	<b>6,976</b>	<b>5,647</b>	<b>4,168</b>	<b>3,221</b>	<b>2,394</b>	<b>1,526</b>	<b>31,260</b>

# UI Initial Claims Daily Series

Initial Claims for Unemployment Insurance  
daily filings since 3/22; line represents 7 day average



Source: DETR Internal Reporting

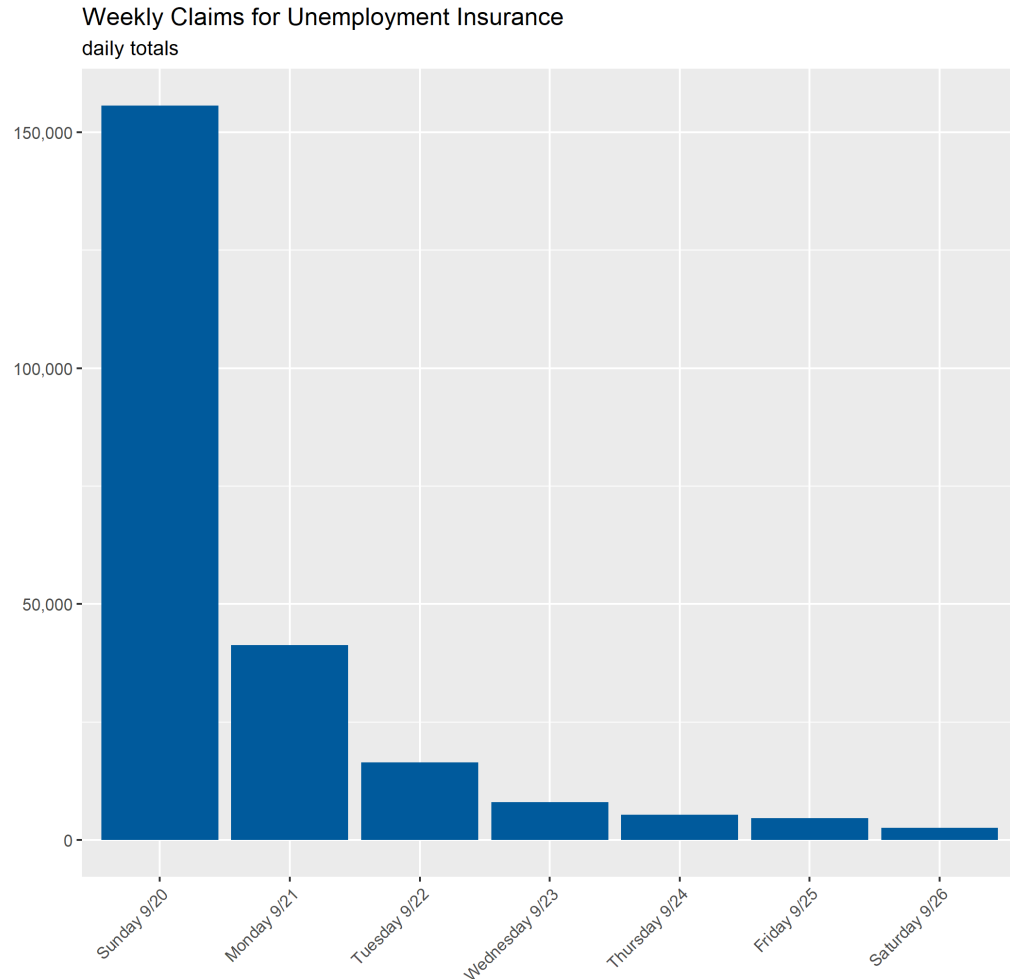


# UI Continued Claims by Day for Week Ending 9/26/2020

Continued claims by type and filing method for week ending 9/26/2020.

Sunday is the beginning of new claim week and when claimants *typically* file their weekly claim.

Daily data is unofficial and is unlikely to match federal reporting totals due to reporting differences.



Source: DETR Internal Reporting

## UI Continued Claims by Day for Week Ending 9/26/2020

Claim Type	Filing Method	Sunday 9/20	Monday 9/21	Tuesday 9/22	Wednesday 9/23	Thursday 9/24	Friday 9/25	Saturday 9/26	Total
<b>Claim Type &amp; Filing Method</b>									
<b>Weekly</b>	Internet	144,148	38,705	15,025	7,002	4,395	3,318	2,332	214,925
<b>Weekly</b>	Phone	11,490	2,637	1,375	1,055	984	1,291	208	19,040
<b>Filing Method</b>									
<b>Total</b>	Internet	144,148	38,705	15,025	7,002	4,395	3,318	2,332	214,925
<b>Total</b>	Phone	11,490	2,637	1,375	1,055	984	1,291	208	19,040
<b>Total</b>									
<b>Total</b>	<b>All</b>	<b>155,638</b>	<b>41,342</b>	<b>16,400</b>	<b>8,057</b>	<b>5,379</b>	<b>4,609</b>	<b>2,540</b>	<b>233,965</b>

## UI Continued Claims by Day Comparison

### Last Week

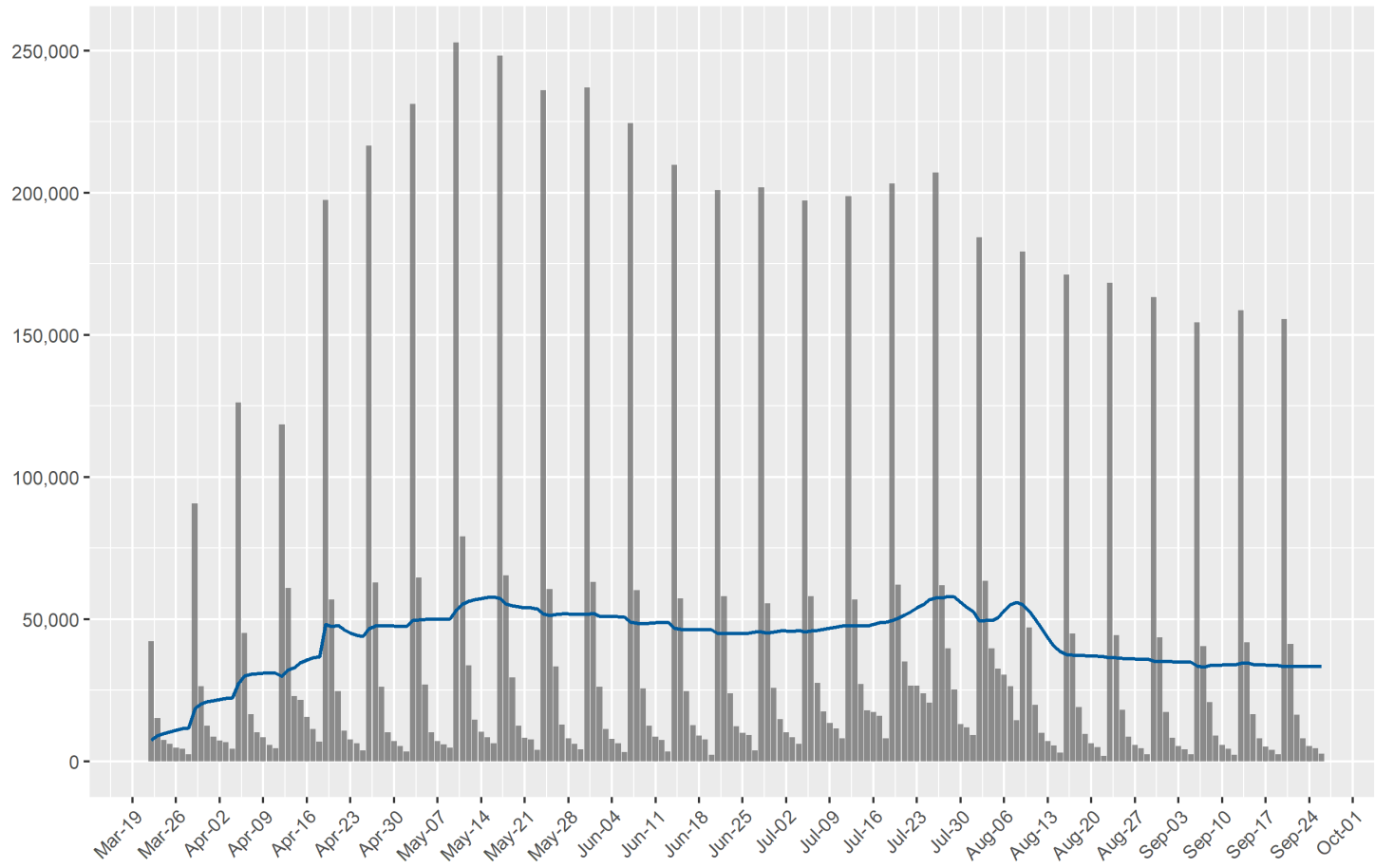
Claim Type	Sunday 9/13	Monday 9/14	Tuesday 9/15	Wednesday 9/16	Thursday 9/17	Friday 9/18	Saturday 9/19	Total
Weekly	158,565	41,883	16,482	8,014	5,191	3,966	2,464	236,565
Total	158,565	41,883	16,482	8,014	5,191	3,966	2,464	236,565

### Current Week

Claim Type	Sunday 9/20	Monday 9/21	Tuesday 9/22	Wednesday 9/23	Thursday 9/24	Friday 9/25	Saturday 9/26	Total
Weekly	155,638	41,342	16,400	8,057	5,379	4,609	2,540	233,965
Total	155,638	41,342	16,400	8,057	5,379	4,609	2,540	233,965

# UI Continued Claims Daily Series

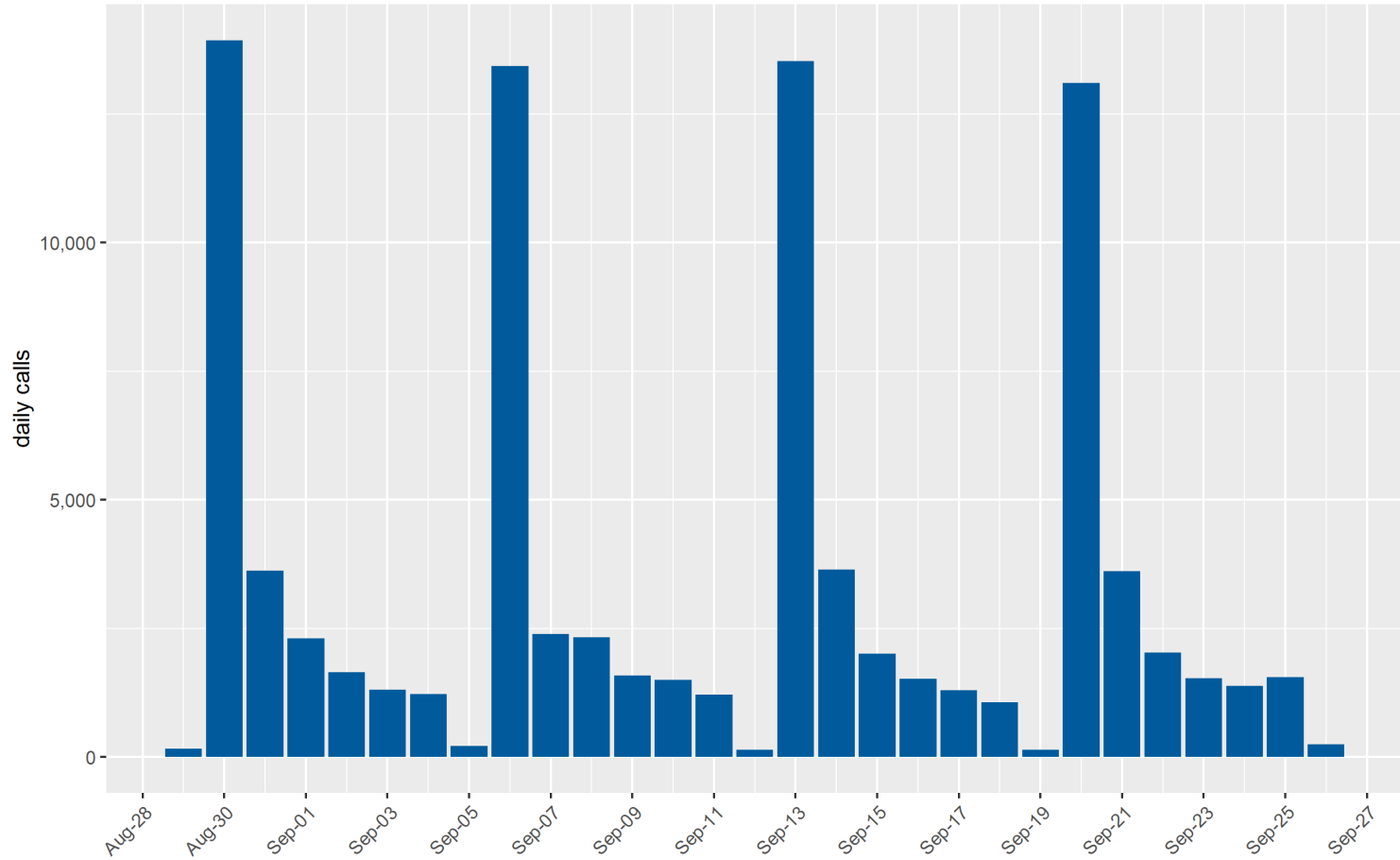
Continued Claims for Unemployment Insurance  
daily filings since 3/22; line represents 7 day average



Source: DETR Internal Reporting

# Daily Phone Call Volume (All Claim Types)

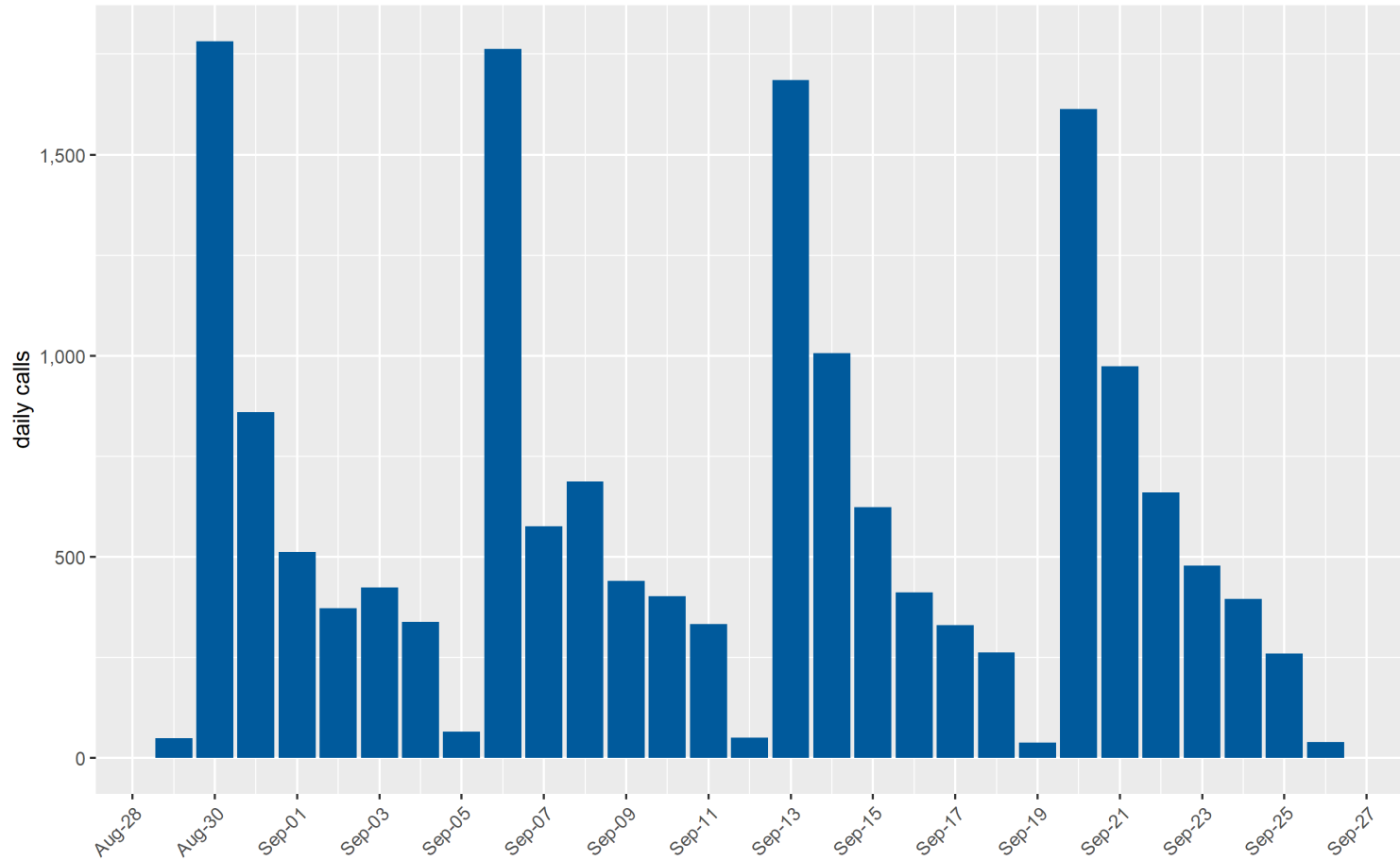
Claims by Day made via Phone  
includes all claim types



Source: DETR Internal Reporting

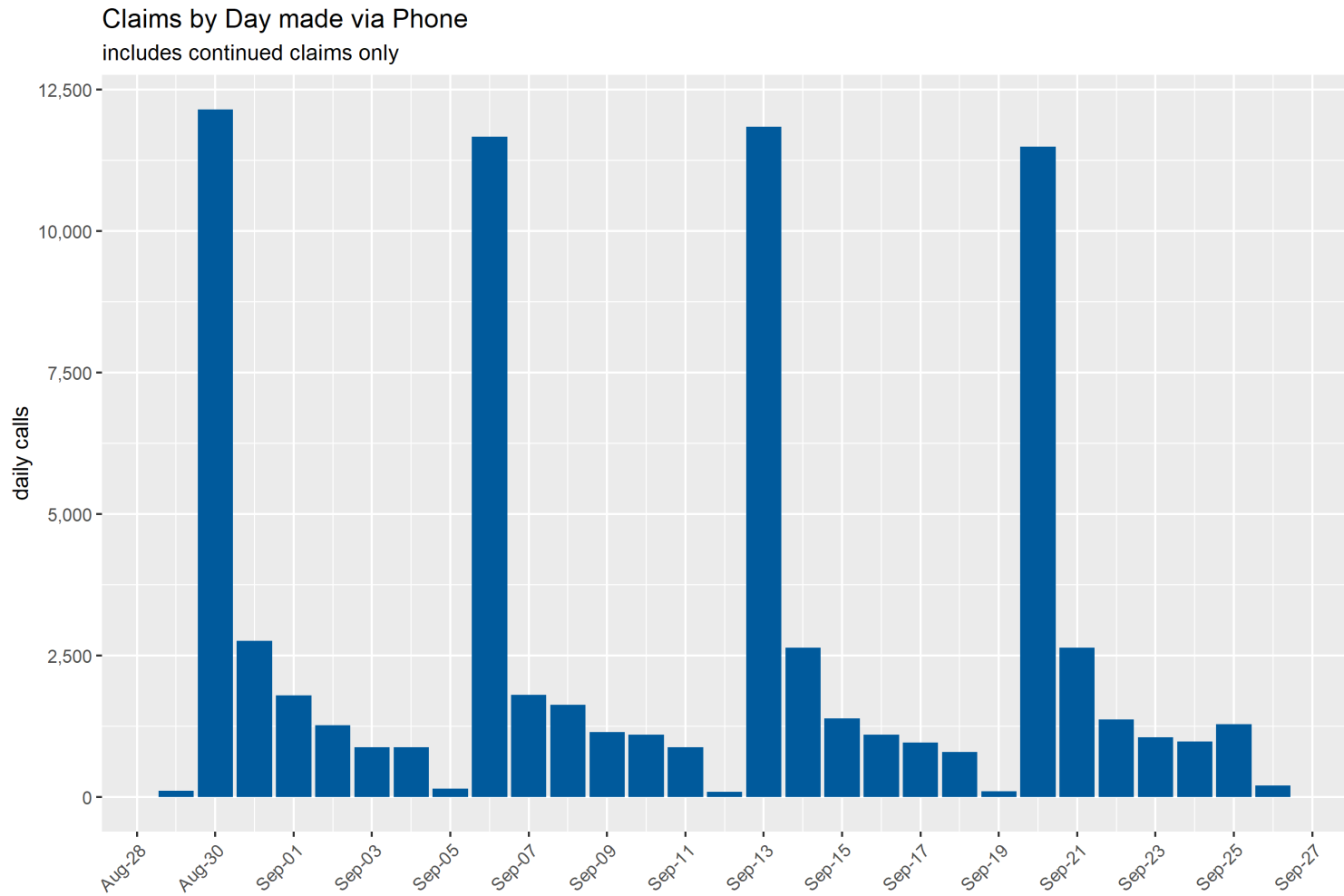
# Daily Phone Call Volume (Initial Claims)

Claims by Day made via Phone  
includes all initial claim types



Source: DETR Internal Reporting

# Daily Phone Call Volume (Continued Claims)



Source: DETR Internal Reporting

# UI Weekly Statistics (Regular UC)

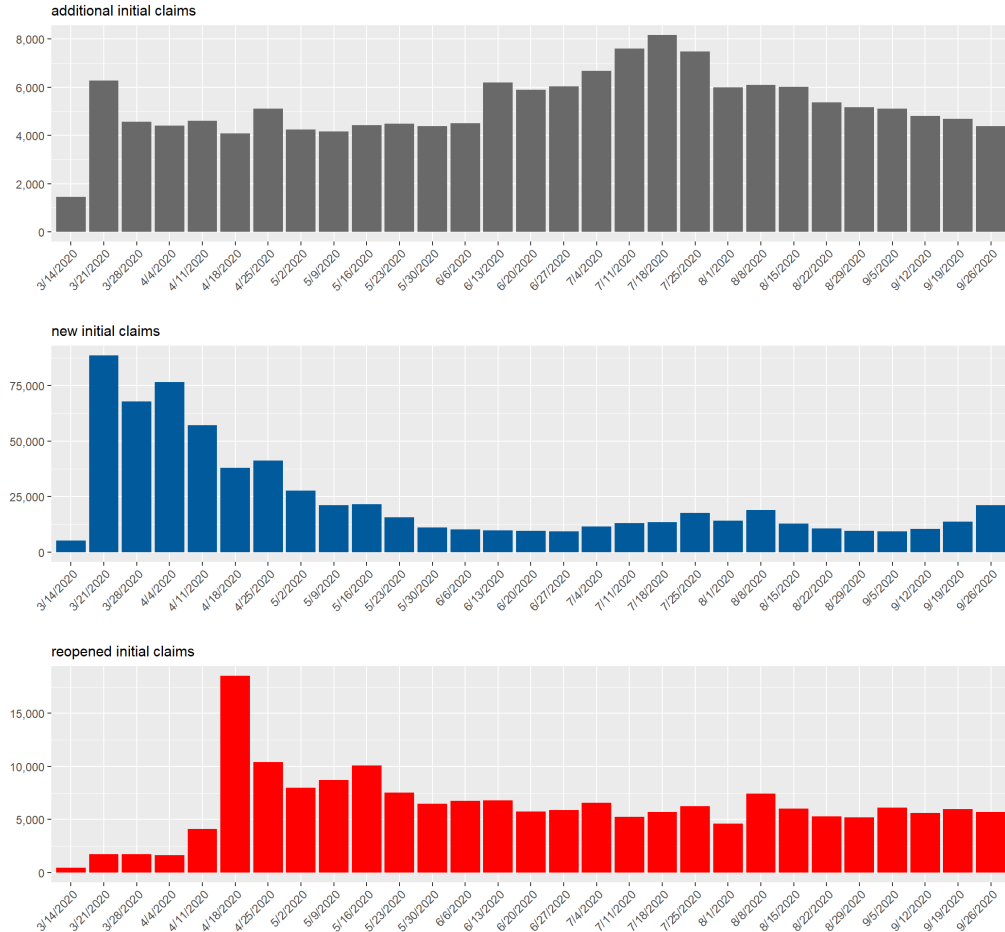


# UI Initial Claims by Week

Initial claims totals by type for week ending 9/26/2020.

Weekly data is unofficial and is unlikely to match federal reporting totals due to reporting differences.

Initial Claims for Unemployment Insurance by week ending



Source: DETR Internal Reporting

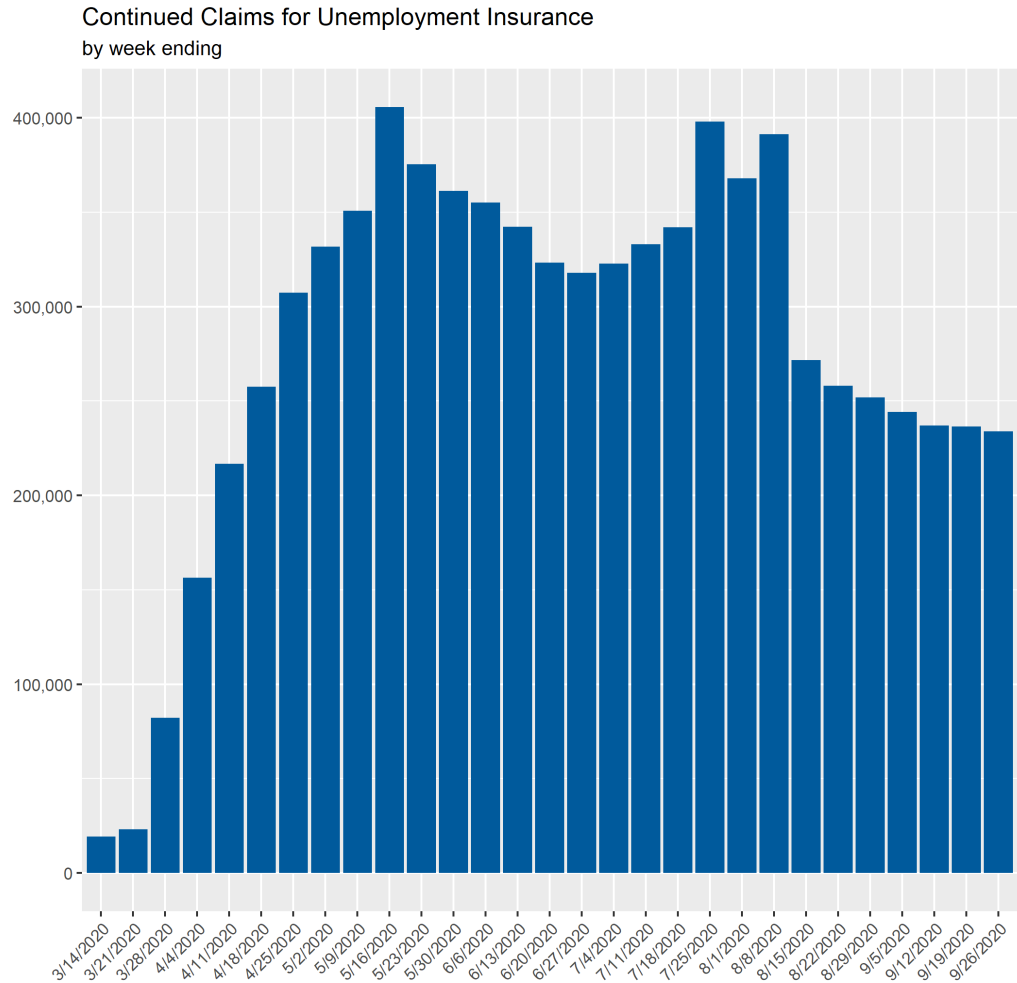
## UI Initial Claims by Week

Claim Type	Filing Method	2020-08-01	2020-08-08	2020-08-15	2020-08-22	2020-08-29	2020-09-05	2020-09-12	2020-09-19	2020-09-26
<b>Claim Type &amp; Filing Method</b>										
<b>Additional</b>	CSS	2,494	2,831	2,855	2,330	2,162	2,198	1,878	1,975	1,824
<b>Additional</b>	IVR	3,498	3,252	3,158	3,038	2,999	2,909	2,922	2,710	2,562
<b>Initial</b>	CSS	13,267	17,552	11,724	9,488	8,512	8,395	9,578	12,570	19,744
<b>Initial</b>	IVR	994	1,312	1,172	1,177	1,138	1,044	949	1,248	1,437
<b>Reopen</b>	CSS	3,995	6,838	5,454	4,853	4,785	5,716	5,233	5,601	5,271
<b>Reopen</b>	IVR	592	600	568	450	409	403	383	399	422
<b>Filing Method</b>										
<b>Total</b>	CSS	19,756	27,221	20,033	16,671	15,459	16,309	16,689	20,146	26,839
<b>Total</b>	IVR	5,084	5,164	4,898	4,665	4,546	4,356	4,254	4,357	4,421
<b>Total</b>										
<b>Total</b>	<b>All</b>	<b>24,840</b>	<b>32,385</b>	<b>24,931</b>	<b>21,336</b>	<b>20,005</b>	<b>20,665</b>	<b>20,943</b>	<b>24,503</b>	<b>31,260</b>

# UI Continued Claims by Week

Continued claims totals for week ending 9/26/2020.

Weekly data is unofficial and is unlikely to match federal reporting totals due to reporting differences.



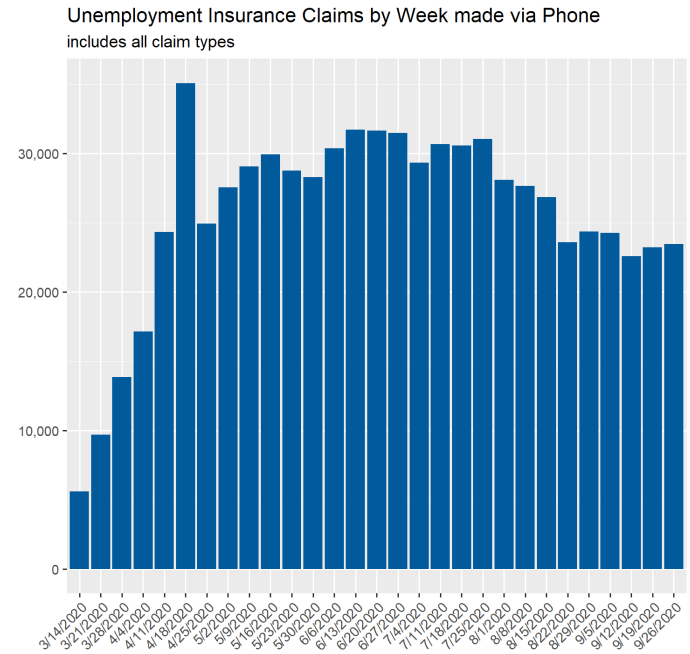
Source: DETR Internal Reporting

## UI Continued Claims by Week

Claim Type	Filing Method	2020-08-01	2020-08-08	2020-08-15	2020-08-22	2020-08-29	2020-09-05	2020-09-12	2020-09-19	2020-09-26
<b>Claim Type &amp; Filing Method</b>										
<b>Weekly</b>	CSS	344,986	368,878	249,723	239,042	232,178	224,299	218,604	217,715	214,925
<b>Weekly</b>	IVR	22,994	22,494	21,936	18,928	19,810	19,897	18,343	18,850	19,040
<b>Filing Method</b>										
<b>Total</b>	CSS	344,986	368,878	249,723	239,042	232,178	224,299	218,604	217,715	214,925
<b>Total</b>	IVR	22,994	22,494	21,936	18,928	19,810	19,897	18,343	18,850	19,040
<b>Total</b>										
<b>Total</b>	<b>All</b>	<b>367,980</b>	<b>391,372</b>	<b>271,659</b>	<b>257,970</b>	<b>251,988</b>	<b>244,196</b>	<b>236,947</b>	<b>236,565</b>	<b>233,965</b>

## Weekly Call Volume (All Claim Types)

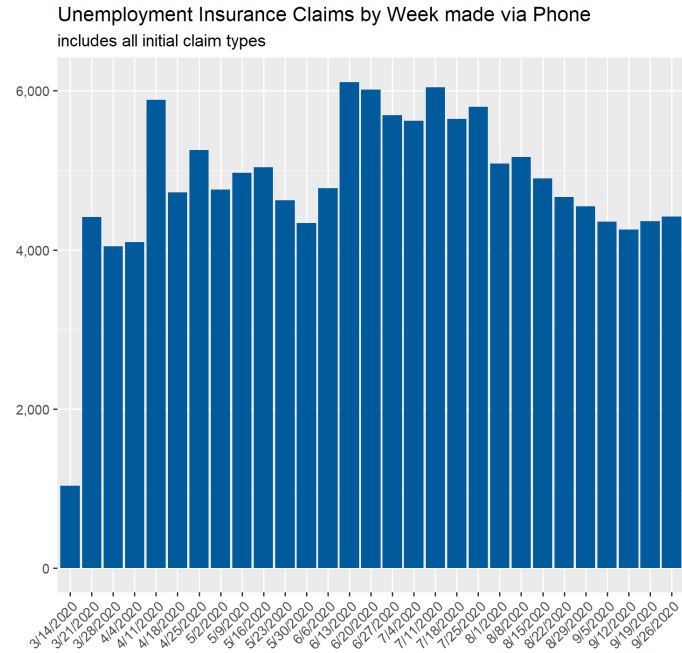
Week Ending	Total Phone Claims	+/- change	% change
7/4/2020	29,316	-2,151	-6.84%
7/11/2020	30,670	1,354	4.62%
7/18/2020	30,578	-92	-0.30%
7/25/2020	31,053	475	1.55%
8/1/2020	28,078	-2,975	-9.58%
8/8/2020	27,658	-420	-1.50%
8/15/2020	26,834	-824	-2.98%
8/22/2020	23,593	-3,241	-12.08%
8/29/2020	24,356	763	3.23%
9/5/2020	24,253	-103	-0.42%
9/12/2020	22,597	-1,656	-6.83%
9/19/2020	23,207	610	2.70%
9/26/2020	23,461	254	1.09%



Source: DETR Internal Reporting

# Weekly Call Volume (Initial Claims)

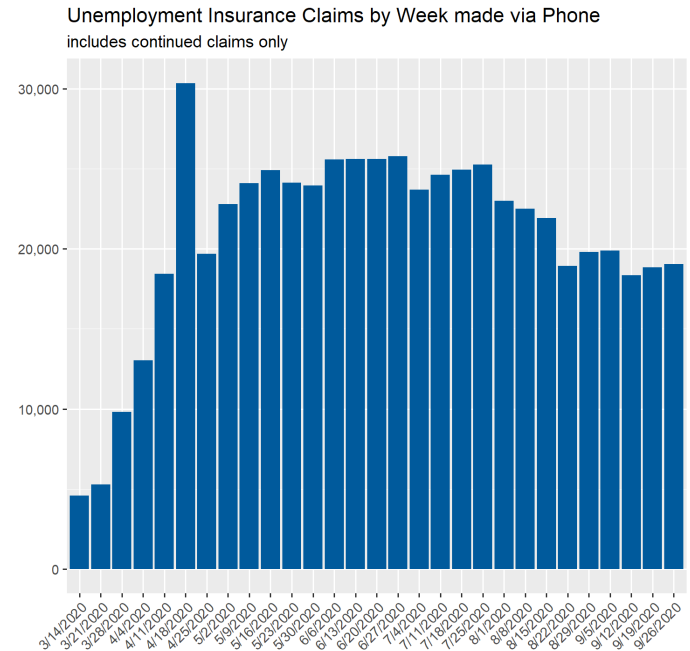
Week Ending	Total Phone Claims	+/- change	% change
7/4/2020	5,623	-72	-1.26%
7/11/2020	6,044	421	7.49%
7/18/2020	5,645	-399	-6.60%
7/25/2020	5,797	152	2.69%
8/1/2020	5,084	-713	-12.30%
8/8/2020	5,164	80	1.57%
8/15/2020	4,898	-266	-5.15%
8/22/2020	4,665	-233	-4.76%
8/29/2020	4,546	-119	-2.55%
9/5/2020	4,356	-190	-4.18%
9/12/2020	4,254	-102	-2.34%
9/19/2020	4,357	103	2.42%
9/26/2020	4,421	64	1.47%



Source: DETR Internal Reporting

## Weekly Call Volume (Continued Claims)

Week Ending	Total Phone Claims	+/- change	% change
7/4/2020	23,693	-2,079	-8.07%
7/11/2020	24,626	933	3.94%
7/18/2020	24,933	307	1.25%
7/25/2020	25,256	323	1.30%
8/1/2020	22,994	-2,262	-8.96%
8/8/2020	22,494	-500	-2.17%
8/15/2020	21,936	-558	-2.48%
8/22/2020	18,928	-3,008	-13.71%
8/29/2020	19,810	882	4.66%
9/5/2020	19,897	87	0.44%
9/12/2020	18,343	-1,554	-7.81%
9/19/2020	18,850	507	2.76%
9/26/2020	19,040	190	1.01%



Source: DETR Internal Reporting

# UI Claims Activity by County (Regular UC)



## UI Daily Initial Claims by County for Week Ending 9/26/2020

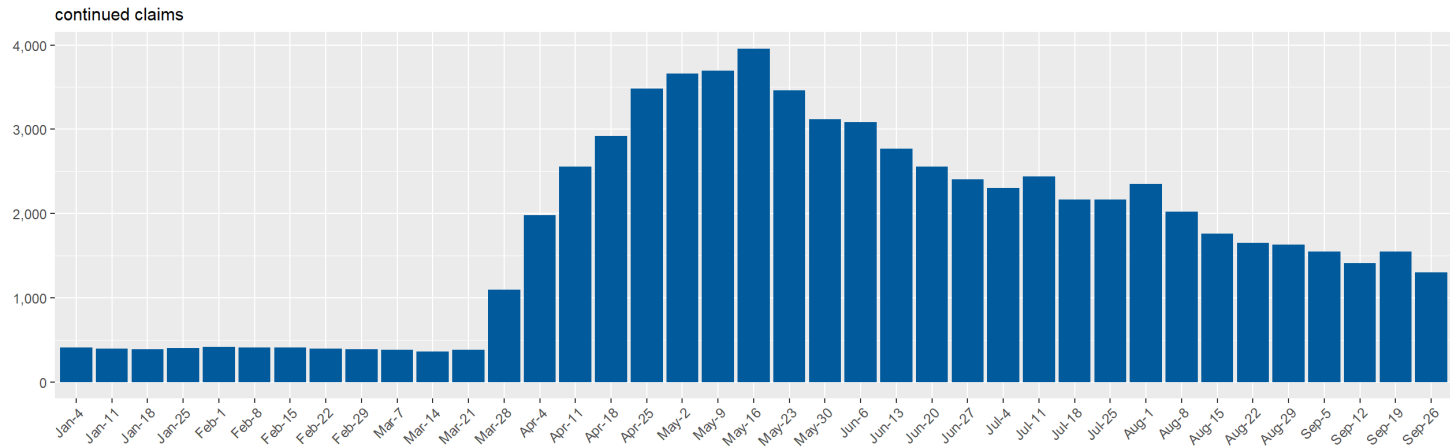
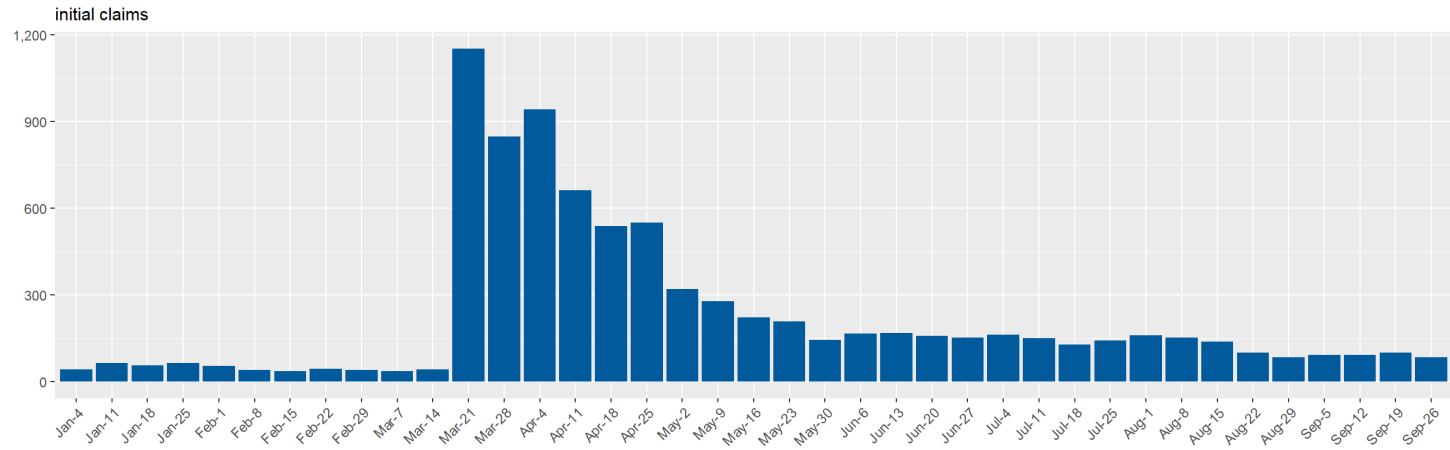
County	2020-09-20	2020-09-21	2020-09-22	2020-09-23	2020-09-24	2020-09-25	2020-09-26	Total
Carson City	23	35	26	20	14	12	6	136
Churchill	4	10	10	4	4	5	1	38
Clark	3,056	3,798	3,367	2,347	1,632	1,173	683	16,056
Douglas	11	15	17	9	9	13	2	76
Elko	10	15	10	6	10	8	4	63
Esmeralda	2	1	1	0	1	0	1	6
Eureka	1	0	1	0	1	0	0	3
Humboldt	4	6	9	2	3	3	0	27
Lander	1	2	2	2	1	1	1	10
Lincoln	0	0	0	1	0	1	0	2
Lyon	22	27	16	12	11	14	3	105
Mineral	0	2	0	0	1	1	0	4
Nye	21	28	18	19	14	7	6	113
OOS	371	494	426	452	334	356	287	2,720
Pershing	1	3	1	0	0	0	0	5
Storey	1	0	0	1	1	0	1	4
Washoe	133	240	201	132	114	98	48	966
White Pine	1	2	2	4	3	1	0	13

## UI Daily Continued Claims by County for Week Ending 9/26/2020

County	2020-09-20	2020-09-21	2020-09-22	2020-09-23	2020-09-24	2020-09-25	2020-09-26	Total
Carson City	882	299	124	44	49	39	18	1,455
Churchill	198	116	24	28	9	11	19	405
Clark	105,187	28,128	11,511	5,576	3,569	3,356	1,716	159,043
Douglas	632	218	91	40	32	28	26	1,067
Elko	442	167	74	46	24	11	9	773
Esmeralda	11	2	1	1	0	0	0	15
Eureka	8	3	0	0	0	0	0	11
Humboldt	141	54	13	11	6	4	5	234
Lander	59	19	7	8	1	0	2	96
Lincoln	24	11	3	5	0	0	2	45
Lyon	756	247	83	42	36	31	14	1,209
Mineral	43	10	3	0	0	1	2	59
Nye	800	208	103	38	12	18	10	1,189
OOS	8,552	3,758	1,454	960	784	529	345	16,382
Pershing	19	10	3	3	0	0	2	37
Storey	22	7	3	1	1	2	1	37
Washoe	7,690	2,891	1,318	637	455	316	195	13,502
White Pine	58	17	8	5	0	2	1	91

# UI Claims for Carson City

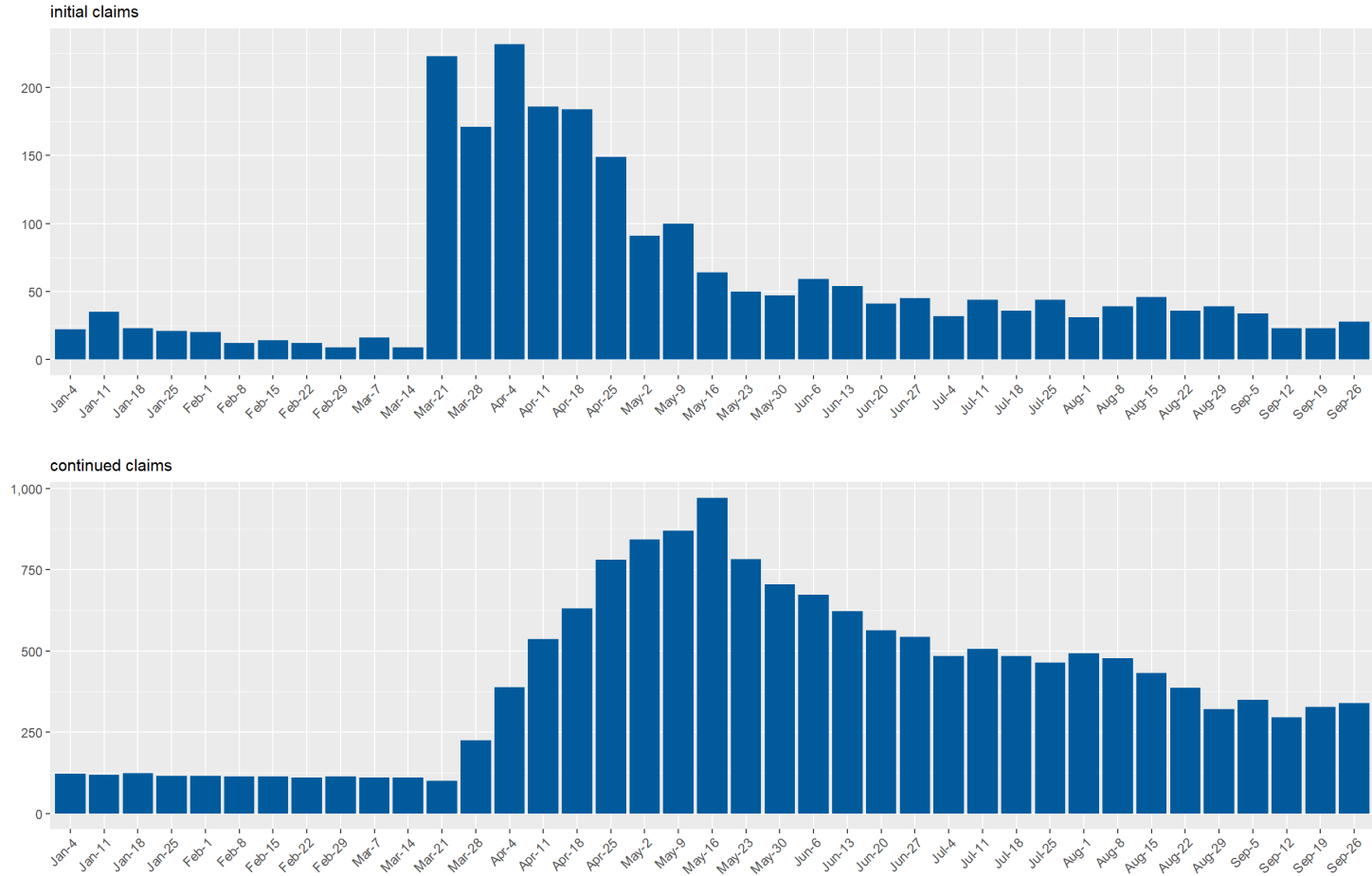
Carson City Unemployment Insurance Claims by Week since January 2020



Source: DETR Internal Reporting

# UI Claims for Churchill County

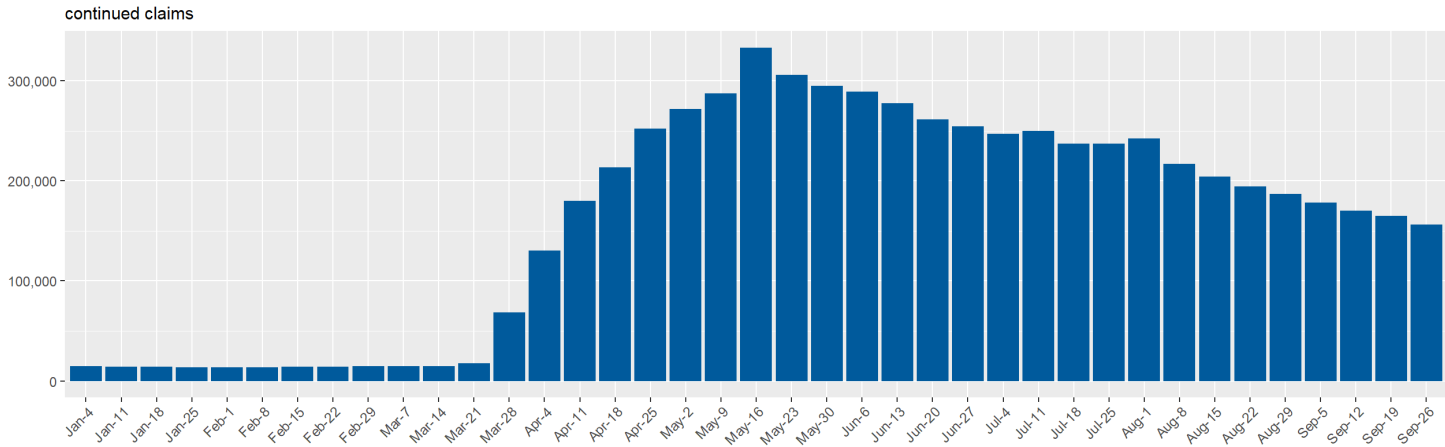
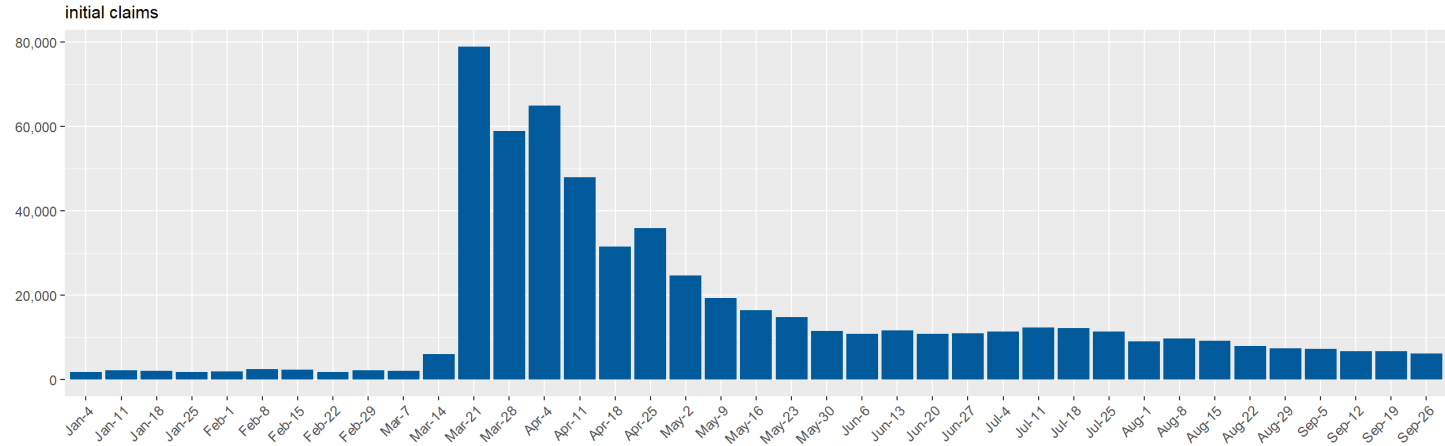
Churchill County Unemployment Insurance Claims by Week since January 2020



Source: DETR Internal Reporting

# UI Claims for Clark County

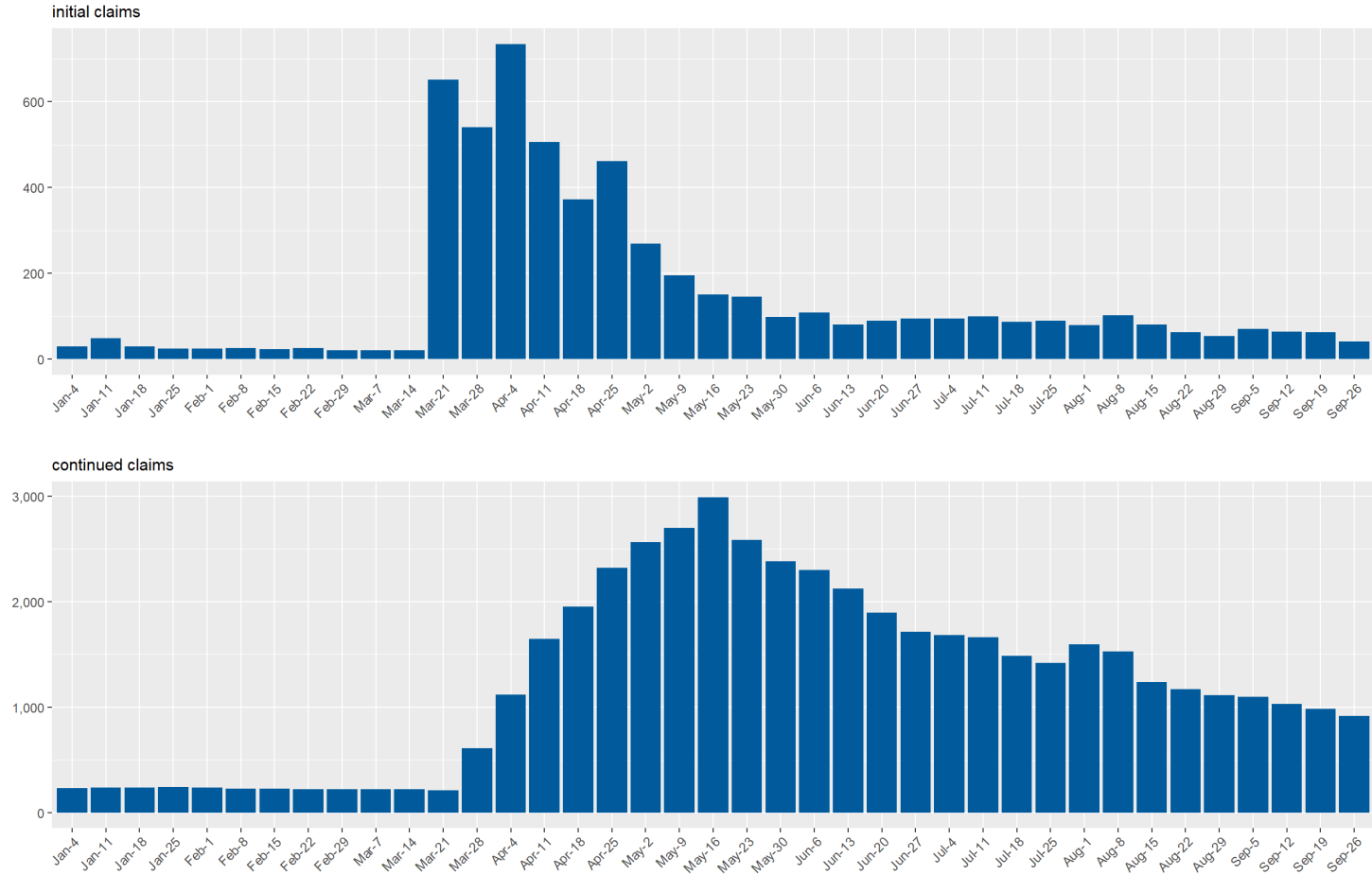
Clark County Unemployment Insurance Claims by Week since January 2020



Source: DETR Internal Reporting

# UI Claims for Douglas County

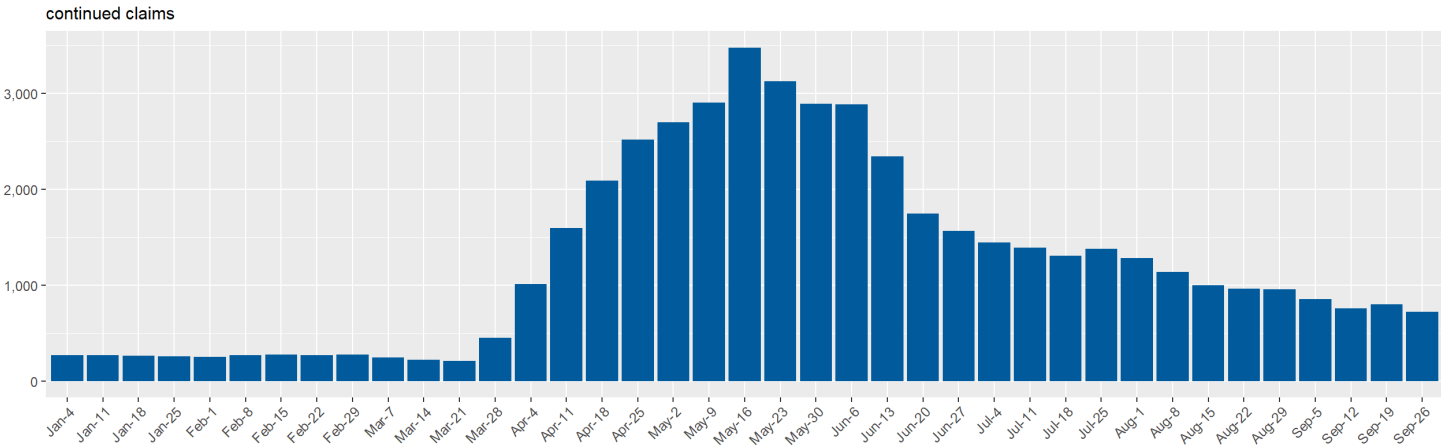
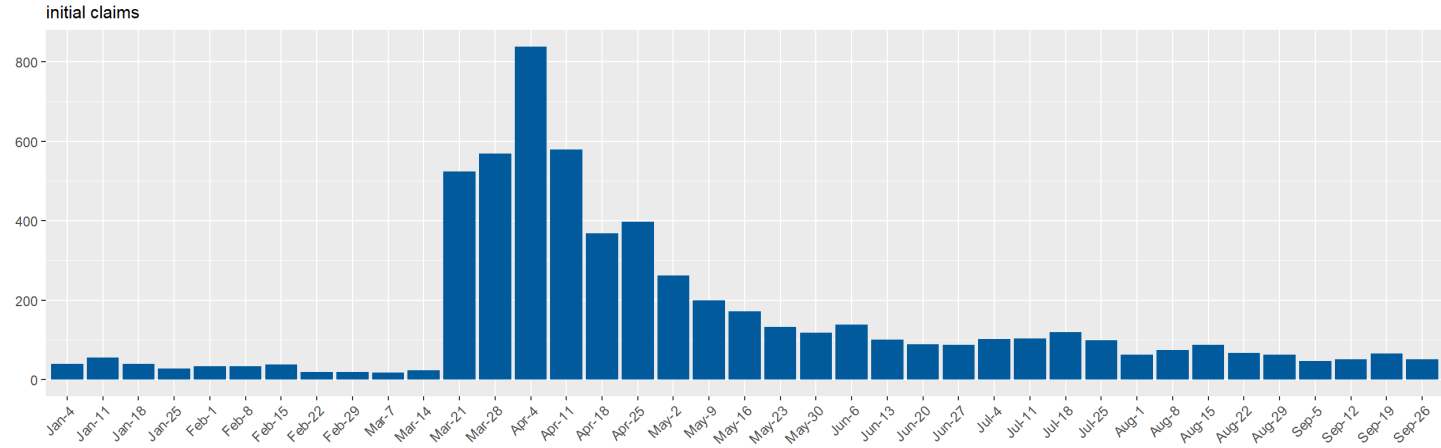
Douglas County Unemployment Insurance Claims by Week since January 2020



Source: DETR Internal Reporting

# UI Claims for Elko County

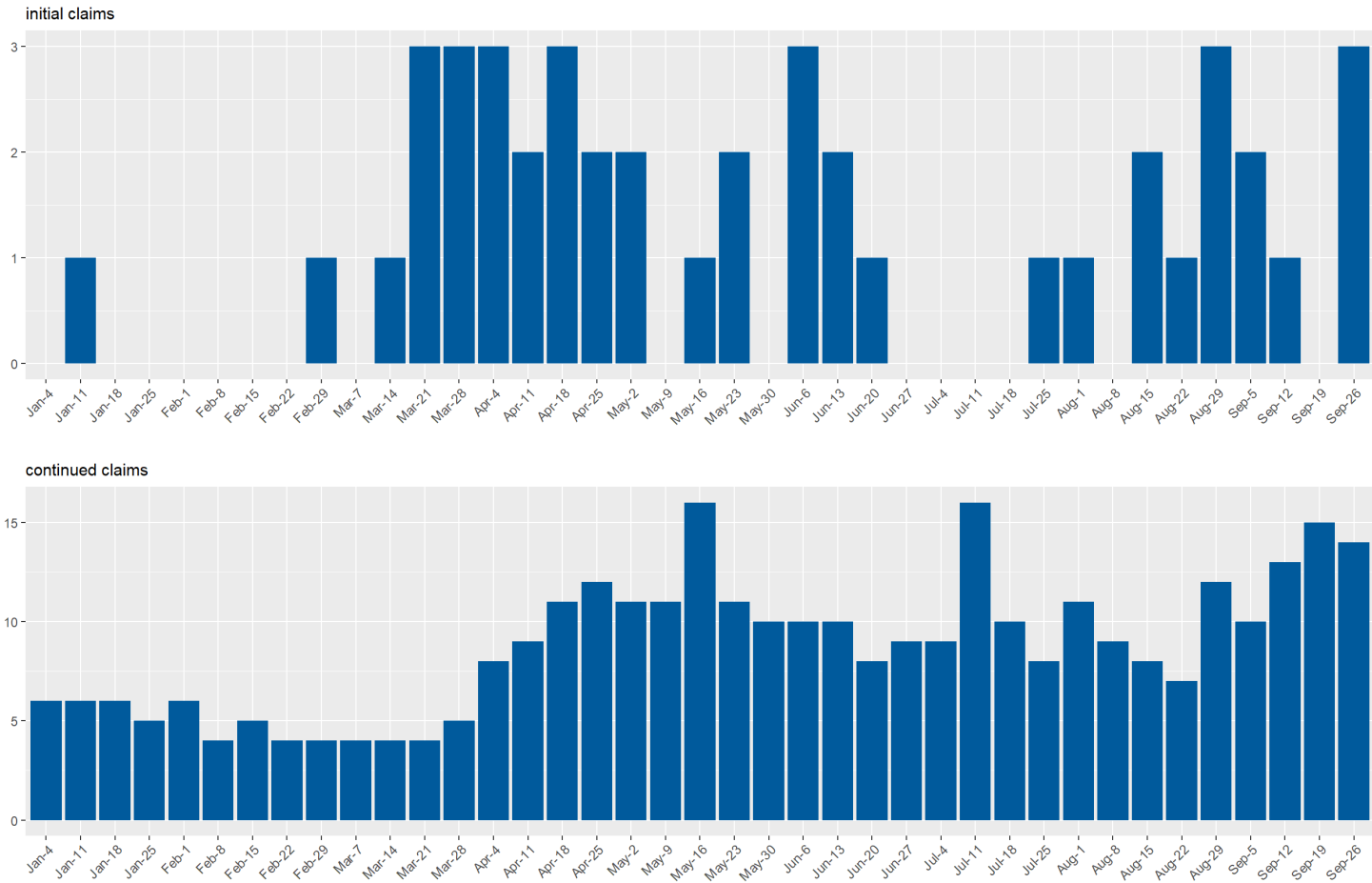
Elko County Unemployment Insurance Claims by Week since January 2020



Source: DETR Internal Reporting

# UI Claims for Esmeralda County

Esmeralda County Unemployment Insurance Claims by Week since January 2020

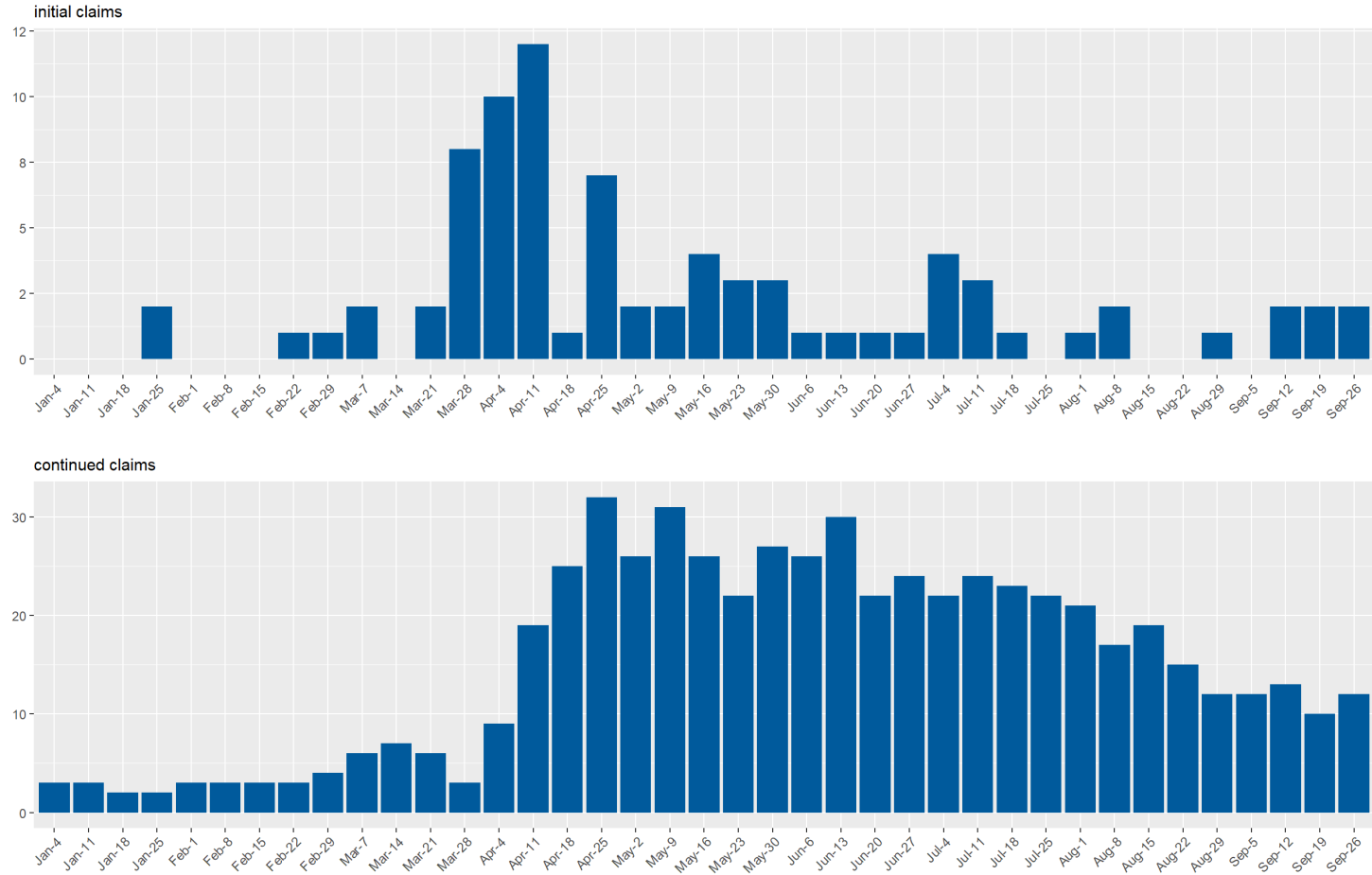


Source: DETR Internal Reporting



# UI Claims for Eureka County

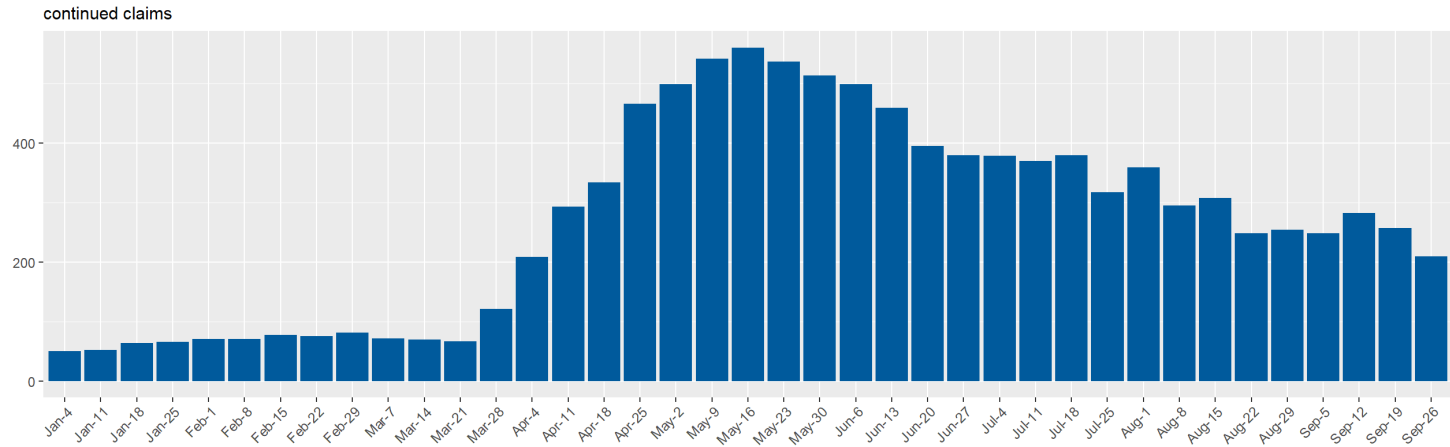
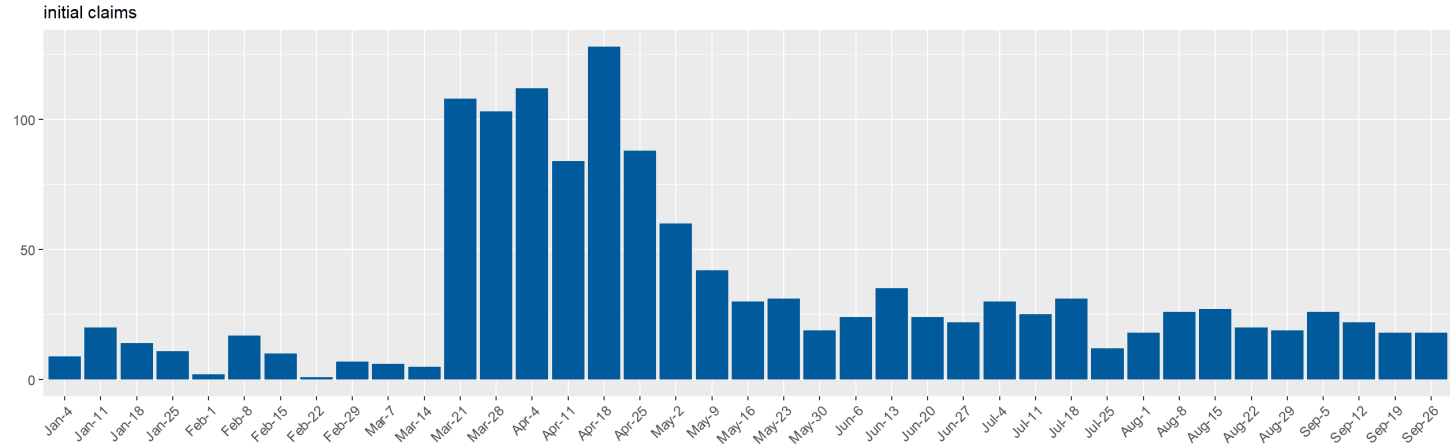
Eureka County Unemployment Insurance Claims by Week since January 2020



Source: DETR Internal Reporting

# UI Claims for Humboldt County

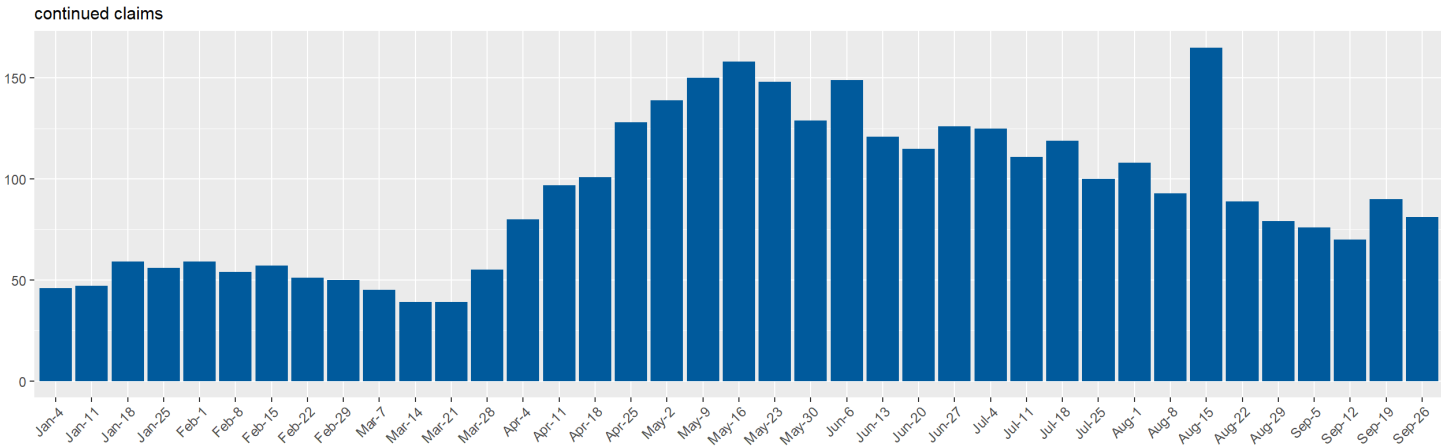
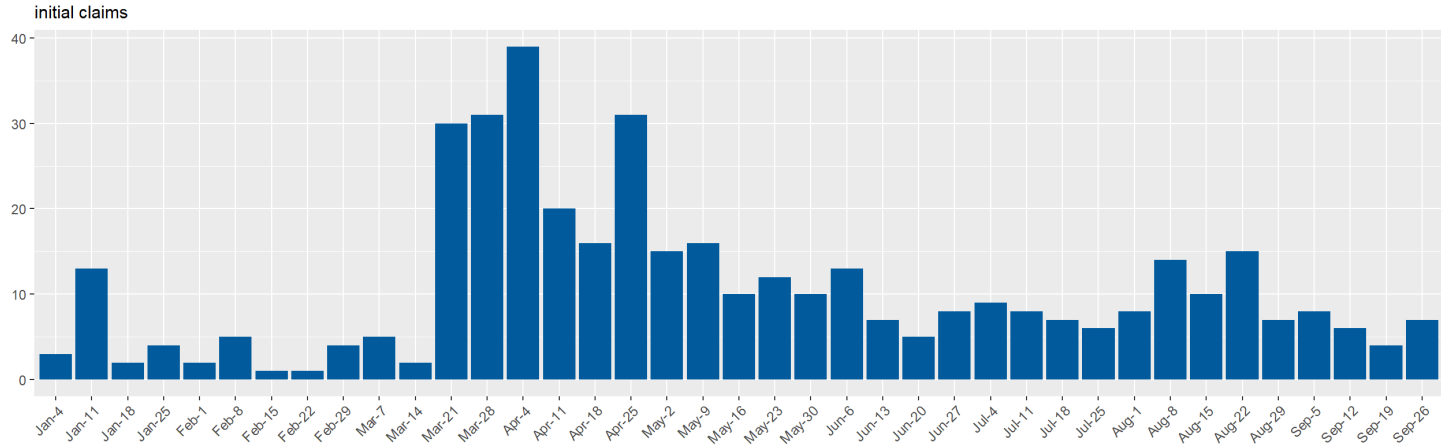
Humboldt County Unemployment Insurance Claims by Week since January 2020



Source: DETR Internal Reporting

# UI Claims for Lander County

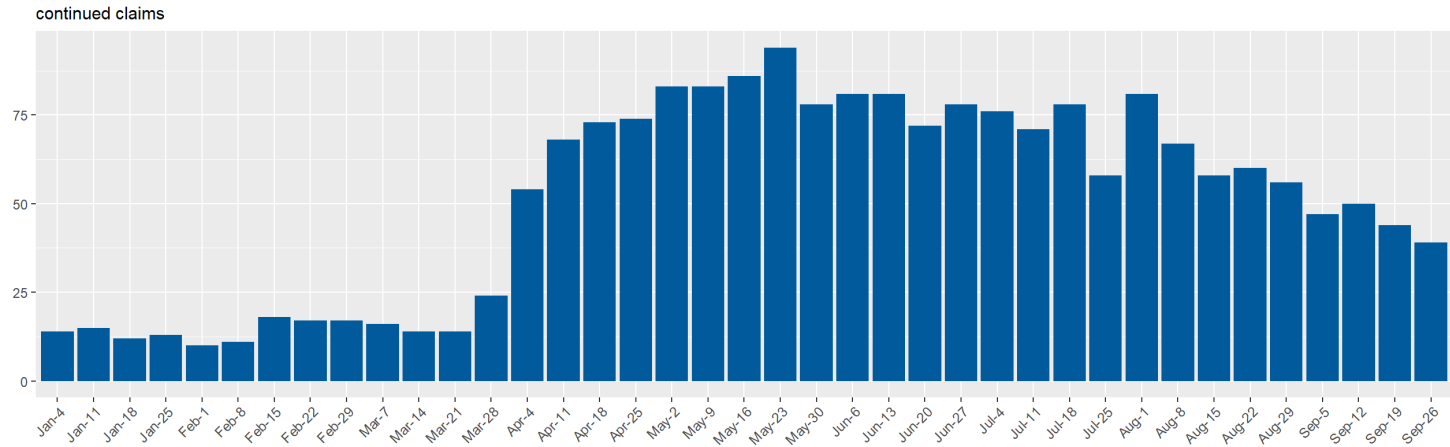
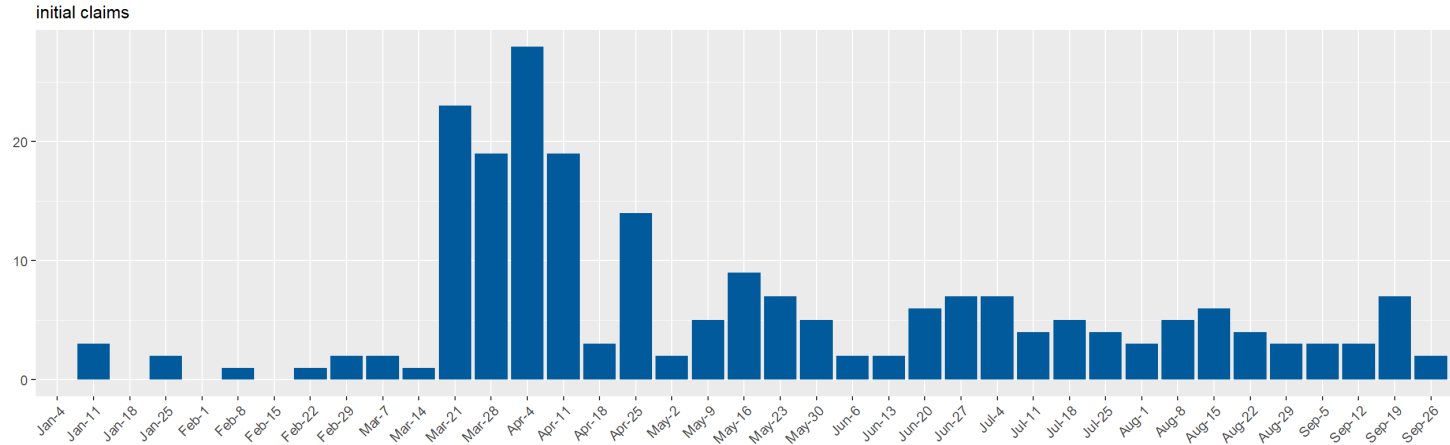
Lander County Unemployment Insurance Claims by Week since January 2020



Source: DETR Internal Reporting

# UI Claims for Lincoln County

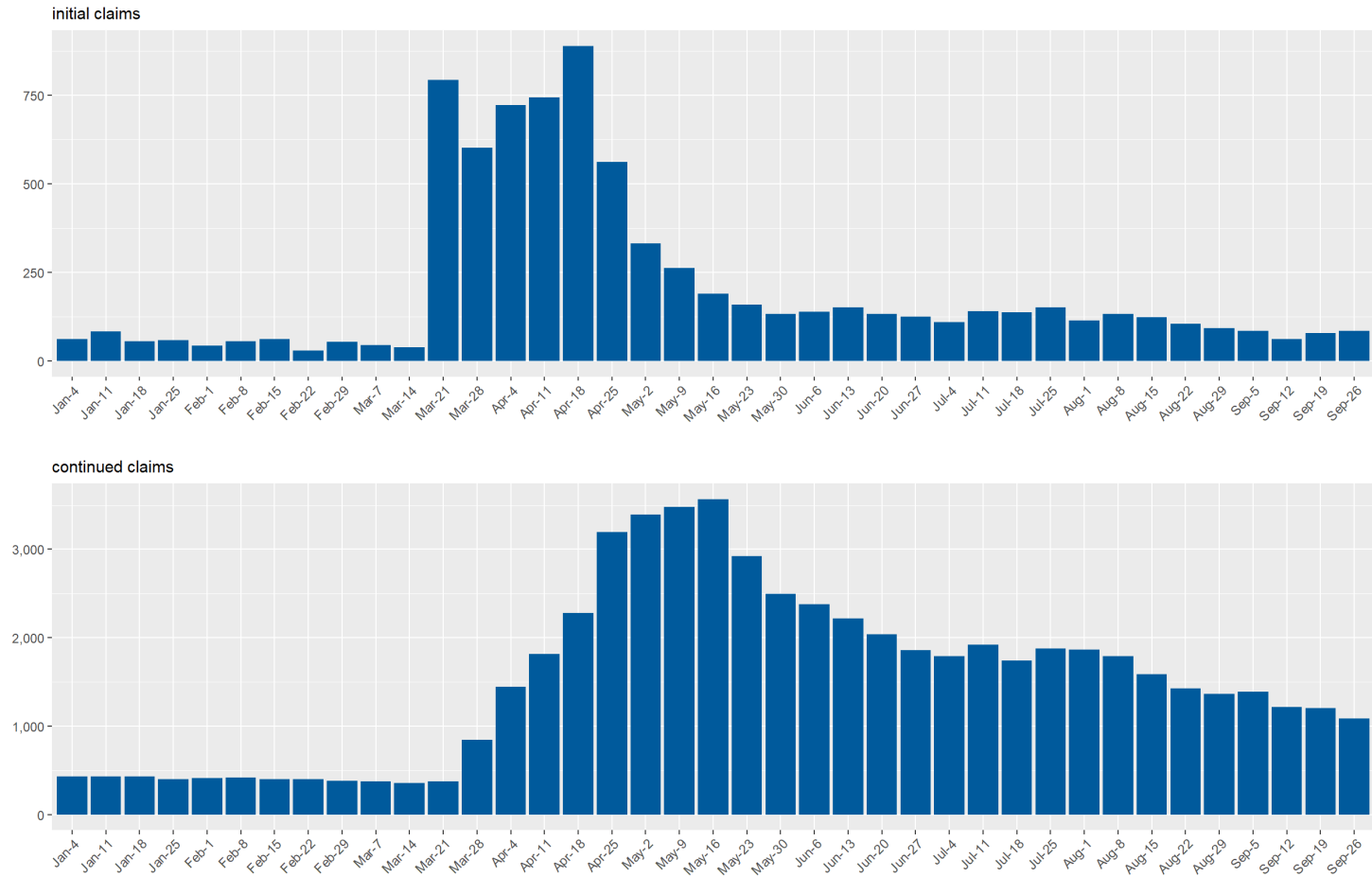
Lincoln County Unemployment Insurance Claims by Week since January 2020



Source: DETR Internal Reporting

# UI Claims for Lyon County

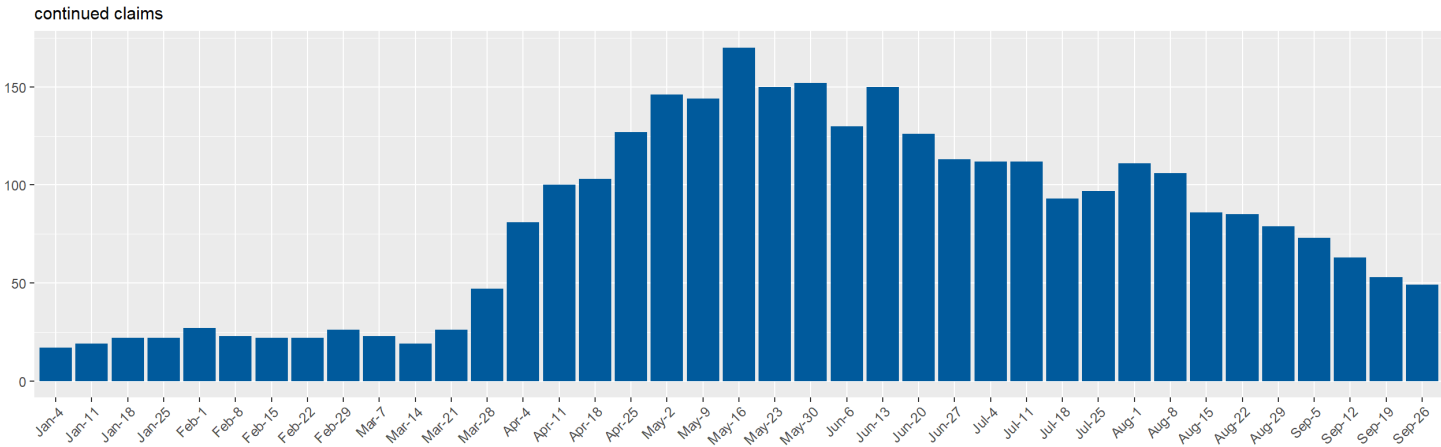
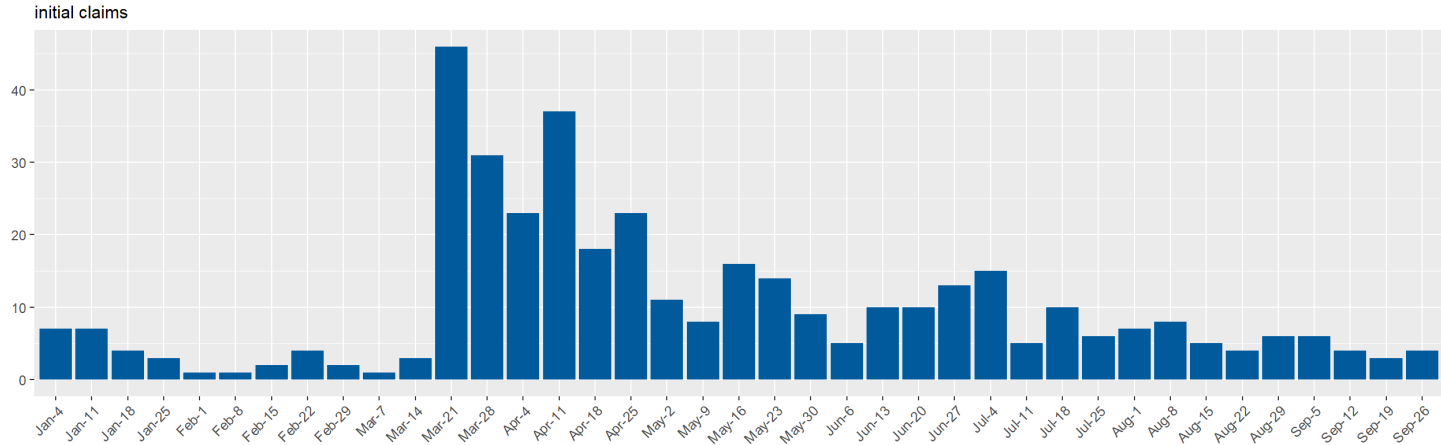
Lyon County Unemployment Insurance Claims by Week since January 2020



Source: DETR Internal Reporting

# UI Claims for Mineral County

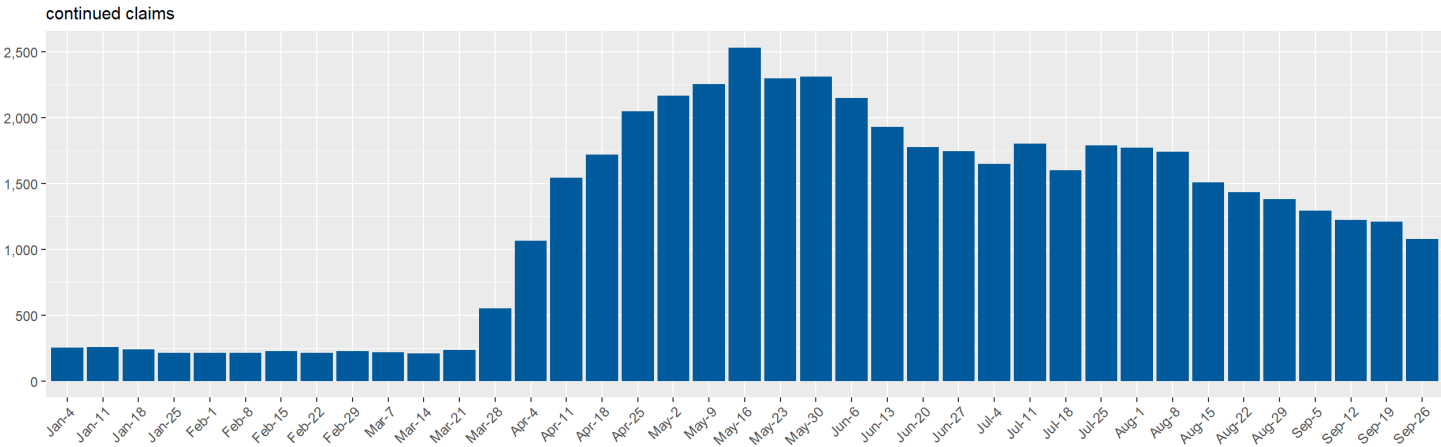
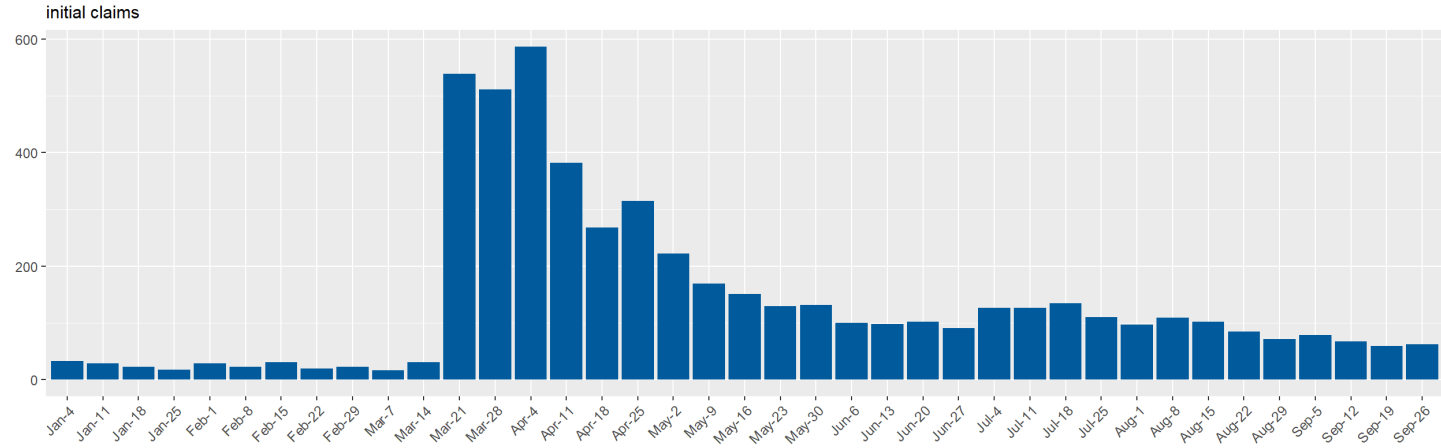
Mineral County Unemployment Insurance Claims by Week since January 2020



Source: DETR Internal Reporting

# UI Claims for Nye County

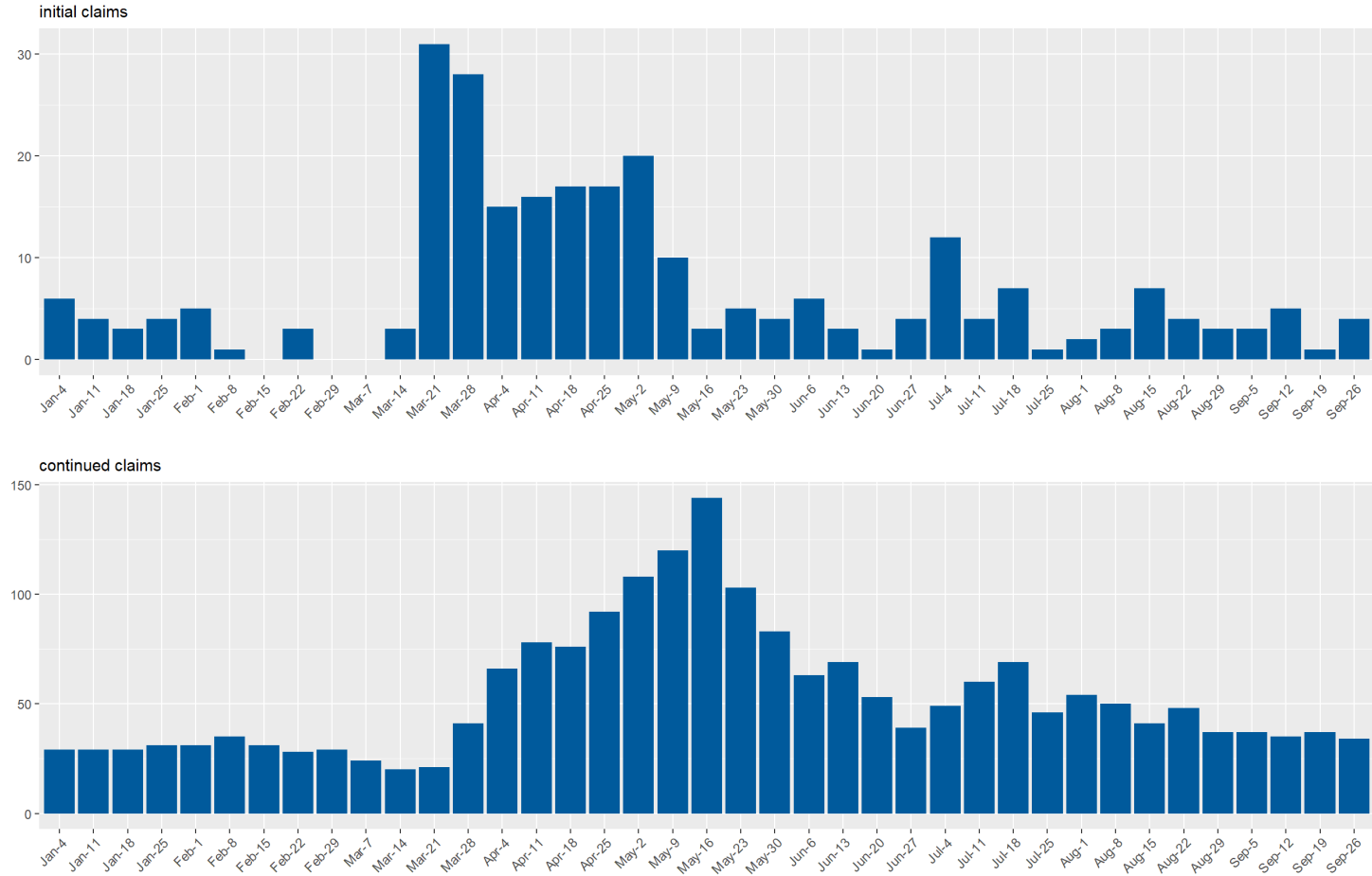
Nye County Unemployment Insurance Claims by Week since January 2020



Source: DETR Internal Reporting

# UI Claims for Pershing County

Pershing County Unemployment Insurance Claims by Week since January 2020

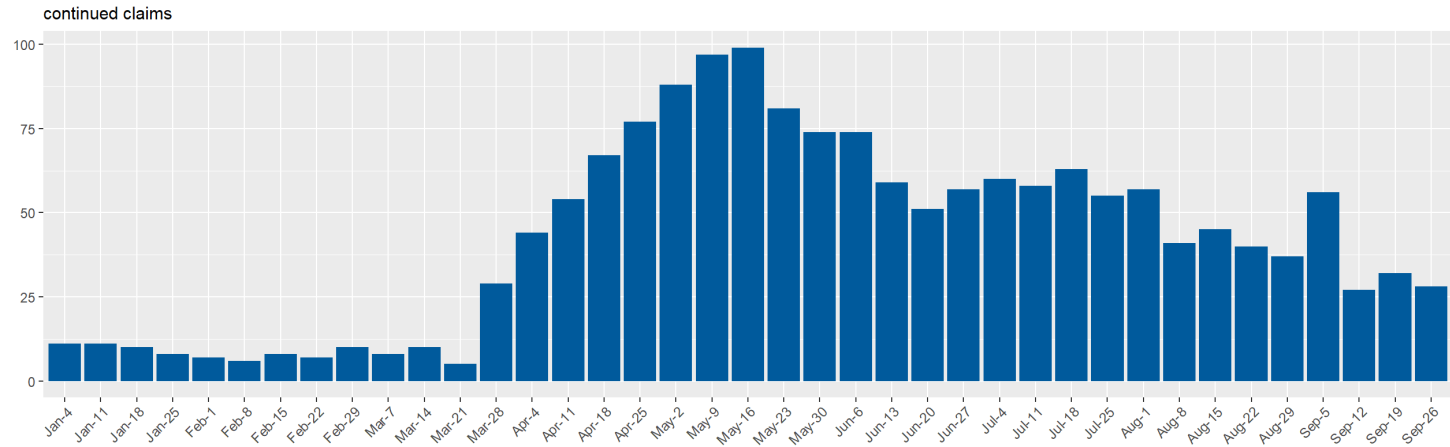
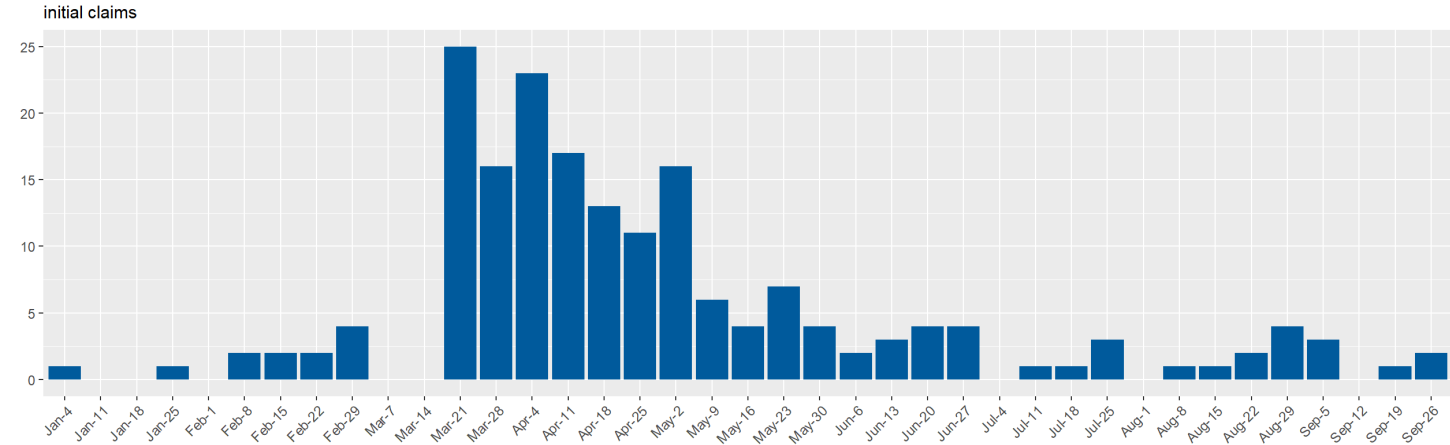


Source: DETR Internal Reporting



# UI Claims for Storey County

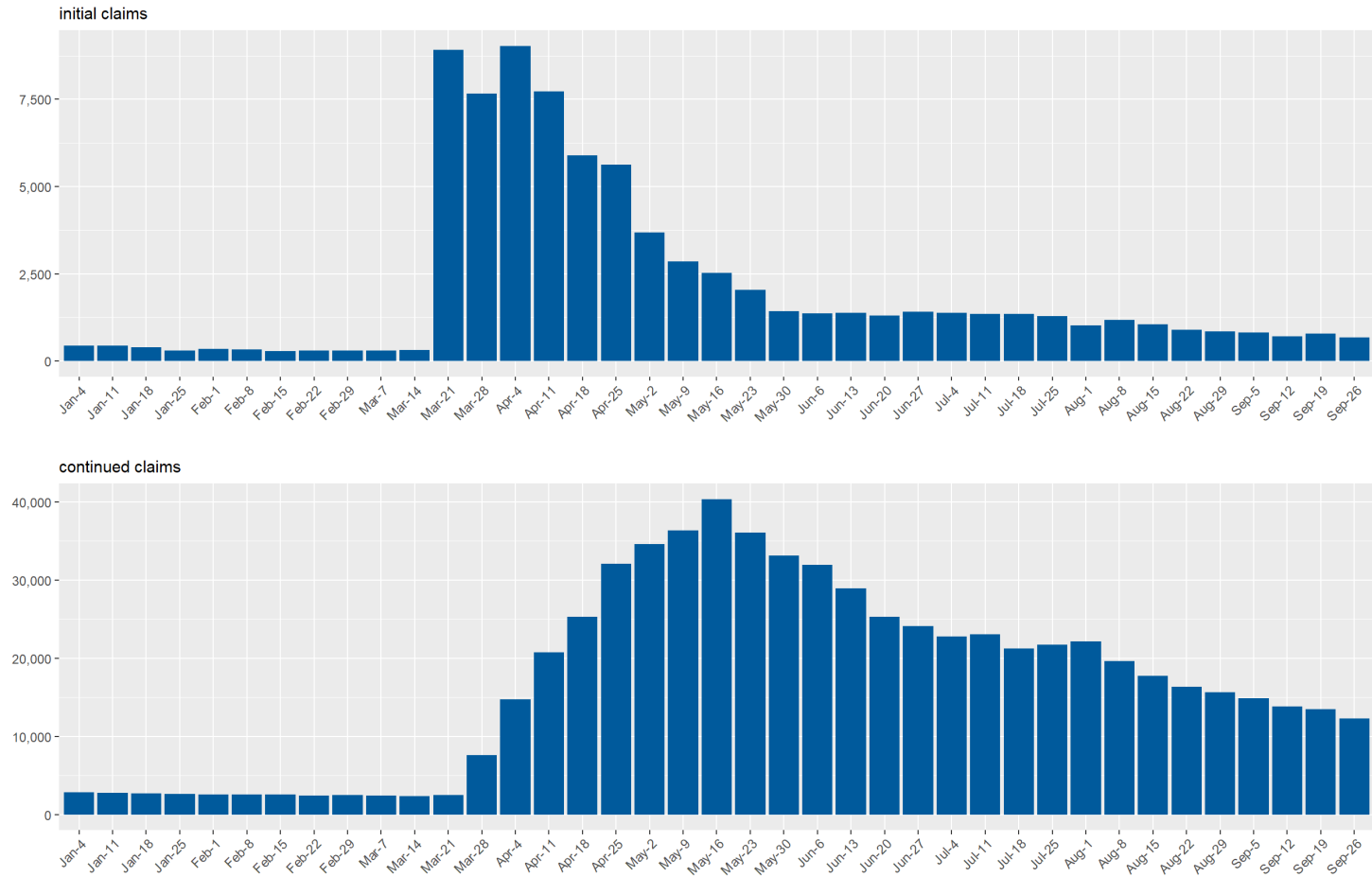
Storey County Unemployment Insurance Claims by Week since January 2020



Source: DETR Internal Reporting

# UI Claims for Washoe County

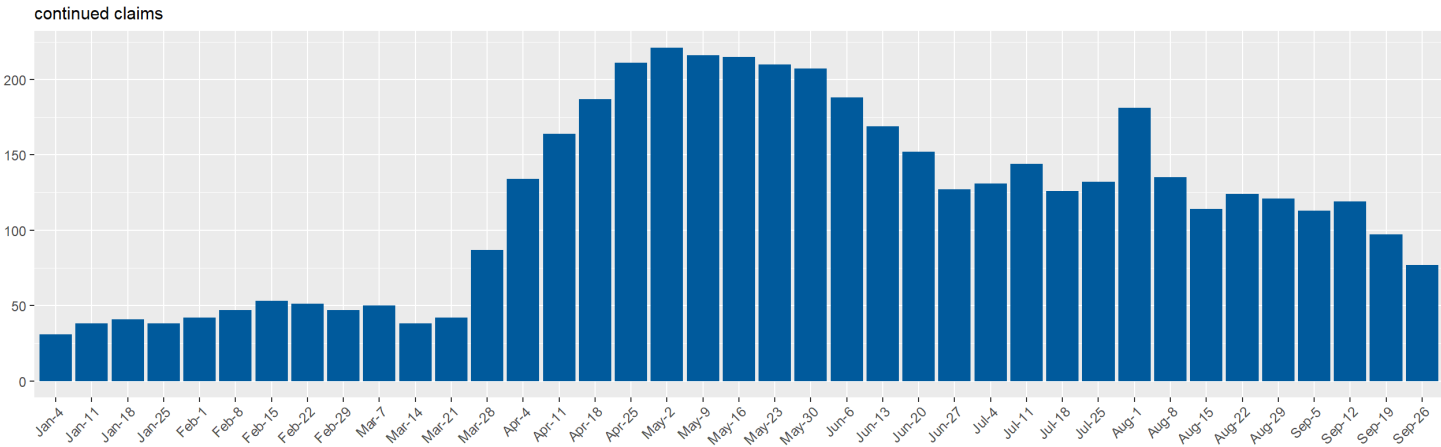
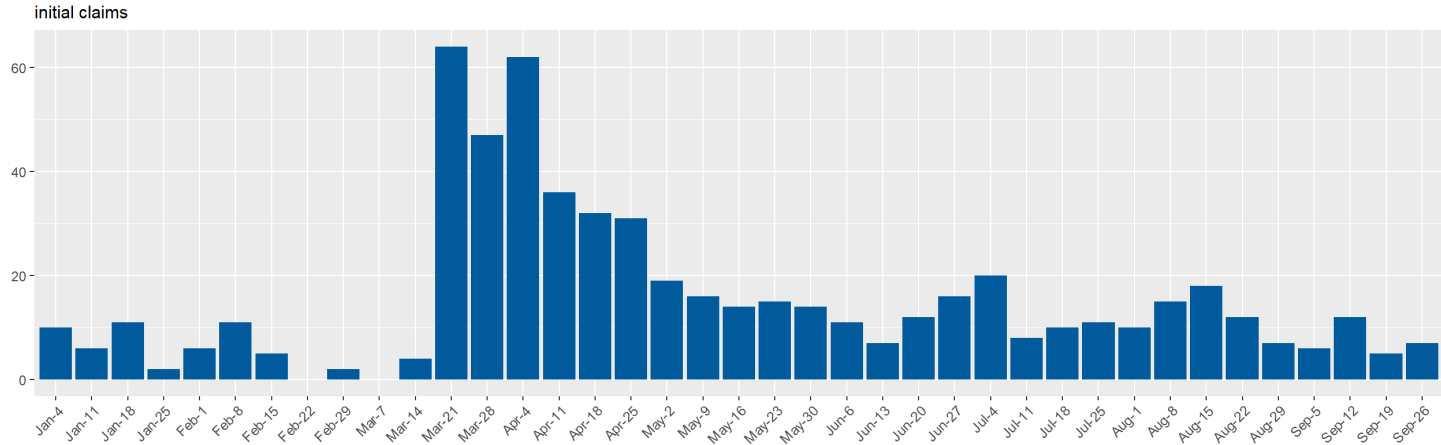
Washoe County Unemployment Insurance Claims by Week since January 2020



Source: DETR Internal Reporting

# UI Claims for White Pine County

White Pine County Unemployment Insurance Claims by Week since January 2020



Source: DETR Internal Reporting

# Data Dashboard Page

In effort to limit the overall length of this report, an interactive report was created that includes weekly data for all programs. This data is available for download on the "Data" tab of the Weekly Claims Characteristics by Program report below.

## Weekly Reports

### Weekly Claims Dashboard

The claims data contained on the ETA 539 report are used in current economic analysis of unemployment trends in Nevada.

### Weekly Claims Characteristics by Program

This report provides weekly information about the characteristics of claimants in Nevada for all programs.

### Weekly Claims by County

The claims data contained in this dashboard provide unemployment insurance trends by county in the State of Nevada. This dashboard allows for exploration of these trends.

## Monthly Reports

### Monthly Claims Dashboard

The ETA 5159 report contains monthly information on claims activities and on the number and amount of payments under state unemployment insurance laws. The data on this report provides the basis for many common UI measures such as average duration, exhaustion rates, weeks compensated, and benefits paid. This dashboard allows for exploration of these measures and trends in the State of Nevada.

### Monthly Claims Demographics

The ETA 203 report provides information about the characteristics of Unemployment Insurance (UI) claimants in Nevada. This data is useful in describing the population of claimants and determining how that population changes over time and under various conditions. It can also be compared with characteristic figures of the total unemployed as published by the Bureau of Labor Statistics (BLS).

# Glossary of Terms

**Initial Claim:** Any notice of unemployment filed to request a determination of eligibility for unemployment insurance benefits, or to begin a subsequent period of eligibility within a period of eligibility. Initial claims measure emerging unemployment in the state.

**Additional Claim:** An initial Claim which reopens a previously existing claim, where the claimant stopped filing due to intervening employment.

**Reopened Claim:** A reopened claim is filed if you have previously filed a claim but never submitted any weekly claims.

**Continued Claim:** After an initial claim determines a claimant is eligible for unemployment insurance benefits, the claimant's weekly benefit claims are counted under continued claims. Continued claims in aggregate represents the insured unemployed receiving benefits in the state, and is used for economic purposes.

## Credits

Special thanks to all the R and RStudio developers that built the packages to make this possible!

Packages used in this report: xaringan, xaringantheme, tidyverse, rmarkdown, viridis, scales, data.table, RcppRoll, kableExtra, knitr, patchwork, ggforce, ggthemes

Prepared by:  
Department of Employment, Training & Rehabilitation  
Research & Analysis Bureau