

MEDIA CONTACT
Rosa Mendez
detrmedia@detr.nv.gov

PRESS RELEASE



STEVE SISOLAK
Governor

ELISA CAFFERATA
Acting Director

DAVID SCHMIDT
Chief Economist

RESEARCH AND ANALYSIS BUREAU
UNEMPLOYMENT INSURANCE CLAIMS PRESS RELEASE

For Immediate Release
September 11, 2020

Unemployment Insurance Claims Decline in Regular and PUA Programs; Claims Rise in Extension Programs

CARSON CITY, NV - Finalized data from the Nevada Department of Employment, Training and Rehabilitation (DETR) show initial claims for unemployment insurance (UI) totaled 7,951 for the week ending September 5, down 81 claims, or 1.0 percent, compared to last week's total of 8,032 claims. This is the fewest initial claims filed since the week ending March 14. Through the week ending September 5, there have been 678,351 initial claims filed in 2020, 656,699 of which have been filed since the week ending March 14.

Continued claims, which represent the current number of insured unemployed workers filing weekly for unemployment insurance benefits, fell for the fourth straight week to 216,187, a decline of 5,412 claims, or 2.4 percent, from the previous week's total of 221,599. This is the fewest continued claims since the report week ending April 11 when there were 189,007 claims filed.

Nevada's insured unemployment rate, which is the ratio of continued claims in a week to the total number of jobs covered by the unemployment insurance system (also known as covered employment), fell by 0.4 percentage points to 15.6 percent. It should be noted that the calculation of the insured unemployment rate is different from that of the state's total unemployment rate.

The Pandemic Unemployment Assistance (PUA) program, which provides up to 46 weeks of benefits for the self-employed, 1099 contract workers, and gig workers saw 9,832 initial claims filed in the week September 5, a decrease of 579, or 5.6 percent, from last week's total of 10,411. This is the fewest PUA initial claims filed in a week since the start of the program. Through the week ending September 5, 441,179 PUA initial claims have been filed.

PUA continued claims totaled 99,397 in the week ending September 5, a decline of 11,459, or 10.3 percent, from the previous week's revised total of 110,856. Weekly PUA continued claims are now reported by the benefit week claimed. This follows the reporting procedure for regular continued claims and allows us to understand the number of unemployed workers filing weekly for PUA benefits.

Nevada's Pandemic Emergency Unemployment Compensation (PEUC) program, which provides up to 13 weeks of benefits to individuals who have exhausted their regular unemployment benefits, saw 25,898 claims filed in the week, an increase of 2,138 claims from a week ago. In the next several weeks, PEUC claims are expected to increase sizably as large cohorts of regular program filers exhaust their regular benefits.

Nevada's State Extended Benefit (SEB) program, which provides up to 20 weeks of benefits to individuals who have exhausted both their regular unemployment benefits and PEUC program benefits, saw 3,187 claims filed in the week, an increase of 298 claims from a week ago.

Nationally, the advance figure for unadjusted regular initial claims was 857,148 an increase of 20,140 claims from the previous week. The national insured unemployment rate for the week ending August 29 was 9.0 percent, unchanged from the previous week's rate. The national rate is reported with a one-week lag.

State level data from the U.S. Department of Labor can be found here [[DOL Weekly Claims Report](#)]. Please note that state data from the U.S. Department of Labor tends to be released more slowly than national data. View the state level unemployment insurance claims report for the week ending September 5 here [[Weekly Report](#)]. A dashboard for Nevada weekly claims can be viewed here [[Weekly Dashboard](#)]. A page for Nevada weekly claims characteristics by program can be viewed here [[Weekly Claims Characteristics](#)]. A monthly claims dashboard can be found here [[Monthly Dashboard](#)] and a monthly claims demographic page can be found here [[Monthly Demographics](#)]. View weekly county claims trends here [[Weekly by County](#)]. Dashboards are interactive reports that allow you to dig deeper into the data.

To file for unemployment in the State of Nevada, please use the online application available 24/7 at <http://ui.nv.gov/css.html>. People unable to file online may file via telephone by calling a UI Claims Call Center between 8 a.m. and 8 p.m., Monday through Friday and Saturday between 8 a.m. and noon. Northern UI Call Center: (775) 684-0350; Southern UI Call Center: (702) 486-0350; Rural areas and Out-of-State: (888) 890-8211. Claimants are highly encouraged to use the internet to file their UI claims, as it is the fastest and most convenient way to file and reserves the phone lines for individuals who are not able or do not have the necessary resources to file online. Online filing during non-peak hours, such as early mornings, at night or weekends is also highly recommended. To continue to receive benefits, claimants must file weekly.

DETR is aware of the unemployment fraud that is afflicting the state and is actively working with law enforcement entities and the Department of Labor to detect, prevent and address unemployment fraud. Employers and individuals who believe they have been a victim of unemployment fraud, can file a report with the agency by visiting www.detr.nv.gov and selecting the [Fraud Reporting Form](#) on the left under "Quick links." Once a report is filed with the Department of Employment, Training and Rehabilitation (DETR), nothing else is required by the reporting party. DETR will flag the account so payments are not issued. If needed, the Department may reach out for additional information. To view what additional steps individuals and employers can take should they believe a fraudulent claim has been filed, review DETR's [fraud flyer](#) located on the Bulletin Board at www.detr.nv.gov.

For Nevada workers who are self-employed, 1099 contract workers, and gig workers, Nevada's Pandemic Unemployment Assistance program (PUA) is available. For further information regarding the PUA program visit, detr.nv.gov/pua#. Individuals will be able to file online at www.employnv.gov or call the PUA Call Center at (800) 603-9681 between 8 a.m. and 8 p.m., Monday through Friday, and Saturday between 8 a.m. and noon.

Claimants are encouraged to visit <http://ui.nv.gov/css.html> and at detr.nv.gov/coronavirus to view important announcements and access essential resources. Online tutorial videos are also available in both English and Spanish and can be viewed on the [Nevada Unemployment Insurance](#) YouTube page.

###

Visit us <http://www.nevadaworkforce.com> and Follow us on Twitter: <http://www.twitter.com/NVlabormarket>

ABOUT THE RESEARCH AND ANALYSIS BUREAU

The Research and Analysis Bureau is Nevada's premier source for labor market information. A part of DETR, the Bureau is responsible for creating, analyzing, and reporting Nevada's labor market information, in cooperation with the United States Bureau of Labor Statistics (BLS).

UNEMPLOYMENT INSURANCE CLAIMS

INITIAL CLAIMS:

7,951 REGULAR + 9,832 PUA

Regular initial claims down 81 claims, or 1.0%, compared to the previous week.

Fewest initial claims since the week ending March 14th when there were 6,356.

PUA initial claims down 579, or 5.6%, compared to the previous week.

CONTINUED CLAIMS:

**216,187 REGULAR + 99,397 PUA +
25,898 PEUC + 3,187 SEB**

Regular continued claims down 5,412 claims, or 2.4%, compared to the previous week.

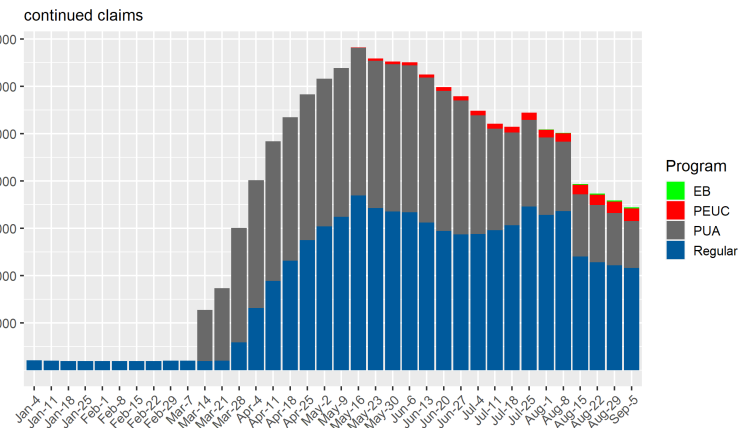
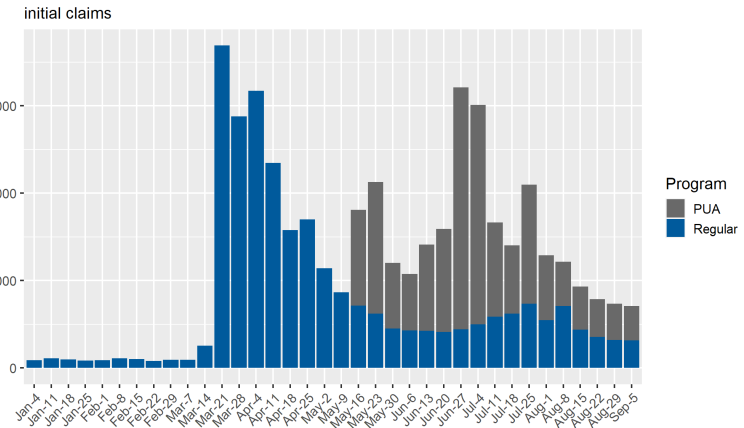
PUA continued claims down 11,459 claims, or 10.3%, compared to the previous week.

PEUC continued claims up 2,138 claims, or 9.0%, compared to the previous week.

SEB continued claims up 298 claims, or 10.3%, compared to the previous week.

Across all programs, there were a total of 344,669 claims filed in the week.

State of Nevada Weekly Claims for Unemployment Insurance
weekly totals since start of 2020



Source: ETA 539



State of Nevada Unemployment Insurance Claims

Filing Statistics for Week Ending 9/5/2020

Department of Employment, Training & Rehabilitation

Elisa Cafferata, Acting Director

Jeffrey Frischmann, Acting Administrator

David Schmidt, Chief Economist

*Prepared by the Research and Analysis Bureau
Updated: 2020-09-10*

Weekly Federal UI Claim Statistics

UI Initial Claims by Week

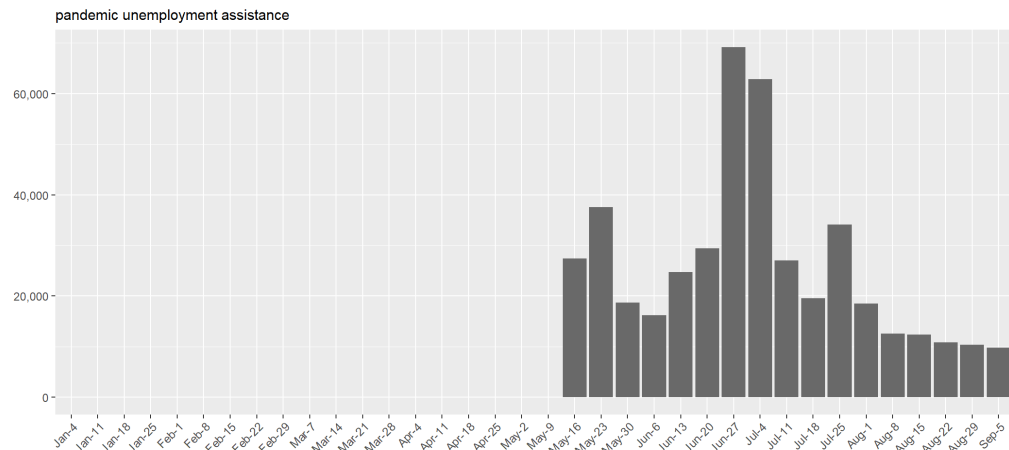
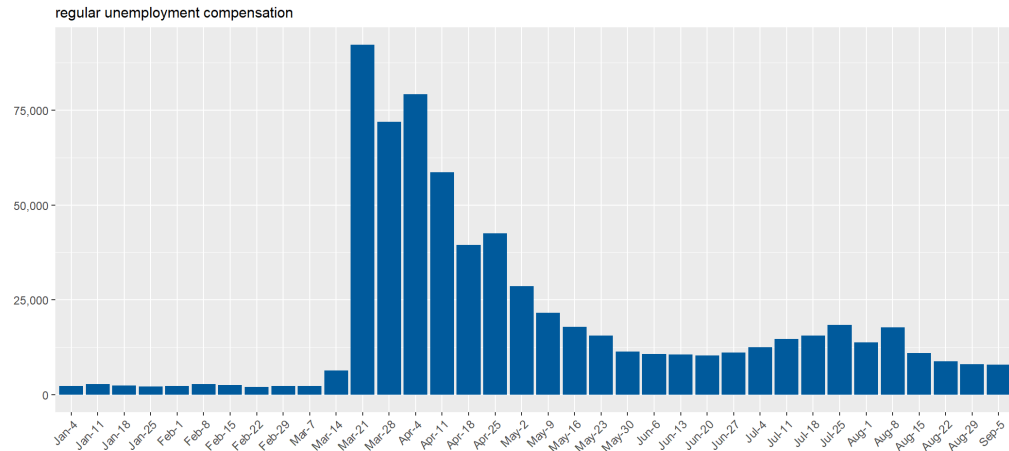
Final initial claims totals for week ending 9/5/2020 (ETA 539).

Regular initial claims totaled 7,951 in the week, down 81 claims, or 1.0%, compared to the previous week.

Pandemic Unemployment Assistance (PUA) claims totaled 9,832 in the week, down 579, or 5.6%, compared to the previous week.

A claimant may have filed BOTH a regular initial claim and a PUA initial claim.

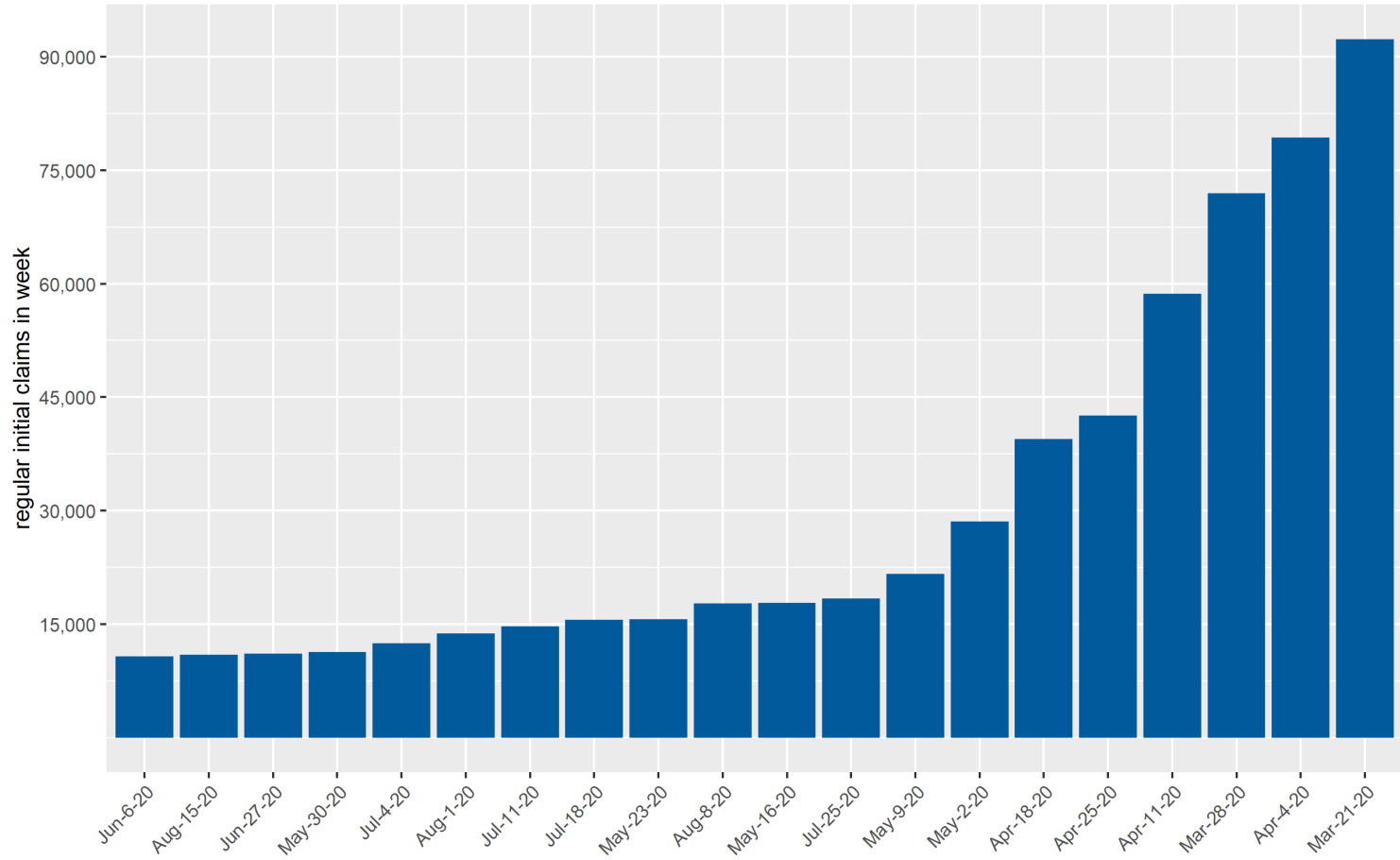
State of Nevada Weekly Initial Claims for Unemployment Insurance by program



Source: ETA 539

State of Nevada Initial Claims All-Time Weekly Highs

State of Nevada Weekly Initial Claims
highest 20 weeks in state history



Source: ETA 539

UI Continued Claims by Week

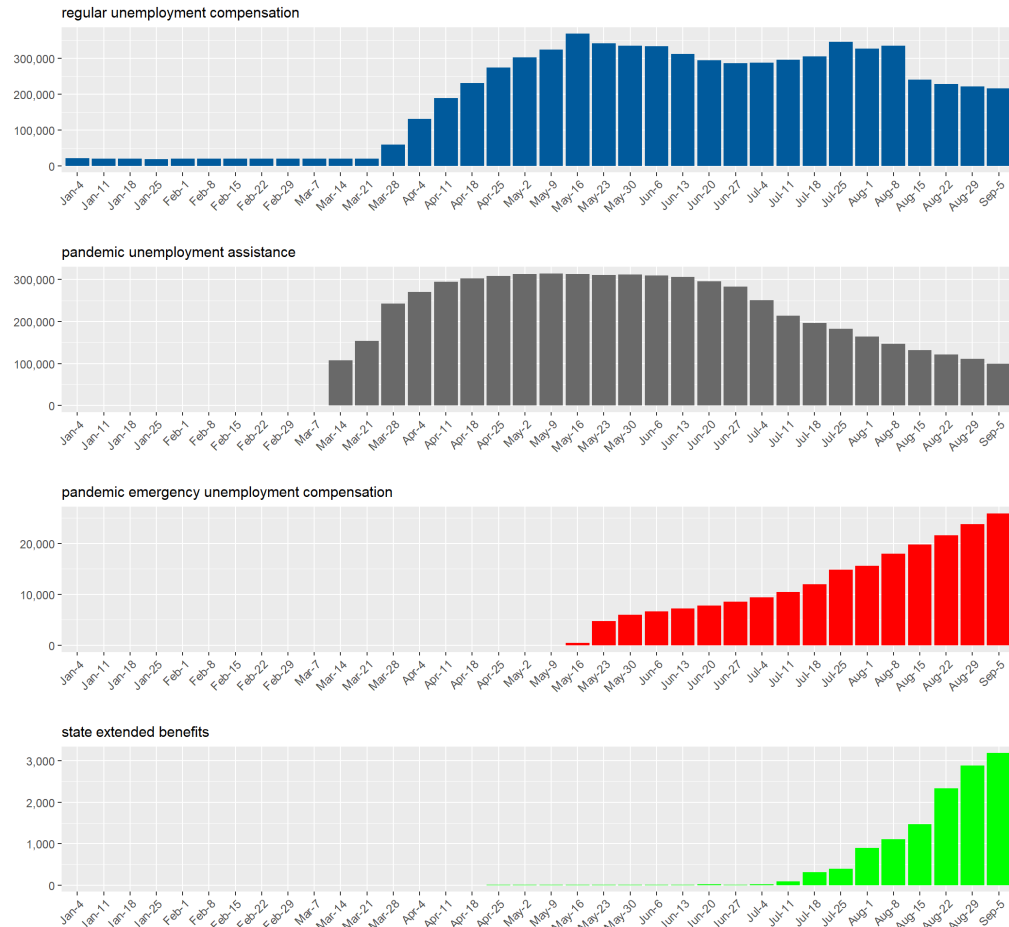
Regular continued claims totaled 216,187 in the week, down 5,412 claims, or 2.4%, compared to the previous week.

Pandemic Unemployment Assistance continued claims totaled 99,397 in the week, down 11,459 claims, or 10.3%, compared to the previous week. PUA continued claims are backdated to show the weeks PUA was claimed.

Pandemic Emergency Unemployment Compensation claims totaled 25,898 in the week, up 2,138 claims, or 9.0%, compared to the previous week.

State Extended Benefit claims totaled 3,187 in the week, up 298 claims, or 10.3%, compared to the previous week.

State of Nevada Weekly Continued Claims for Unemployment Insurance by program

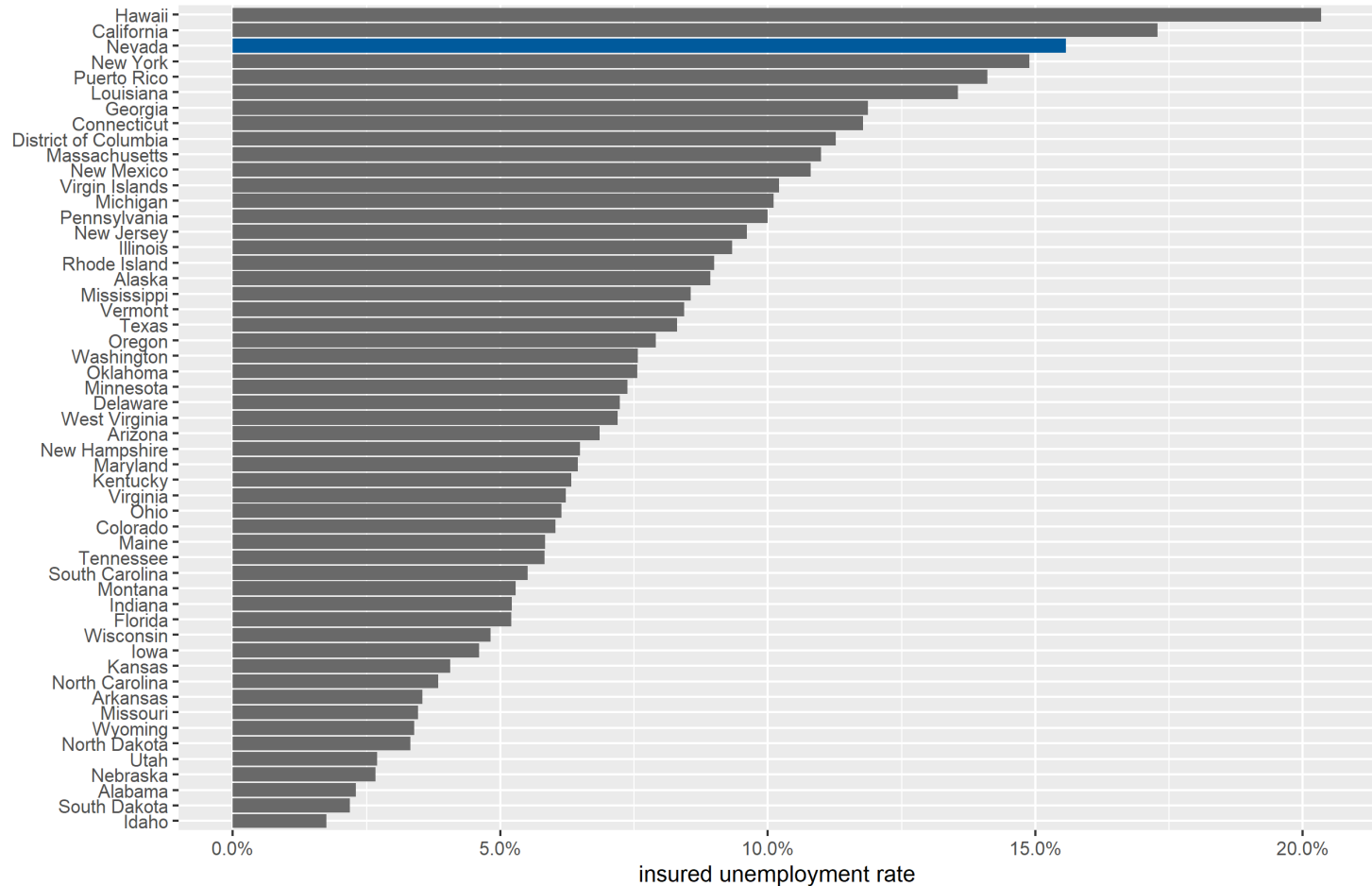


Source: ETA 539

Insured Unemployment Rate

Insured Unemployment Rate by State

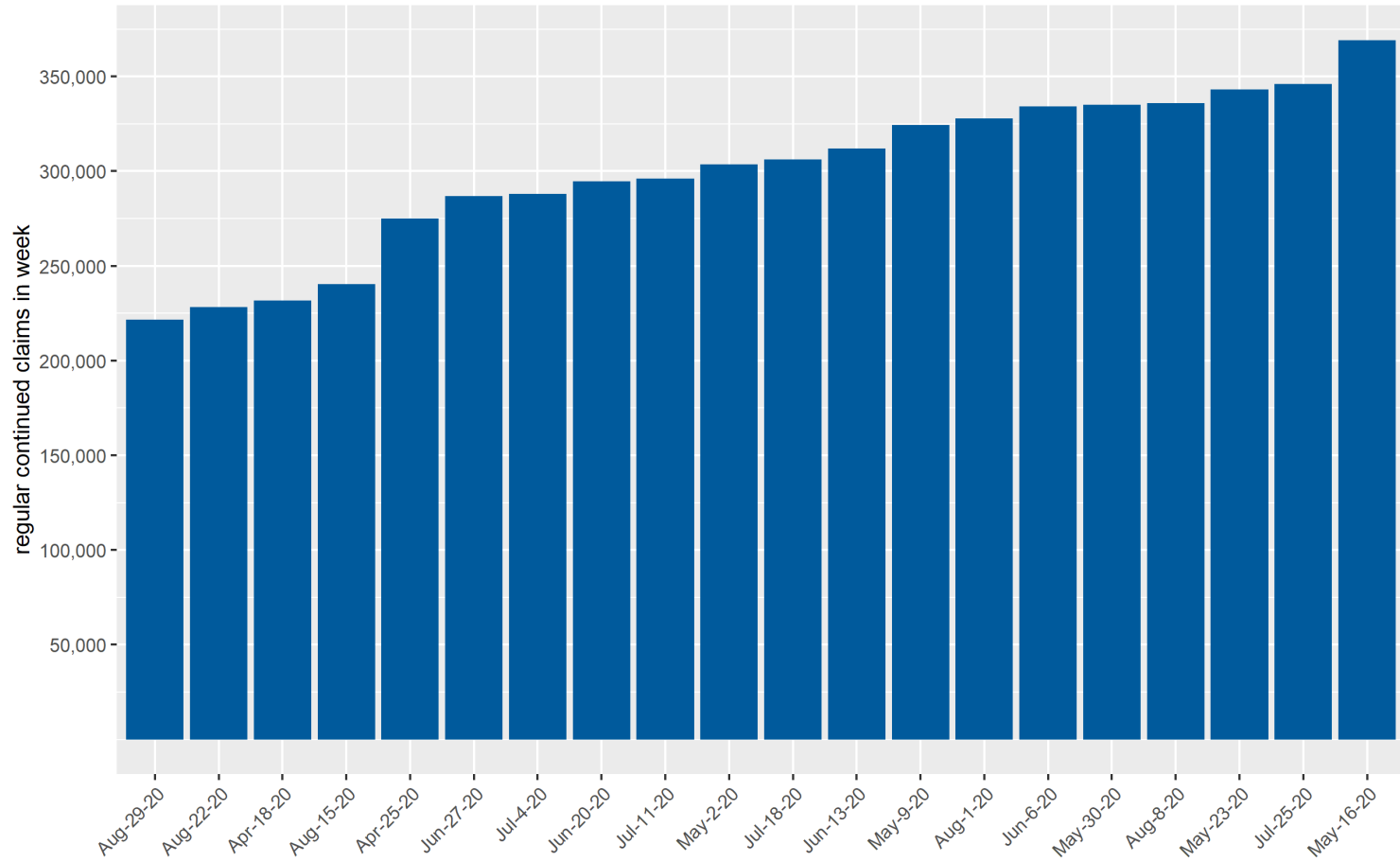
weekly rate by state for most recent available week



Source: ETA 539

State of Nevada Continued Claims All-Time Weekly Highs

State of Nevada Weekly Continued Claims
highest 20 weeks in state history



Source: ETA 539

UI Trust Fund Status

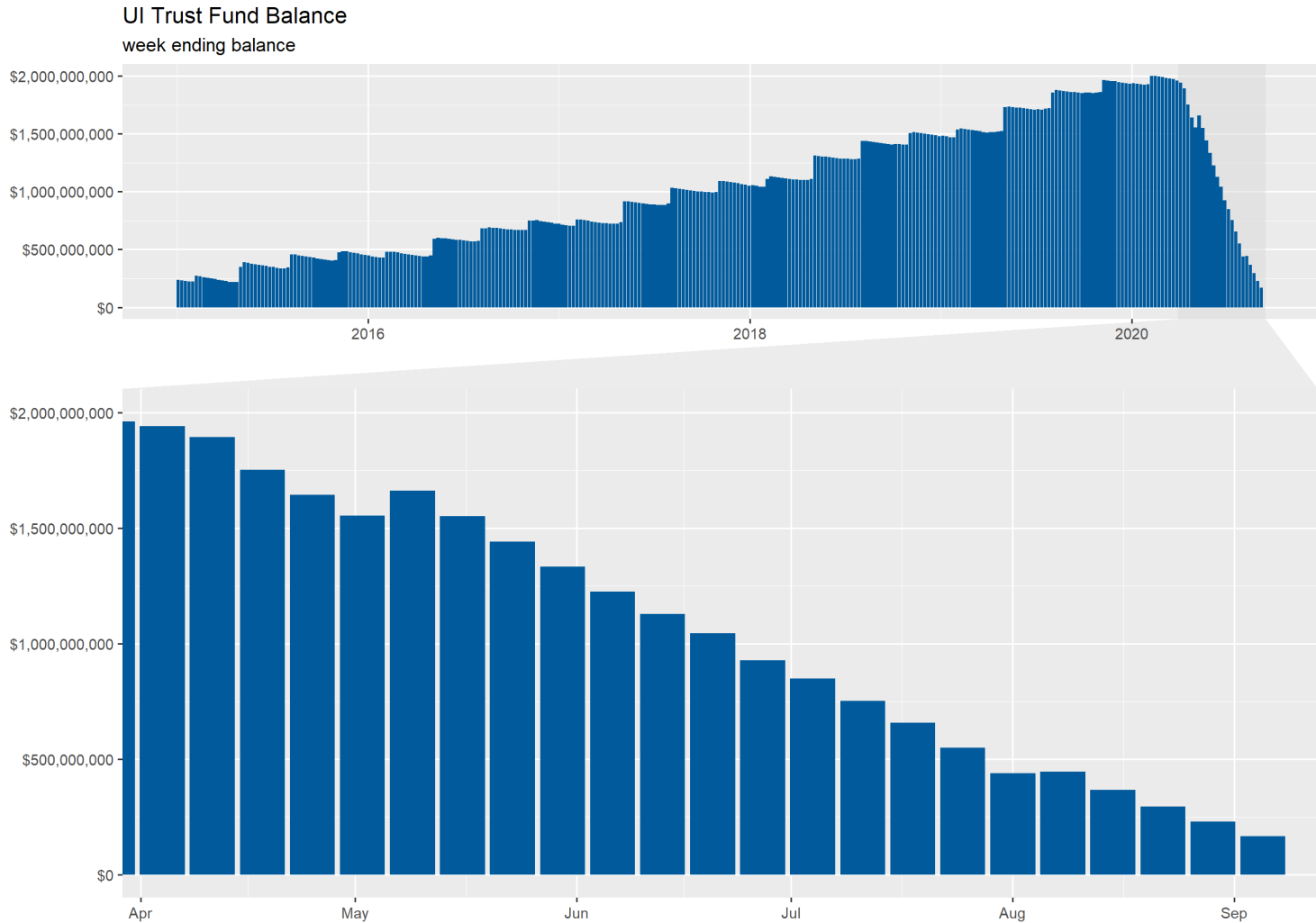
UI Trust Fund Balance & Payment Activity

Reported totals and amounts for week ending 9/5/2020

This Trust Fund balance is the end of week balance from DETR Financial Management reports. Due to lags in reporting of transactions and adjustments, week-to-week totals may change. Weeks of benefits remaining is calculated by using last week's regular UI payments total.

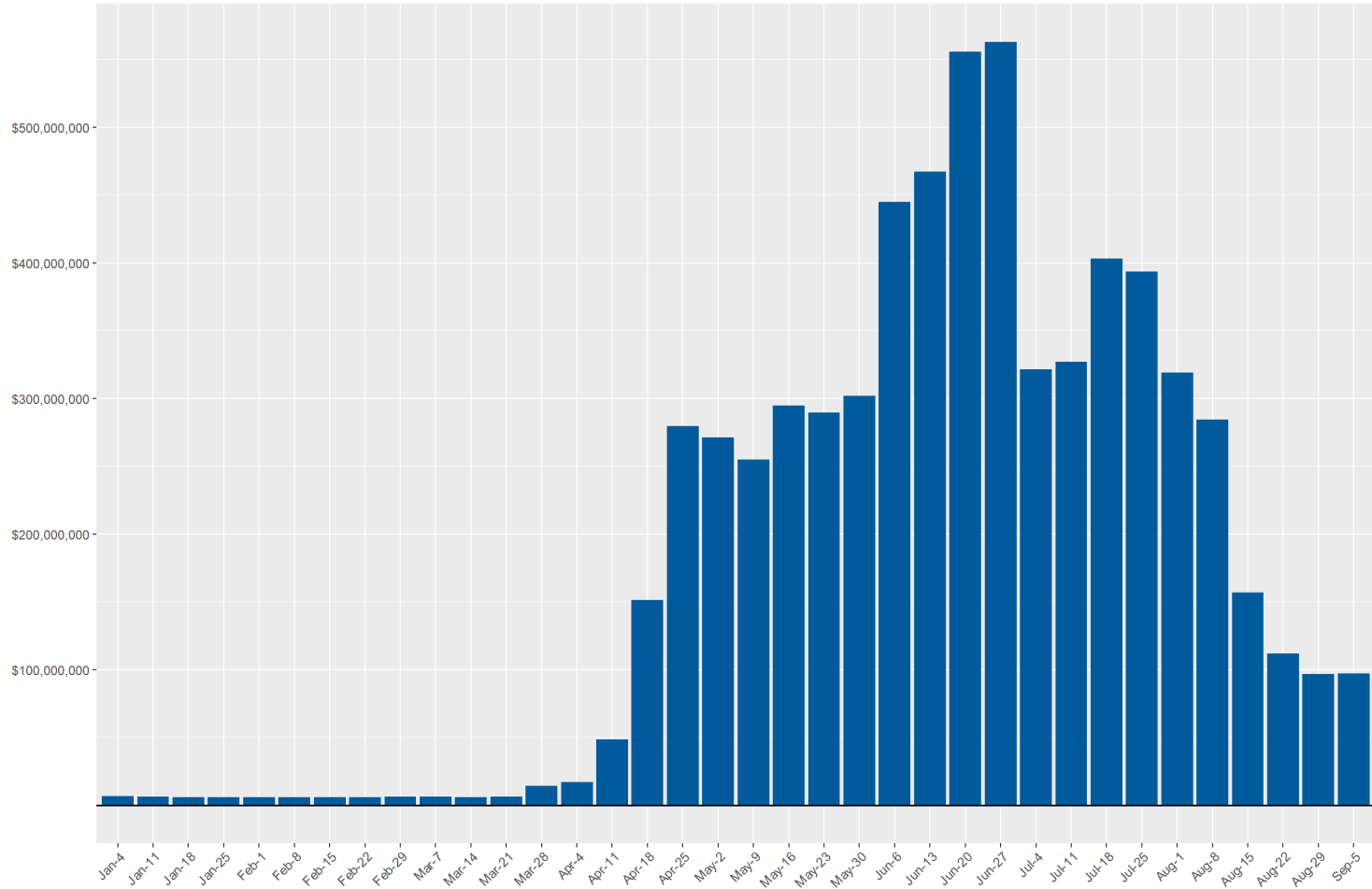
Measure	Current Week	Previous Week	Change from Previous Week	Year-to-Date
Trust Fund Balance	\$166,764,901	\$229,673,293	-\$62,908,392	-
Weeks of Benefits in Trust Fund	2.54	3.68	-1.14	-
Regular UI Payments	\$65,722,846	\$62,425,156	\$3,297,690	\$2,276,089,755
Regular-FPUC Payments	\$7,361,940	\$8,500,680	-\$1,138,740	\$2,853,801,420
PEUC Payments	\$6,441,488	\$5,612,025	\$829,463	\$59,340,806
PUA Payments	\$13,168,065	\$14,738,368	-\$1,570,304	\$506,851,308
PUA-FPUC Payments	\$3,975,760	\$4,860,000	-\$884,240	\$836,464,065
SEB Payments	\$526,693	\$646,436	-\$119,743	\$2,229,548
All Programs	\$97,196,792	\$96,782,666	\$414,126	\$6,534,776,902

Trust Fund Balance



Weekly Payments

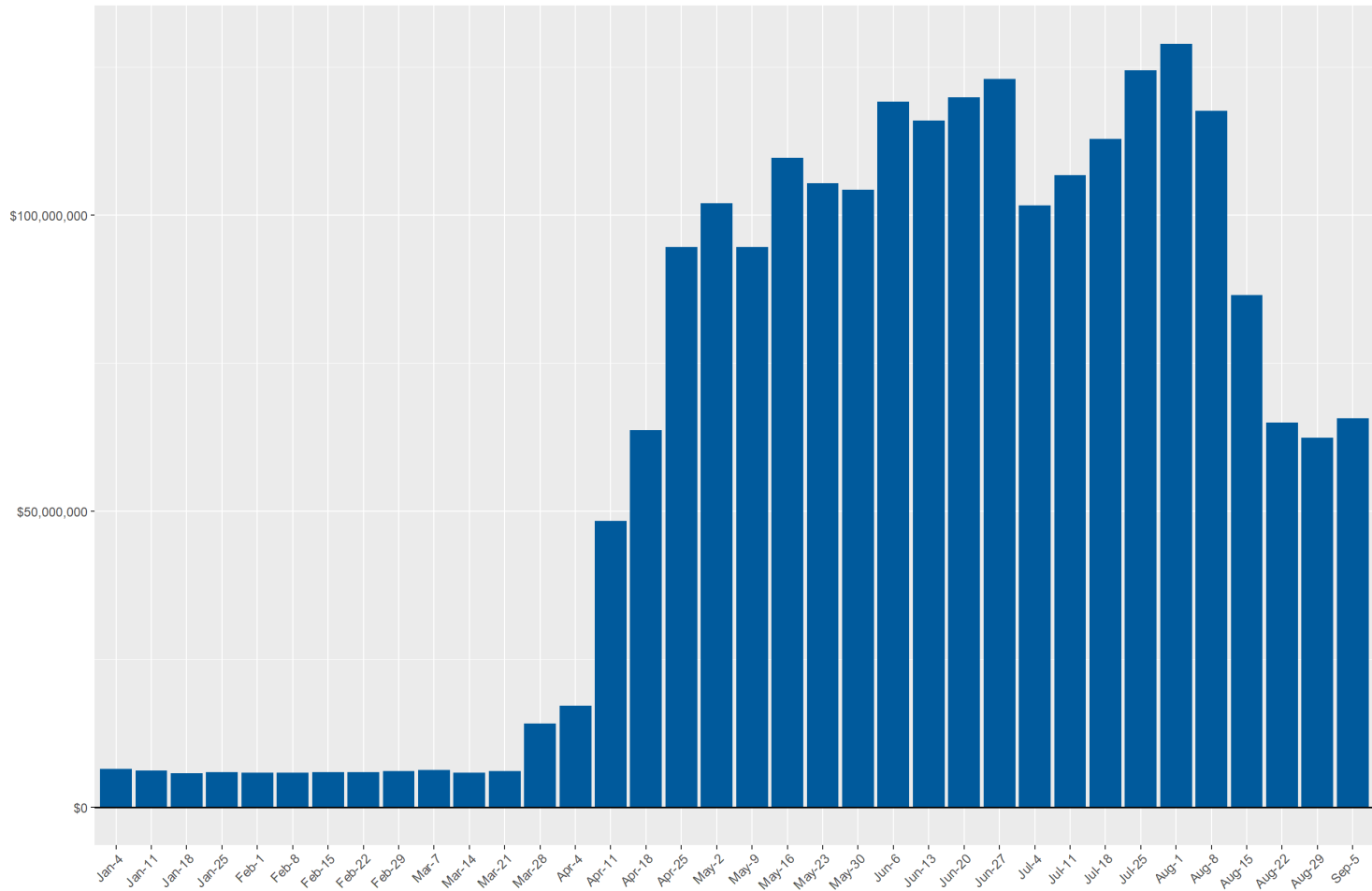
Unemployment Insurance Weekly Payments
compensation total for all programs



Source: DETR Internal Reporting

Weekly Payments by Program (Regular UI)

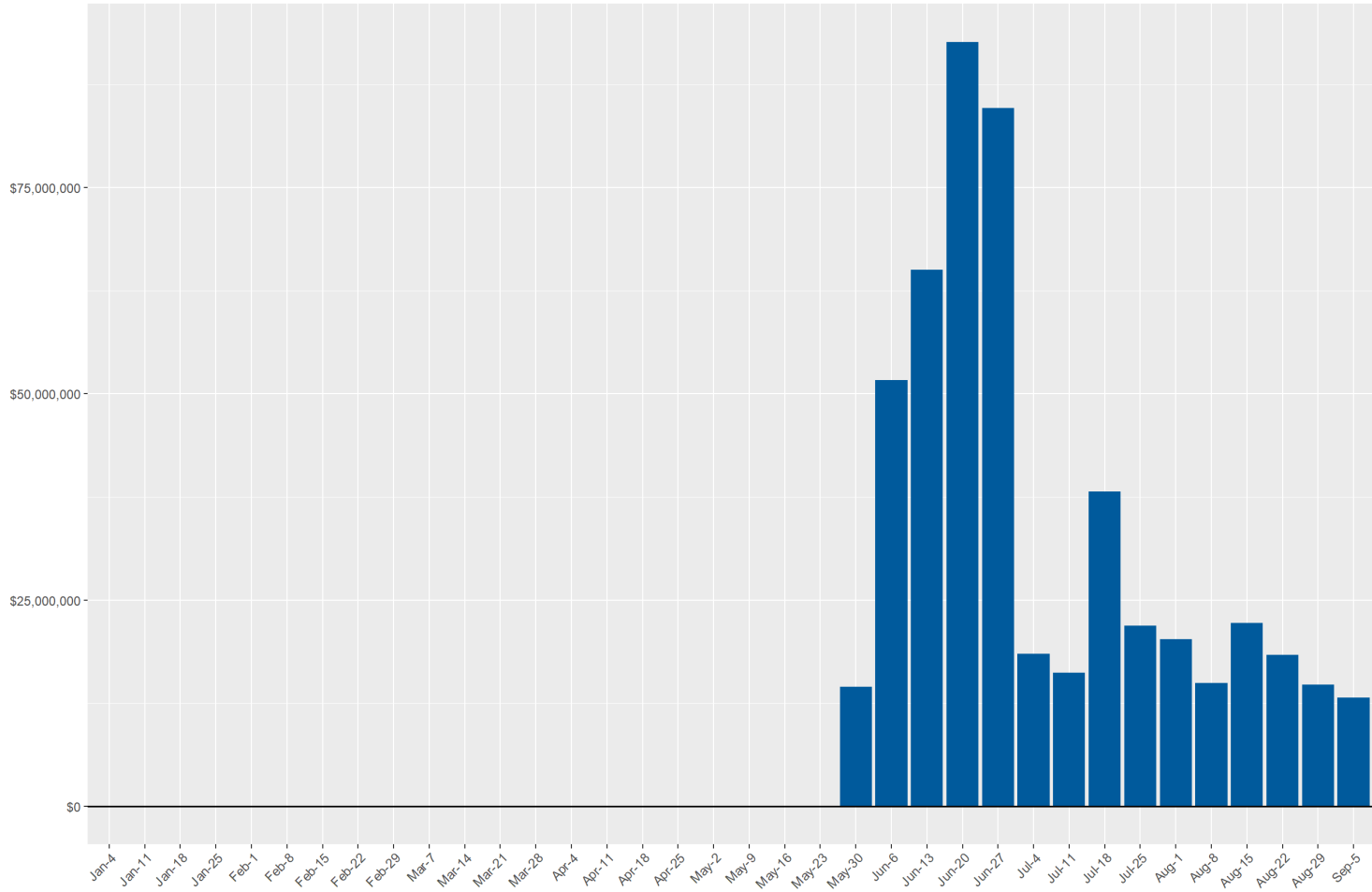
Unemployment Insurance Weekly Payments
regular unemployment insurance compensation



Source: DETR Internal Reporting

Weekly Payments by Program (PUA)

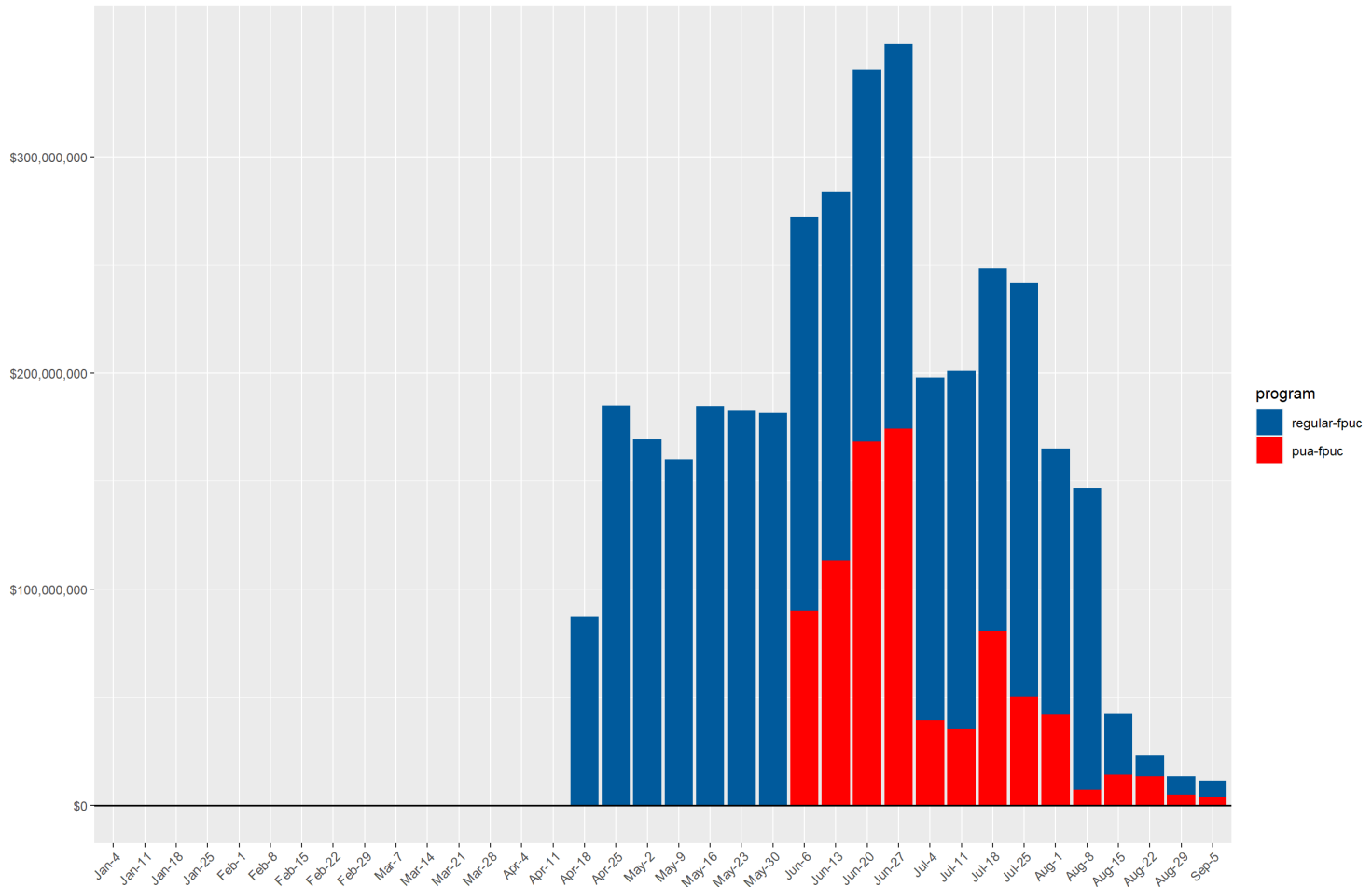
Unemployment Insurance Weekly Payments
pandemic unemployment assistance compensation



Source: DETR Internal Reporting

Weekly Payments by Program (FPUC)

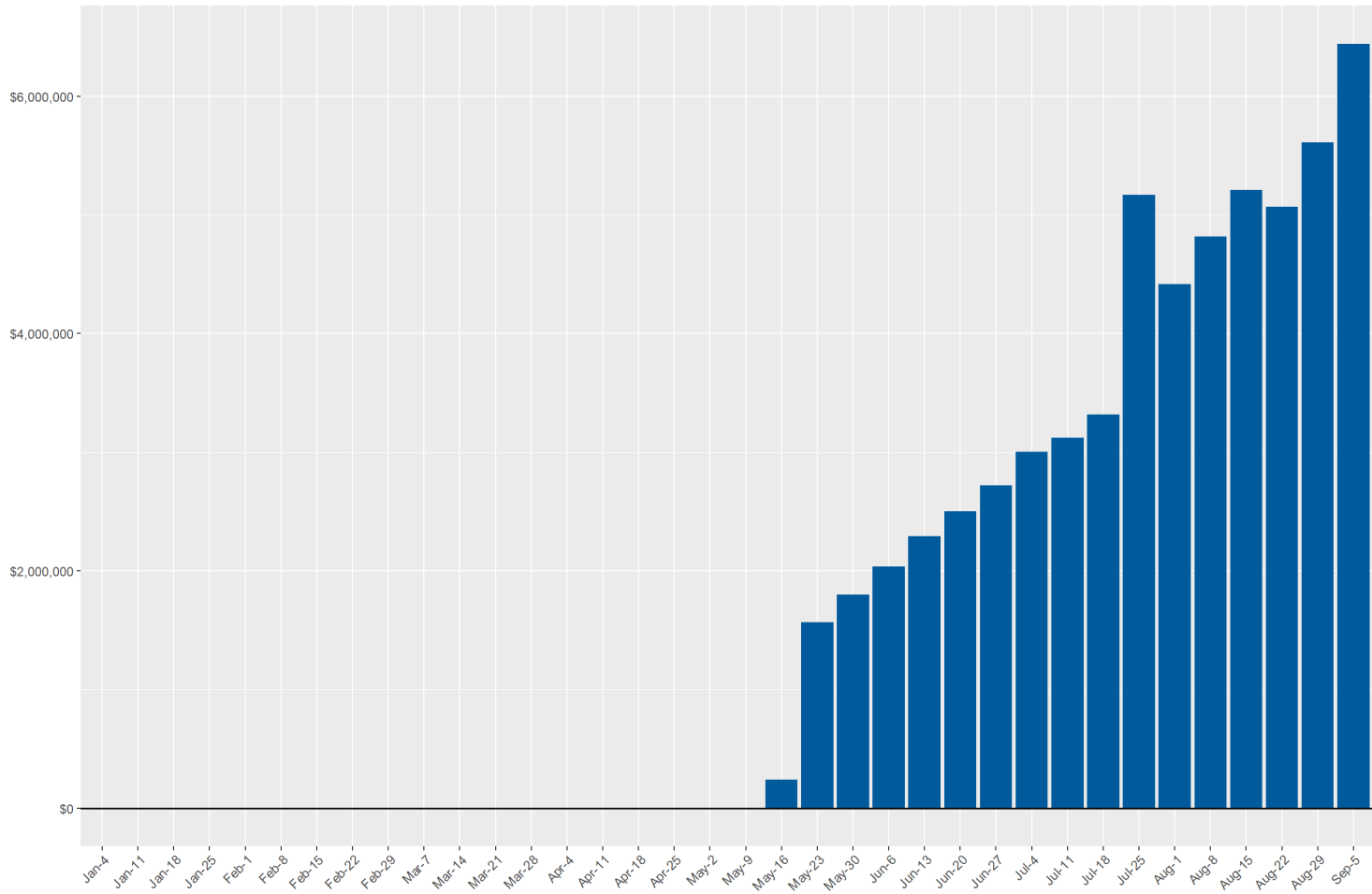
Unemployment Insurance Weekly Payments
federal pandemic unemployment compensation



Source: DETR Internal Reporting

Weekly Payments by Program (PEUC)

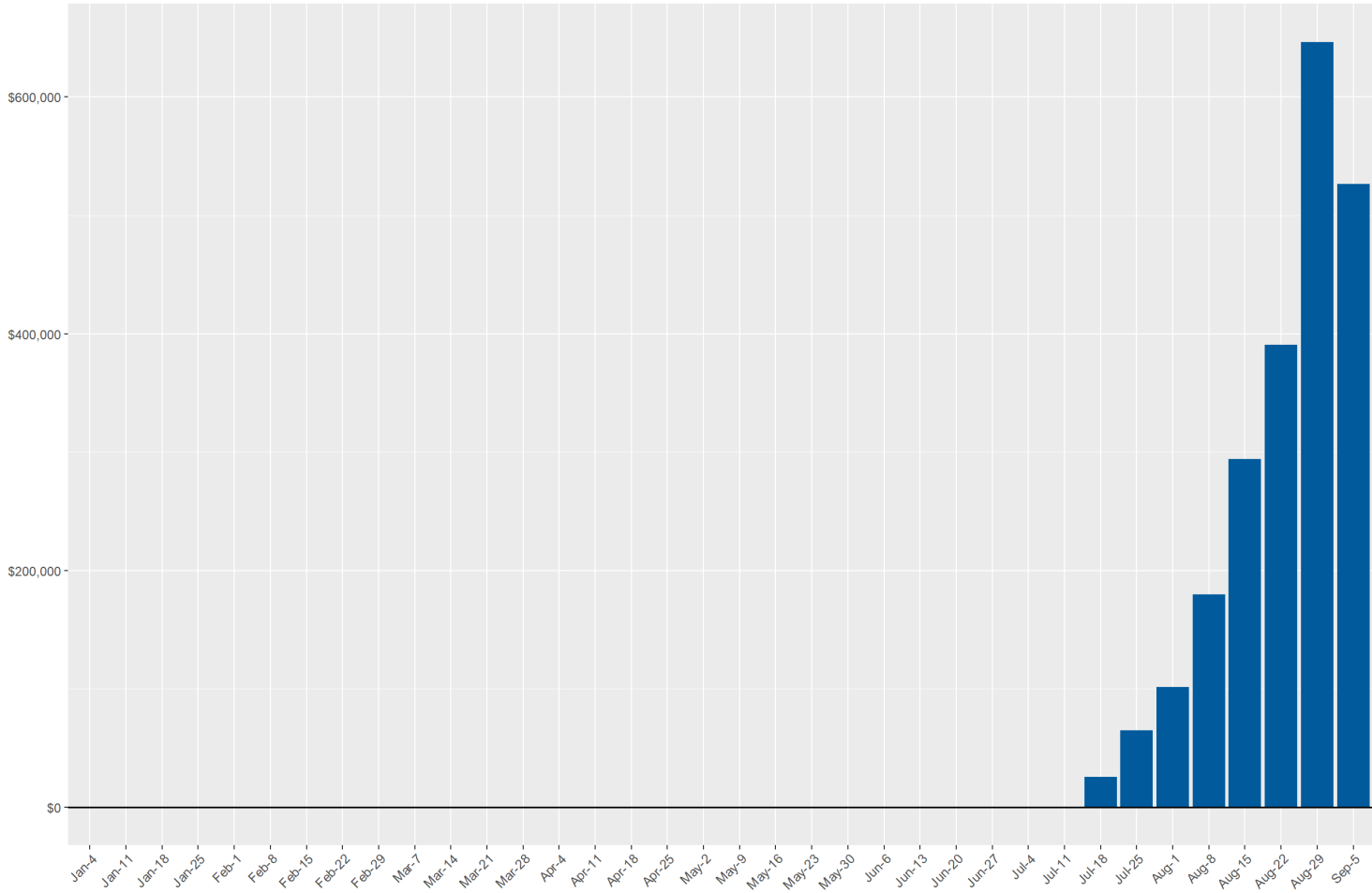
Unemployment Insurance Weekly Payments
federal pandemic emergency unemployment compensation



Source: DETR Internal Reporting

Weekly Payments by Program (SEB)

Unemployment Insurance Weekly Payments
state extended benefits compensation



Source: DETR Internal Reporting

UI Daily Claim Statistics (Regular UC)

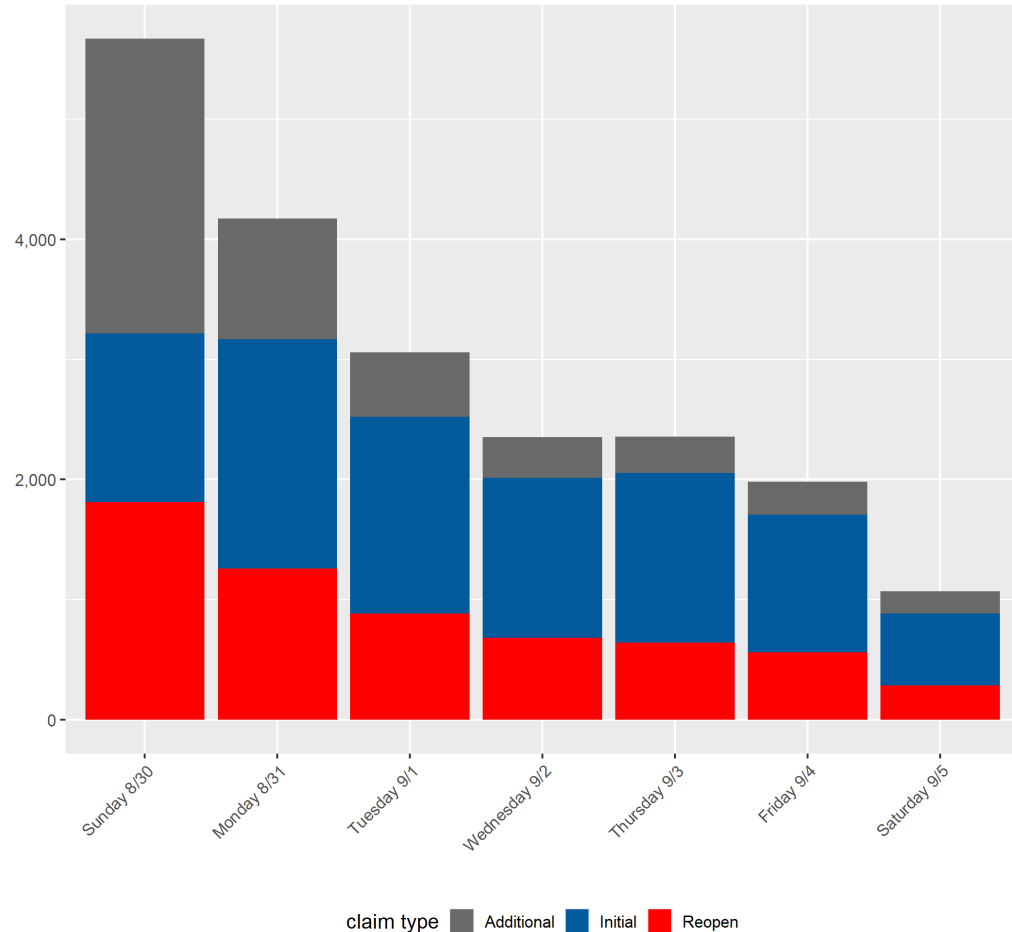
UI Initial Claims by Day for Week Ending 9/5/2020

Initial claims by type and filing method for week ending 9/5/2020.

Initial claims include new, additional, and reopened (see end of document for glossary of terms). Reopened claims are not counted in federal reporting totals.

Daily data is unofficial and is unlikely to match federal reporting totals due to reporting differences.

Initial Claims for Unemployment Insurance
daily totals



Source: DETR Internal Reporting

UI Initial Claims by Day for Week Ending 9/5/2020

Claim Type	Filing Method	Sunday 8/30	Monday 8/31	Tuesday 9/1	Wednesday 9/2	Thursday 9/3	Friday 9/4	Saturday 9/5	Total
Claim Type & Filing Method									
Additional	Internet	704	440	288	219	209	199	139	2,198
Additional	Phone	1,751	565	252	122	93	77	49	2,909
Initial	Internet	1,401	1,721	1,479	1,159	1,093	955	587	8,395
Initial	Phone	2	189	159	171	323	190	10	1,044
Reopen	Internet	1,783	1,153	781	602	631	489	277	5,716
Reopen	Phone	29	106	102	80	8	71	7	403
Filing Method									
Total	Internet	3,888	3,314	2,548	1,980	1,933	1,643	1,003	16,309
Total	Phone	1,782	860	513	373	424	338	66	4,356
Total									
Total	All	5,670	4,174	3,061	2,353	2,357	1,981	1,069	20,665

UI Initial Claims by Day Comparison to Previous Week

Previous Week

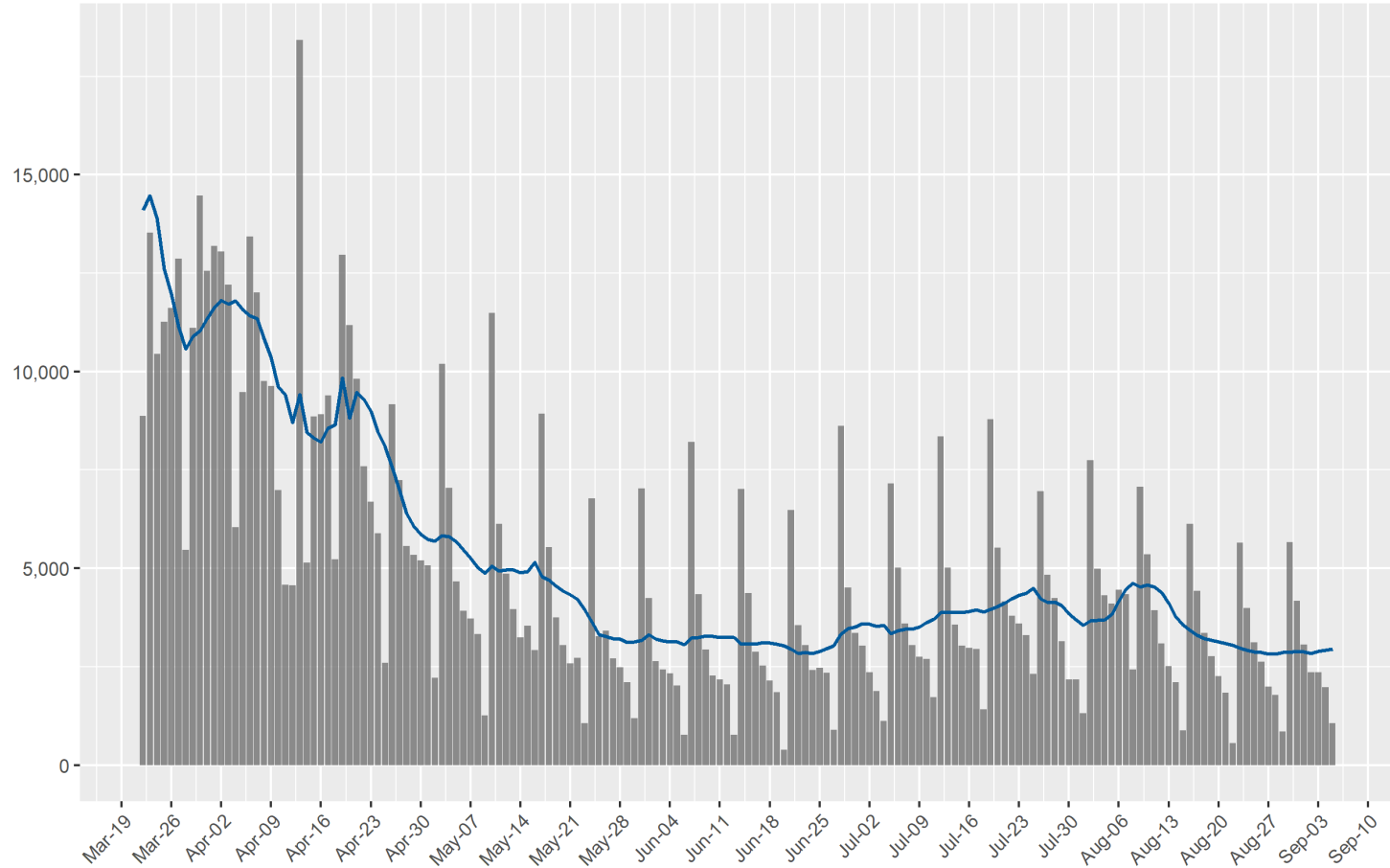
Claim Type	Sunday 8/23	Monday 8/24	Tuesday 8/25	Wednesday 8/26	Thursday 8/20	Friday 8/28	Saturday 8/29	Total
Additional	2,477	998	558	341	323	291	173	5,161
Initial	1,590	1,876	1,854	1,626	1,184	1,050	470	9,650
Reopen	1,585	1,113	704	653	489	441	209	5,194
Total	5,652	3,987	3,116	2,620	1,996	1,782	852	20,005

Current Week

Claim Type	Sunday 8/30	Monday 8/31	Tuesday 9/1	Wednesday 9/2	Thursday 9/3	Friday 9/4	Saturday 9/5	Total
Additional	2,455	1,005	540	341	302	276	188	5,107
Initial	1,403	1,910	1,638	1,330	1,416	1,145	597	9,439
Reopen	1,812	1,259	883	682	639	560	284	6,119
Total	5,670	4,174	3,061	2,353	2,357	1,981	1,069	20,665

UI Initial Claims Daily Series

Initial Claims for Unemployment Insurance
daily filings since 3/22; line represents 7 day average



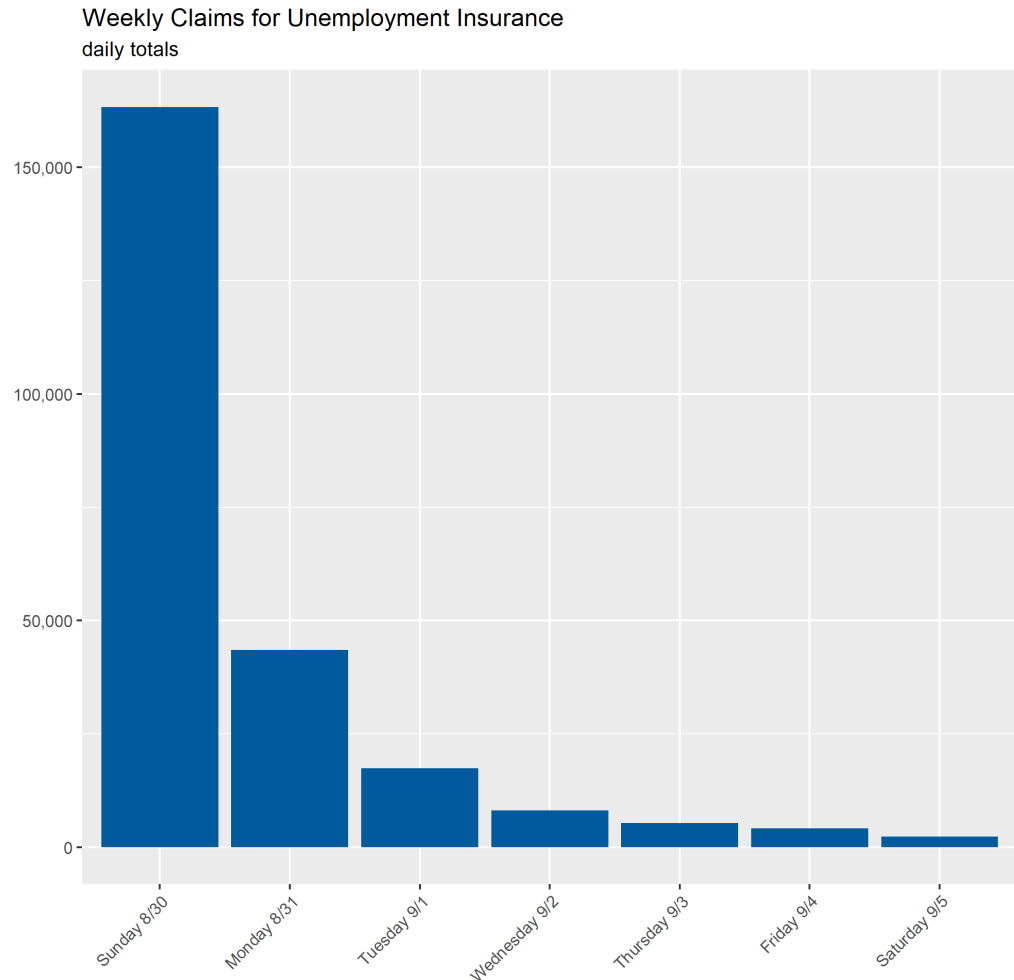
Source: DETR Internal Reporting

UI Continued Claims by Day for Week Ending 9/5/2020

Continued claims by type and filing method for week ending 9/5/2020.

Sunday is the beginning of new claim week and when claimants *typically* file their weekly claim.

Daily data is unofficial and is unlikely to match federal reporting totals due to reporting differences.



Source: DETR Internal Reporting

UI Continued Claims by Day for Week Ending 9/5/2020

Claim Type	Filing Method	Sunday 8/30	Monday 8/31	Tuesday 9/1	Wednesday 9/2	Thursday 9/3	Friday 9/4	Saturday 9/5	Total
Claim Type & Filing Method									
Weekly	Internet	151,175	40,766	15,592	6,867	4,450	3,236	2,213	224,299
Weekly	Phone	12,150	2,760	1,797	1,274	881	887	148	19,897
Filing Method									
Total	Internet	151,175	40,766	15,592	6,867	4,450	3,236	2,213	224,299
Total	Phone	12,150	2,760	1,797	1,274	881	887	148	19,897
Total									
Total	All	163,325	43,526	17,389	8,141	5,331	4,123	2,361	244,196

UI Continued Claims by Day Comparison

Last Week

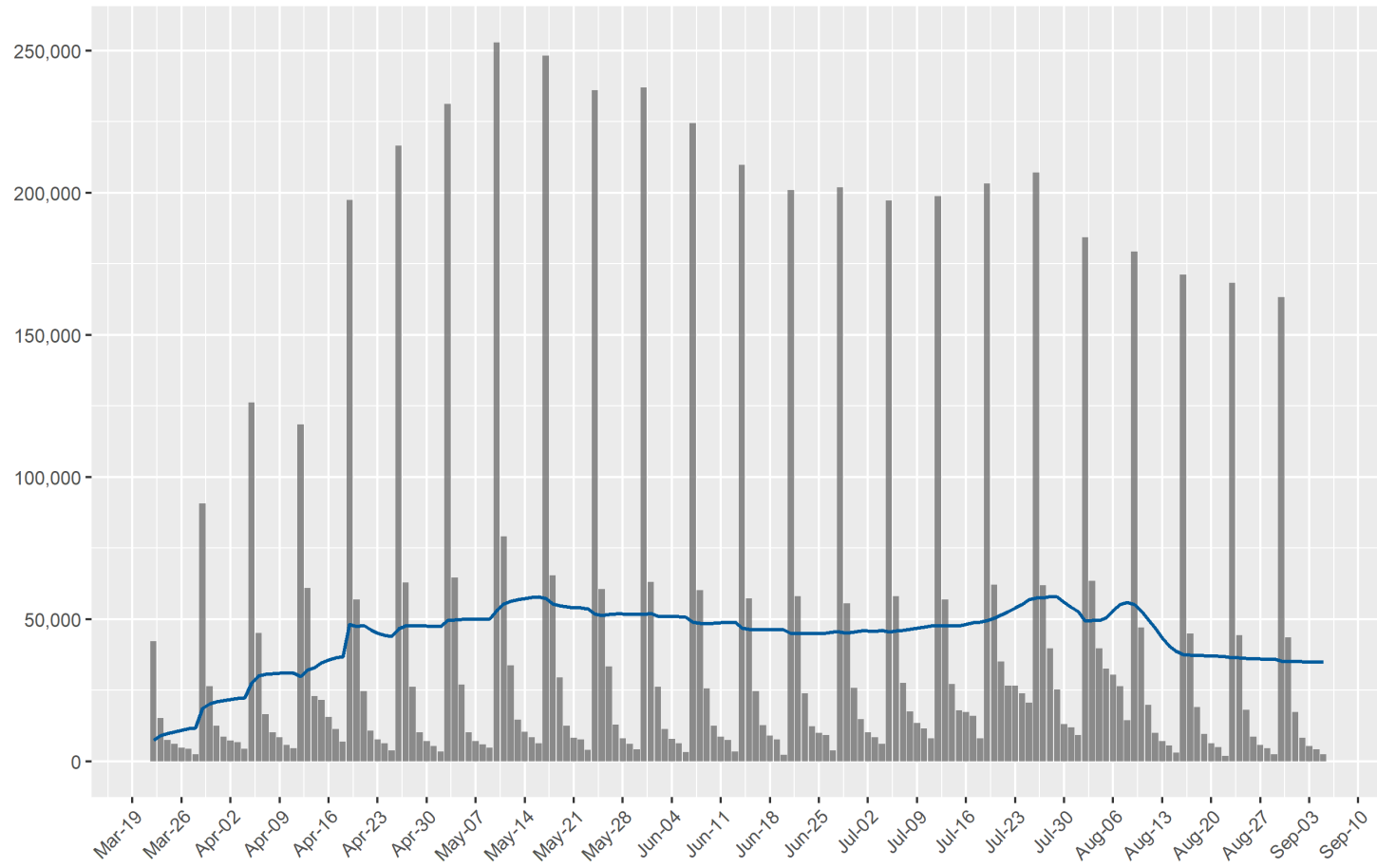
Claim Type	Sunday 8/23	Monday 8/24	Tuesday 8/25	Wednesday 8/26	Thursday 8/20	Friday 8/28	Saturday 8/29	Total
Weekly	168,331	44,429	18,119	8,559	5,642	4,495	2,413	251,988
Total	168,331	44,429	18,119	8,559	5,642	4,495	2,413	251,988

Current Week

Claim Type	Sunday 8/30	Monday 8/31	Tuesday 9/1	Wednesday 9/2	Thursday 9/3	Friday 9/4	Saturday 9/5	Total
Weekly	163,325	43,526	17,389	8,141	5,331	4,123	2,361	244,196
Total	163,325	43,526	17,389	8,141	5,331	4,123	2,361	244,196

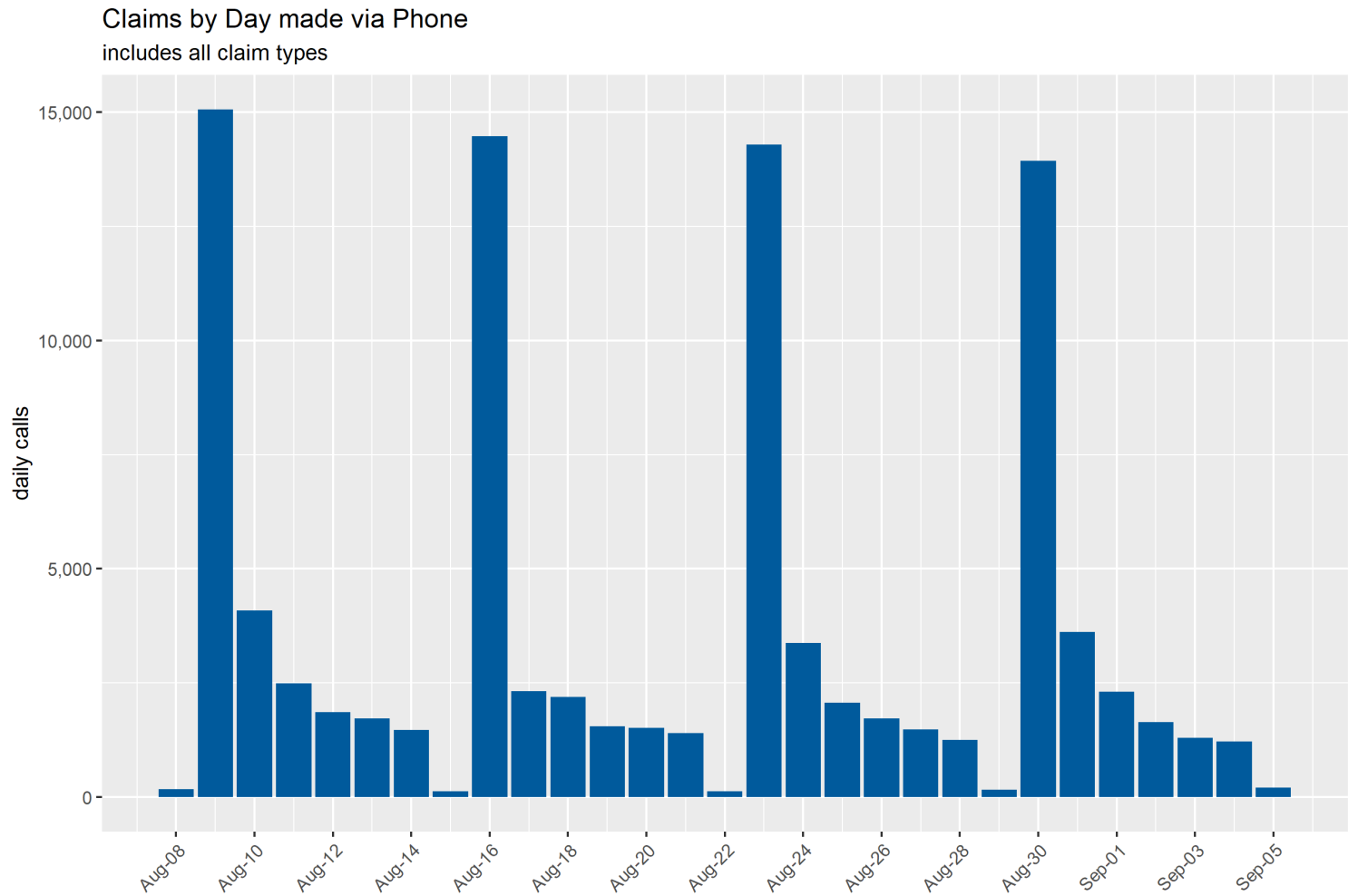
UI Continued Claims Daily Series

Continued Claims for Unemployment Insurance
daily filings since 3/22; line represents 7 day average



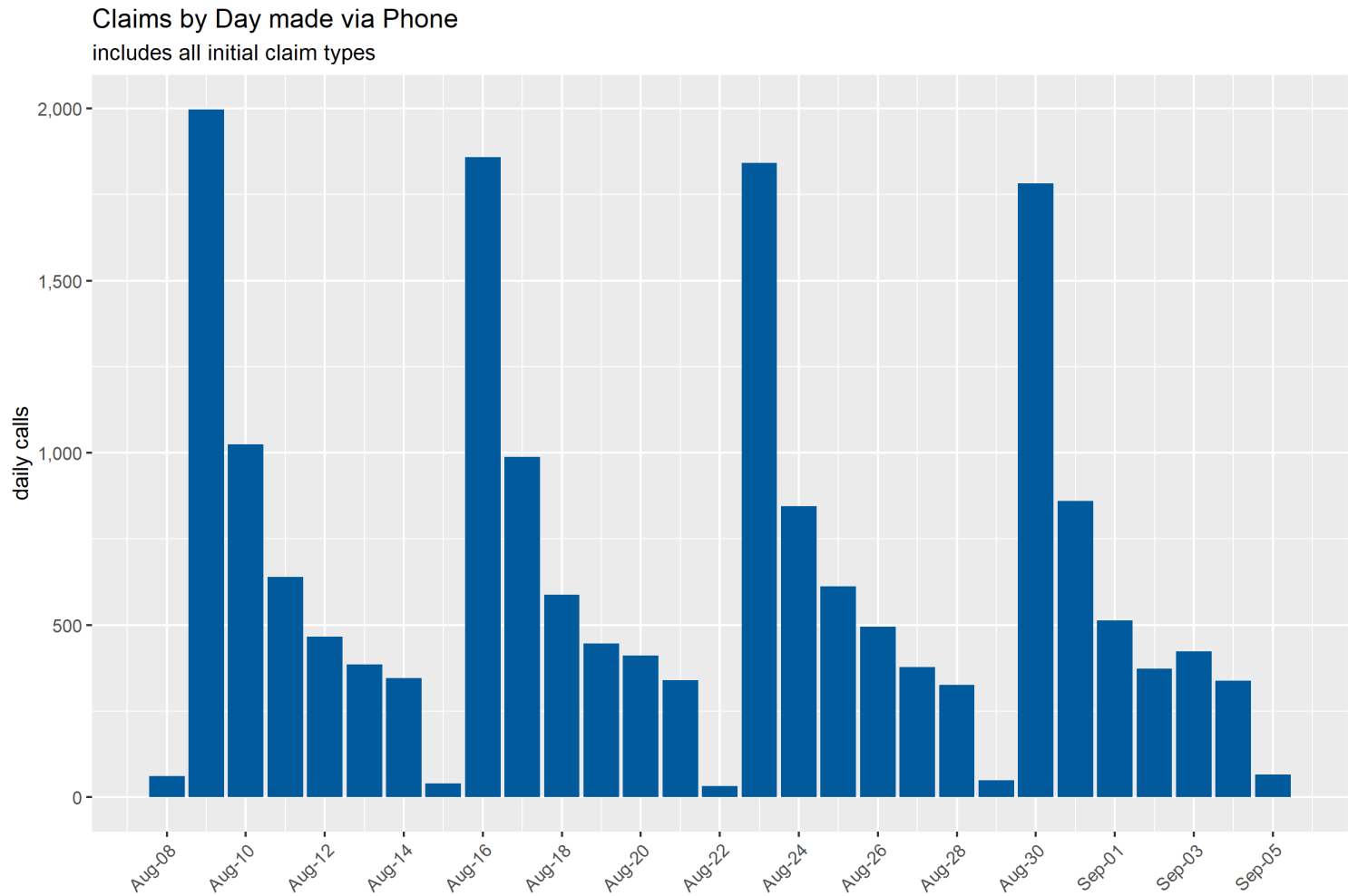
Source: DETR Internal Reporting

Daily Phone Call Volume (All Claim Types)



Source: DETR Internal Reporting

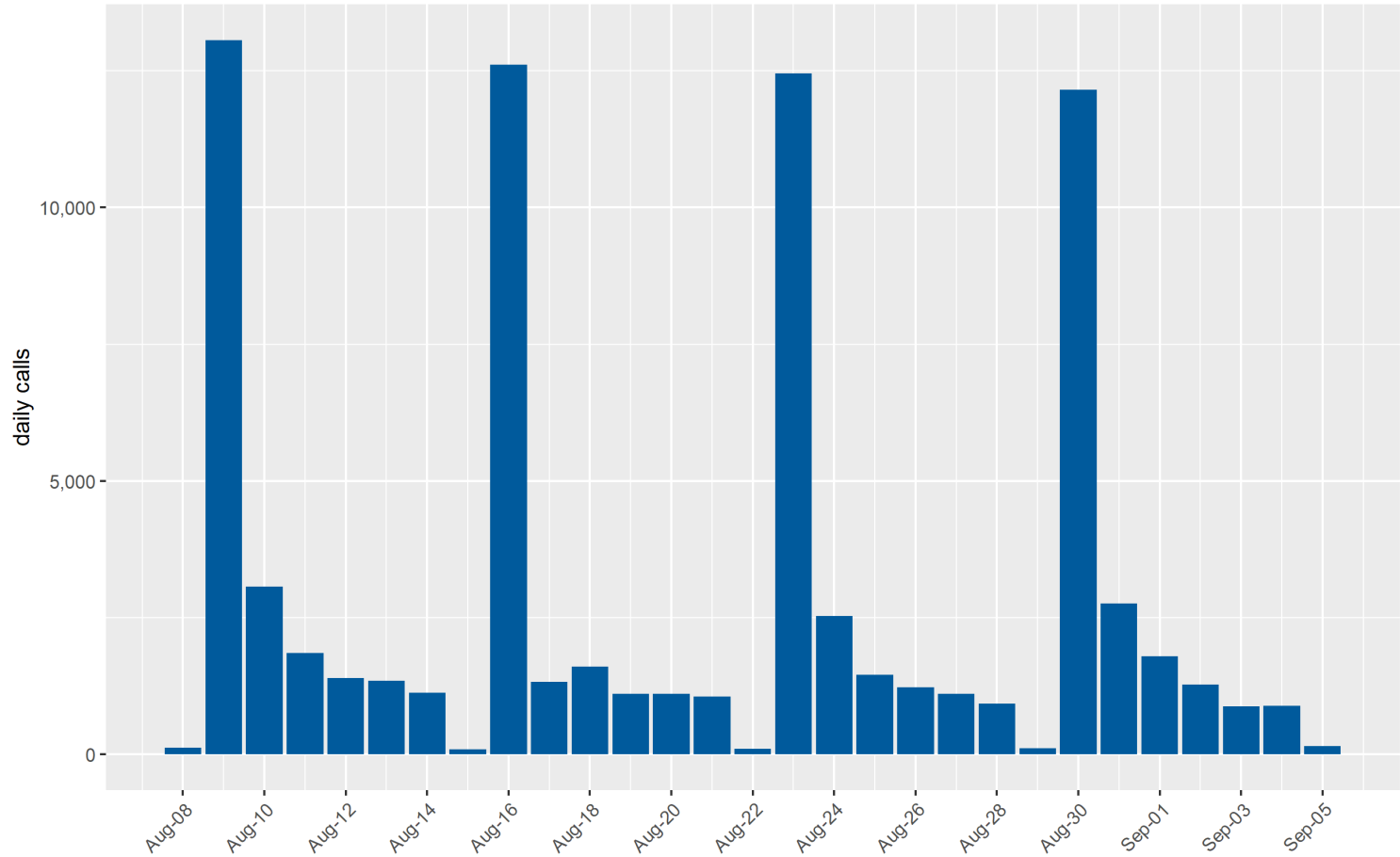
Daily Phone Call Volume (Initial Claims)



Source: DETR Internal Reporting

Daily Phone Call Volume (Continued Claims)

Claims by Day made via Phone
includes continued claims only



Source: DETR Internal Reporting

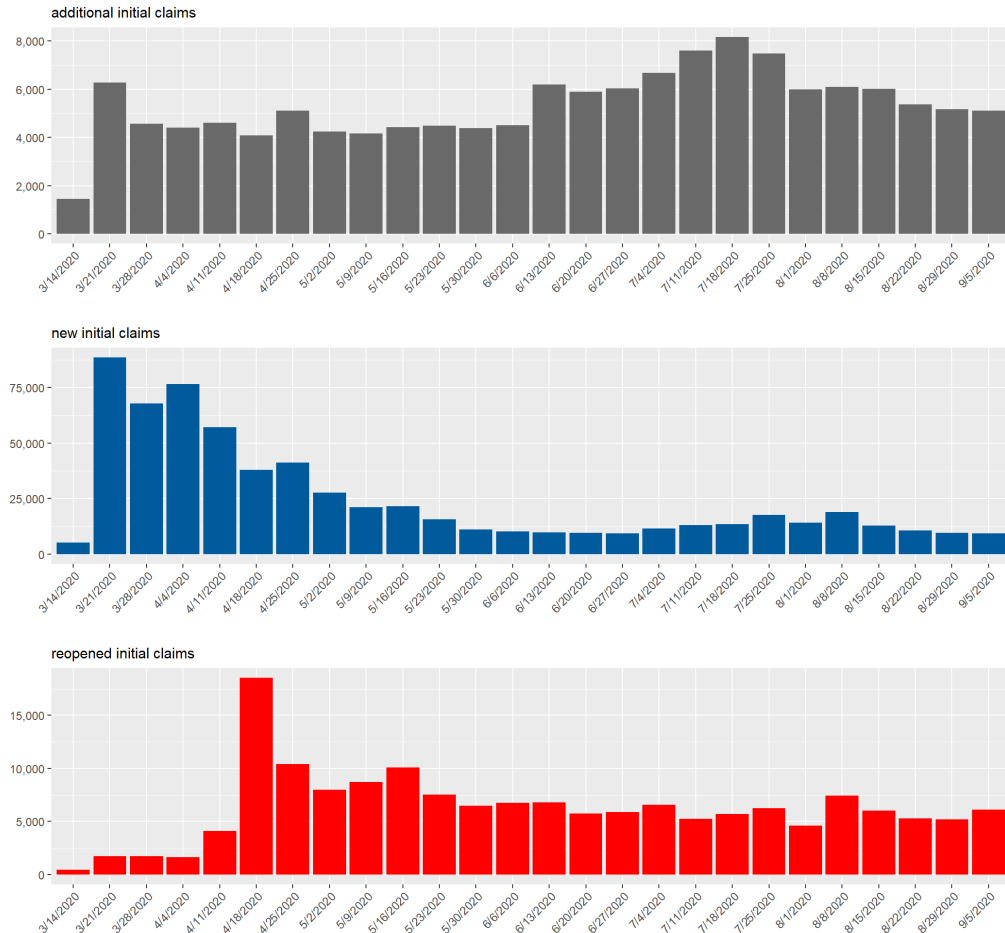
UI Weekly Statistics (Regular UC)

UI Initial Claims by Week

Initial claims totals by type for week ending 9/5/2020.

Weekly data is unofficial and is unlikely to match federal reporting totals due to reporting differences.

Initial Claims for Unemployment Insurance by week ending



Source: DETR Internal Reporting

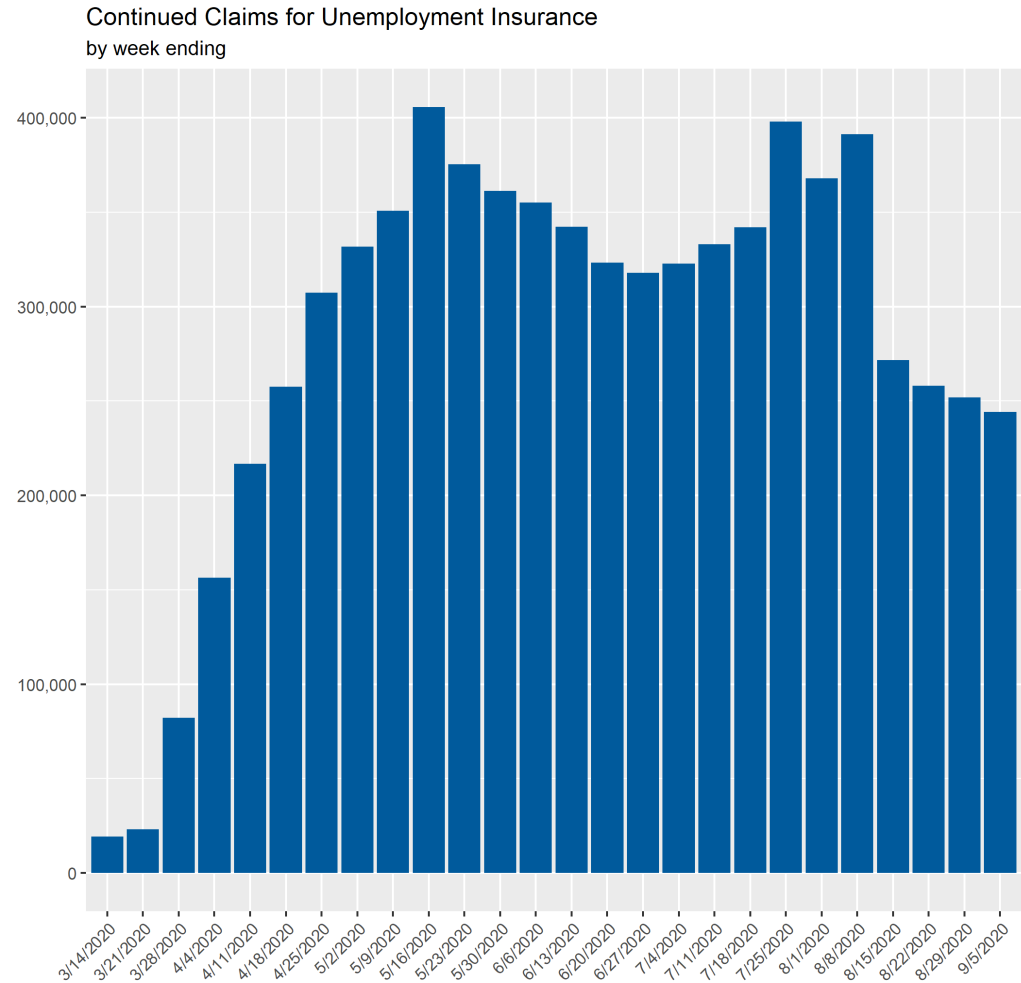
UI Initial Claims by Week

Claim Type	Filing Method	2020-07-11	2020-07-18	2020-07-25	2020-08-01	2020-08-08	2020-08-15	2020-08-22	2020-08-29	2020-09-05
Claim Type & Filing Method										
Additional	CSS	3,485	4,240	3,530	2,494	2,831	2,855	2,330	2,162	2,198
Additional	IVR	4,110	3,923	3,952	3,498	3,252	3,158	3,038	2,999	2,909
Initial	CSS	11,770	12,242	16,613	13,267	17,552	11,724	9,488	8,512	8,395
Initial	IVR	1,368	1,176	1,131	994	1,312	1,172	1,177	1,138	1,044
Reopen	CSS	4,669	5,153	5,540	3,995	6,838	5,454	4,853	4,785	5,716
Reopen	IVR	566	546	714	592	600	568	450	409	403
Filing Method										
Total	CSS	19,924	21,635	25,683	19,756	27,221	20,033	16,671	15,459	16,309
Total	IVR	6,044	5,645	5,797	5,084	5,164	4,898	4,665	4,546	4,356
Total										
Total	All	25,968	27,280	31,480	24,840	32,385	24,931	21,336	20,005	20,665

UI Continued Claims by Week

Continued claims totals for week ending 9/5/2020.

Weekly data is unofficial and is unlikely to match federal reporting totals due to reporting differences.



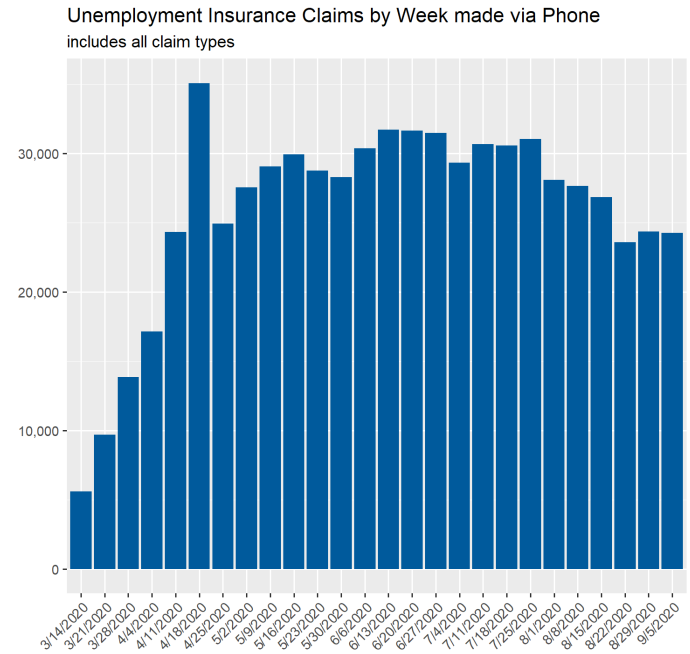
Source: DETR Internal Reporting

UI Continued Claims by Week

Claim Type	Filing Method	2020-07-11	2020-07-18	2020-07-25	2020-08-01	2020-08-08	2020-08-15	2020-08-22	2020-08-29	2020-09-05
Claim Type & Filing Method										
Weekly	CSS	308,511	317,192	372,834	344,986	368,878	249,723	239,042	232,178	224,299
Weekly	IVR	24,626	24,933	25,256	22,994	22,494	21,936	18,928	19,810	19,897
Filing Method										
Total	CSS	308,511	317,192	372,834	344,986	368,878	249,723	239,042	232,178	224,299
Total	IVR	24,626	24,933	25,256	22,994	22,494	21,936	18,928	19,810	19,897
Total										
Total	All	333,137	342,125	398,090	367,980	391,372	271,659	257,970	251,988	244,196

Weekly Call Volume (All Claim Types)

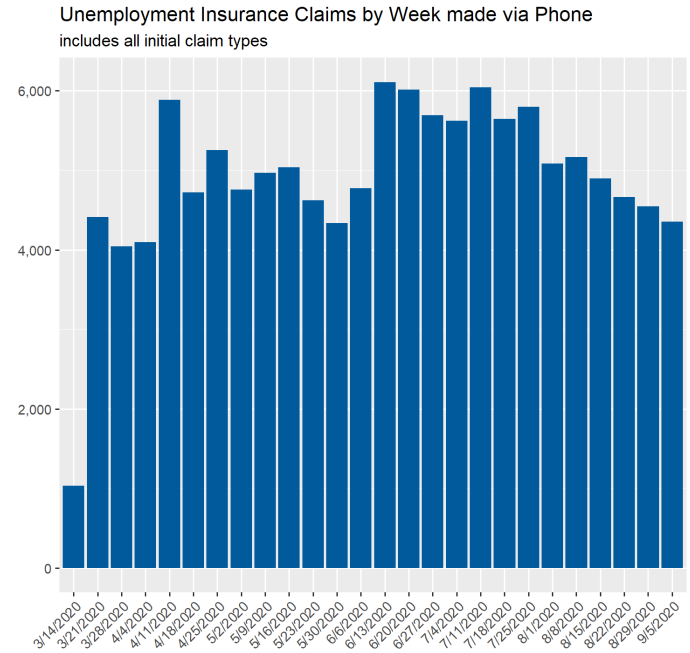
Week	Total Phone Claims	+/- change	% change
6/13/2020	31,716	1,347	4.44%
6/20/2020	31,633	-83	-0.26%
6/27/2020	31,467	-166	-0.52%
7/4/2020	29,316	-2,151	-6.84%
7/11/2020	30,670	1,354	4.62%
7/18/2020	30,578	-92	-0.30%
7/25/2020	31,053	475	1.55%
8/1/2020	28,078	-2,975	-9.58%
8/8/2020	27,658	-420	-1.50%
8/15/2020	26,834	-824	-2.98%
8/22/2020	23,593	-3,241	-12.08%
8/29/2020	24,356	763	3.23%
9/5/2020	24,253	-103	-0.42%



Source: DETR Internal Reporting

Weekly Call Volume (Initial Claims)

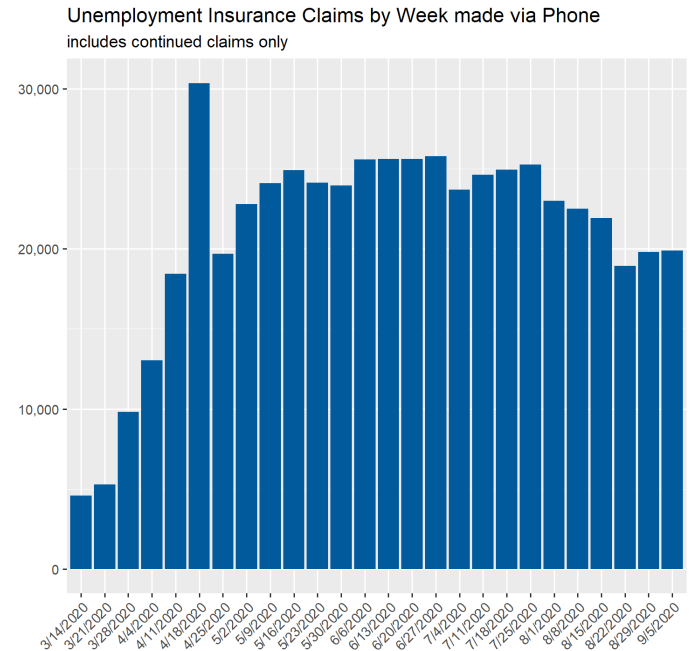
Week	Total Phone Claims	+/- change	% change
6/13/2020	6,110	1,336	27.98%
6/20/2020	6,016	-94	-1.54%
6/27/2020	5,695	-321	-5.34%
7/4/2020	5,623	-72	-1.26%
7/11/2020	6,044	421	7.49%
7/18/2020	5,645	-399	-6.60%
7/25/2020	5,797	152	2.69%
8/1/2020	5,084	-713	-12.30%
8/8/2020	5,164	80	1.57%
8/15/2020	4,898	-266	-5.15%
8/22/2020	4,665	-233	-4.76%
8/29/2020	4,546	-119	-2.55%
9/5/2020	4,356	-190	-4.18%



Source: DETR Internal Reporting

Weekly Call Volume (Continued Claims)

Week	Total Phone Claims	+/- change	% change
6/13/2020	25,606	11	0.04%
6/20/2020	25,617	11	0.04%
6/27/2020	25,772	155	0.61%
7/4/2020	23,693	-2,079	-8.07%
7/11/2020	24,626	933	3.94%
7/18/2020	24,933	307	1.25%
7/25/2020	25,256	323	1.30%
8/1/2020	22,994	-2,262	-8.96%
8/8/2020	22,494	-500	-2.17%
8/15/2020	21,936	-558	-2.48%
8/22/2020	18,928	-3,008	-13.71%
8/29/2020	19,810	882	4.66%
9/5/2020	19,897	87	0.44%



Source: DETR Internal Reporting

UI Claims Activity by County (Regular UC)

UI Daily Initial Claims by County for Week Ending 9/5/2020

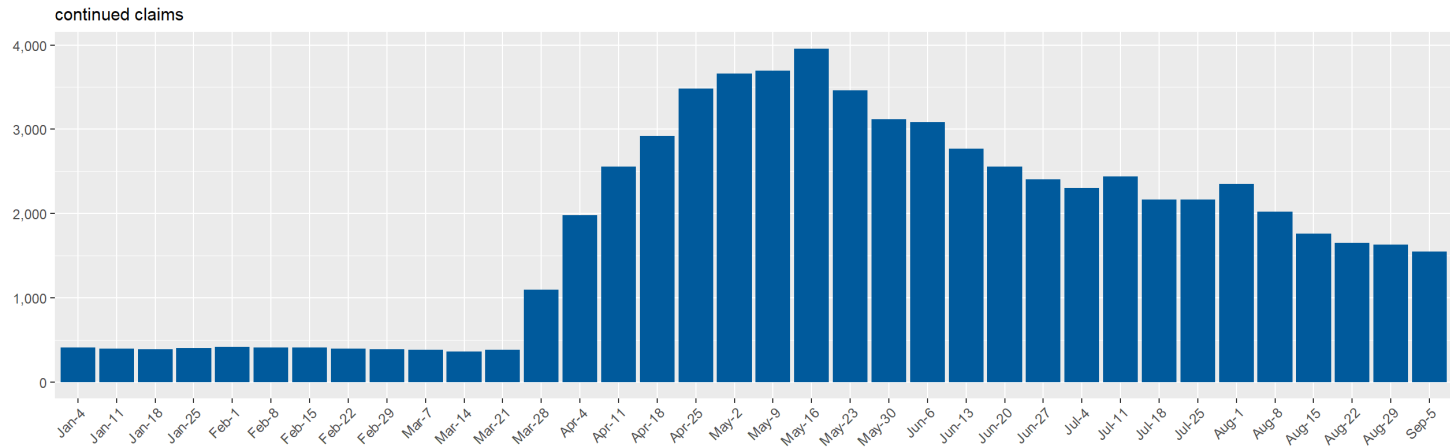
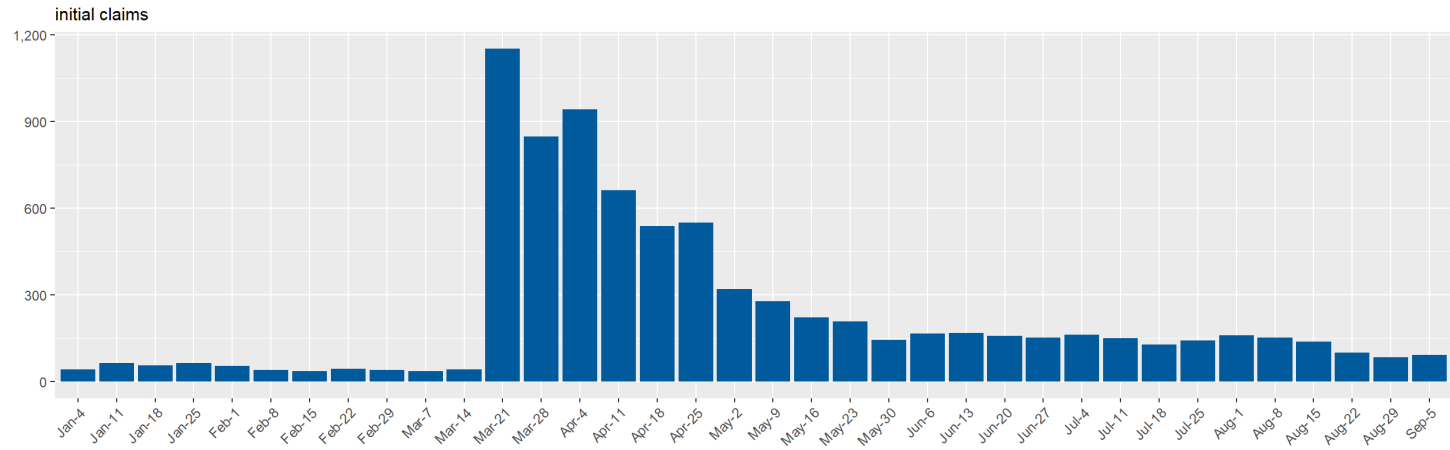
County	2020-08-30	2020-08-31	2020-09-01	2020-09-02	2020-09-03	2020-09-04	2020-09-05	Total
Carson City	9	17	12	7	17	15	4	81
Churchill	3	4	2	5	5	7	0	26
Clark	1,353	1,365	1,155	921	961	662	333	6,750
Douglas	6	11	12	6	12	8	4	59
Elko	7	4	8	3	4	12	2	40
Esmeralda	0	0	1	0	0	0	0	1
Humboldt	4	4	2	3	2	5	3	23
Lander	0	6	1	2	1	0	1	11
Lincoln	0	0	0	1	2	0	0	3
Lyon	12	15	11	8	17	11	4	78
Mineral	0	0	0	2	2	1	1	6
Nye	14	15	16	10	15	10	8	88
OOS	211	411	314	245	309	318	214	2,022
Pershing	2	0	0	0	1	0	0	3
Storey	0	2	1	0	0	0	0	3
Washoe	105	188	124	102	115	88	26	748
White Pine	1	0	1	1	0	1	2	6

UI Daily Continued Claims by County for Week Ending 9/5/2020

County	2020-08-30	2020-08-31	2020-09-01	2020-09-02	2020-09-03	2020-09-04	2020-09-05	Total
Carson City	962	367	135	52	53	59	20	1,648
Churchill	237	75	26	19	9	12	8	386
Clark	112,552	30,469	12,052	5,631	3,697	2,716	1,542	168,659
Douglas	653	225	133	61	49	59	17	1,197
Elko	523	172	83	47	24	12	10	871
Esmeralda	10	3	0	0	1	0	0	14
Eureka	10	2	1	0	0	0	0	13
Humboldt	168	47	21	10	6	17	3	272
Lander	53	14	8	4	2	2	0	83
Lincoln	28	16	7	0	2	0	0	53
Lyon	901	281	128	46	65	33	12	1,466
Mineral	53	15	7	1	3	2	1	82
Nye	857	248	89	60	29	14	17	1,314
OOS	6,870	2,797	1,536	827	620	523	389	13,562
Pershing	17	8	5	1	2	1	0	34
Storey	18	36	9	2	0	0	0	65
Washoe	8,629	3,167	1,484	778	465	420	197	15,140
White Pine	86	21	10	5	3	5	0	130

UI Claims for Carson City

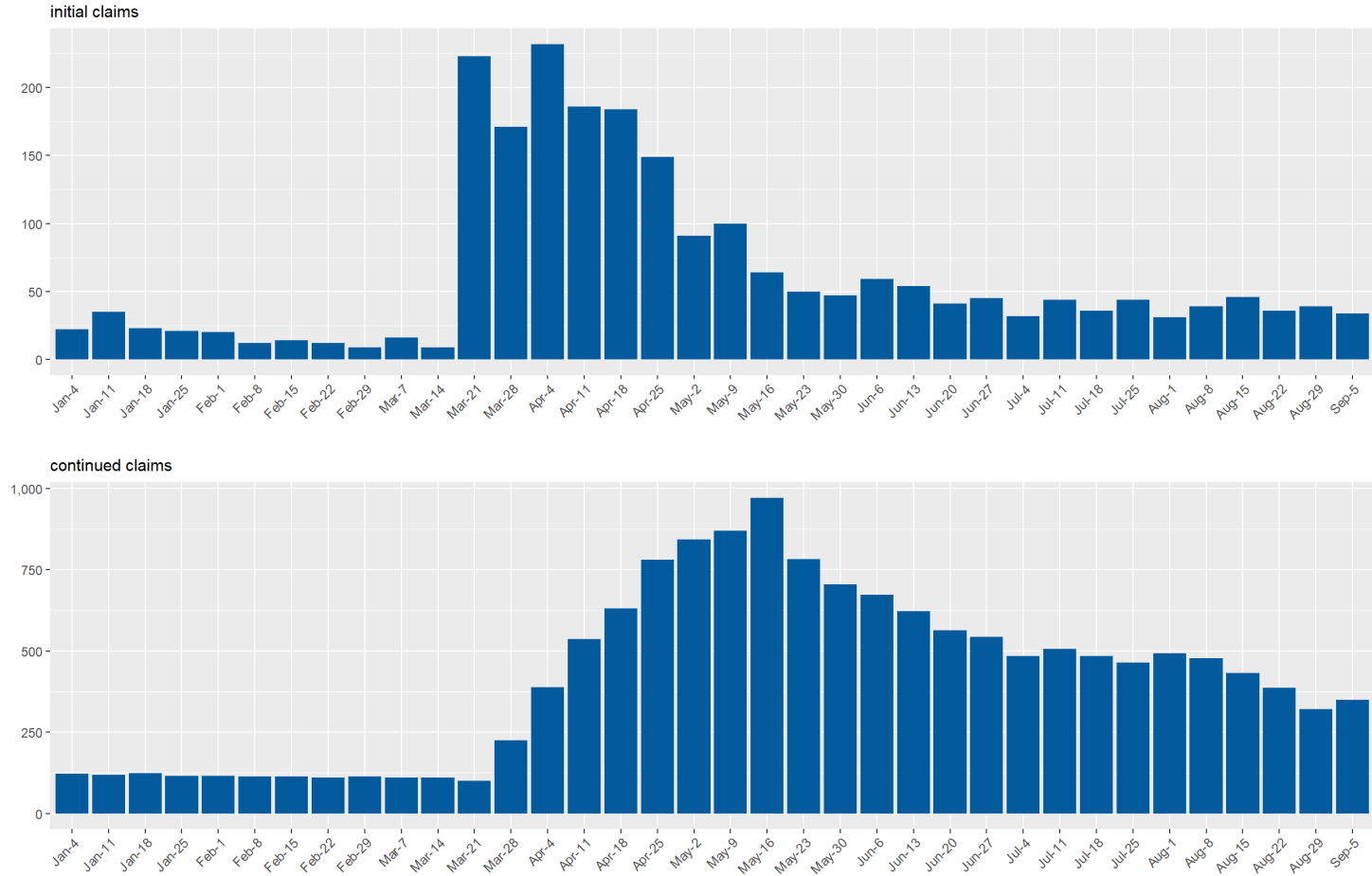
Carson City Unemployment Insurance Claims by Week since January 2020



Source: DETR Internal Reporting

UI Claims for Churchill County

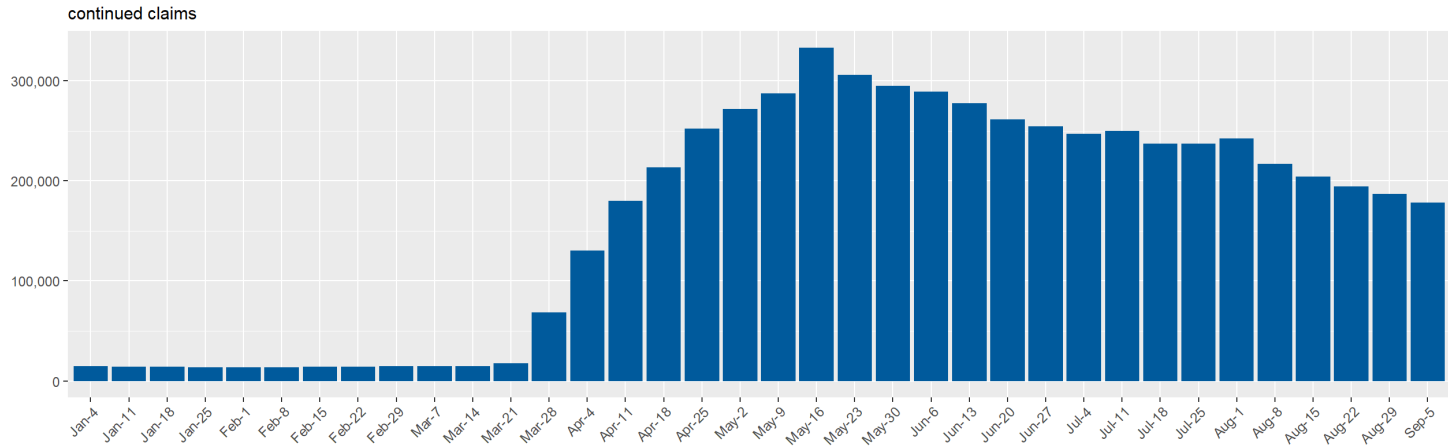
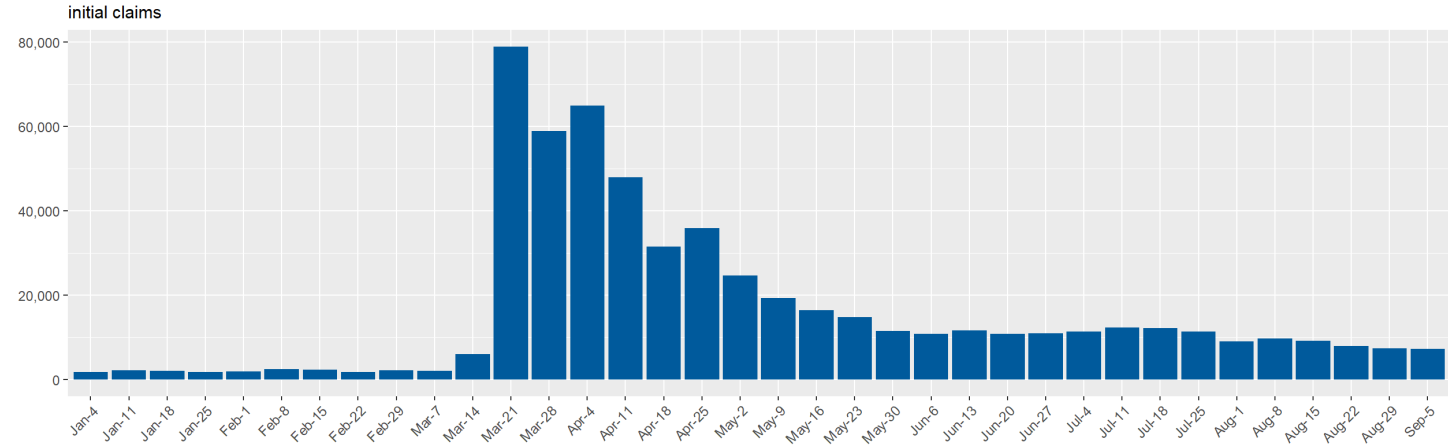
Churchill County Unemployment Insurance Claims by Week since January 2020



Source: DETR Internal Reporting

UI Claims for Clark County

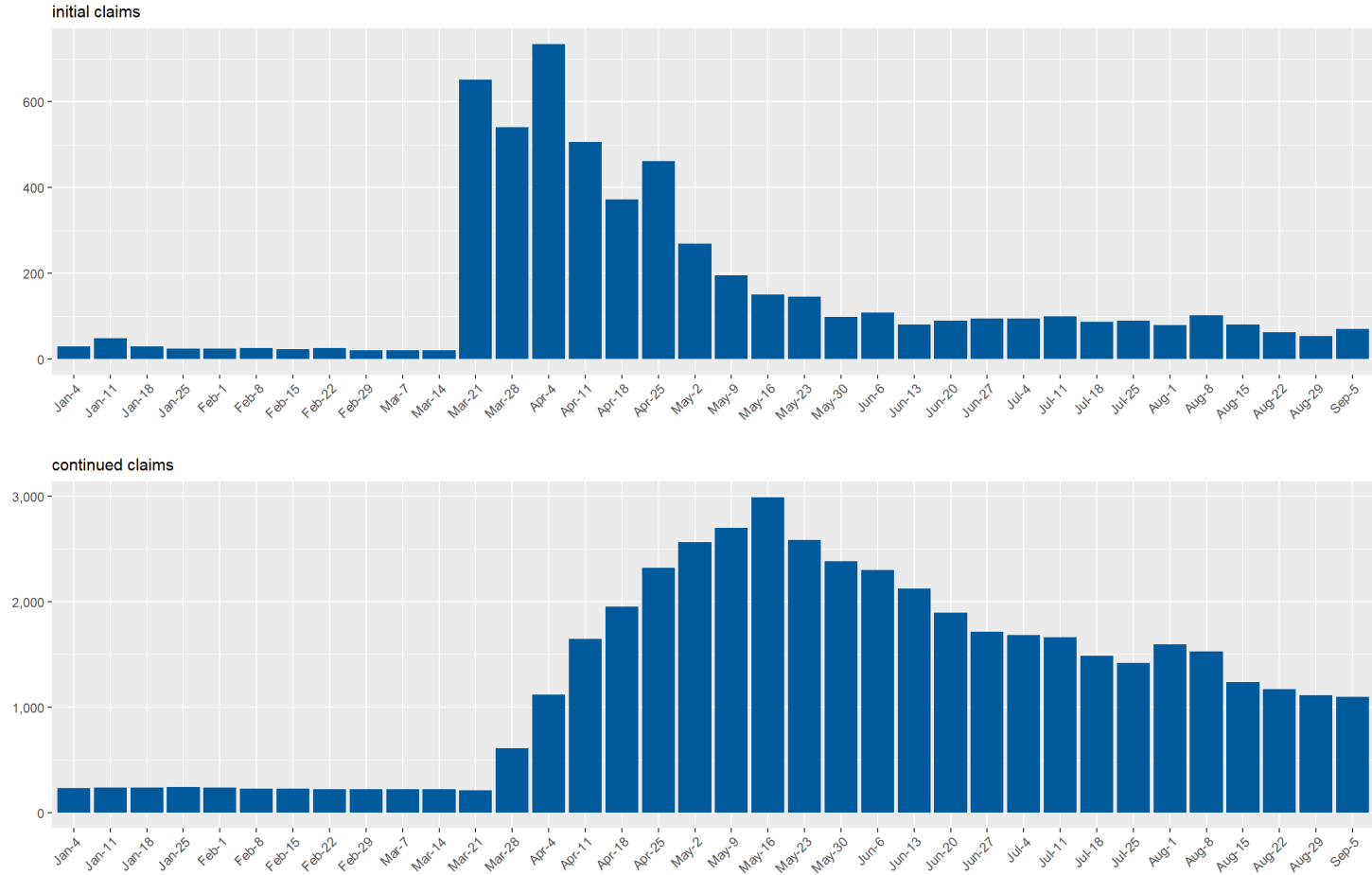
Clark County Unemployment Insurance Claims by Week since January 2020



Source: DETR Internal Reporting

UI Claims for Douglas County

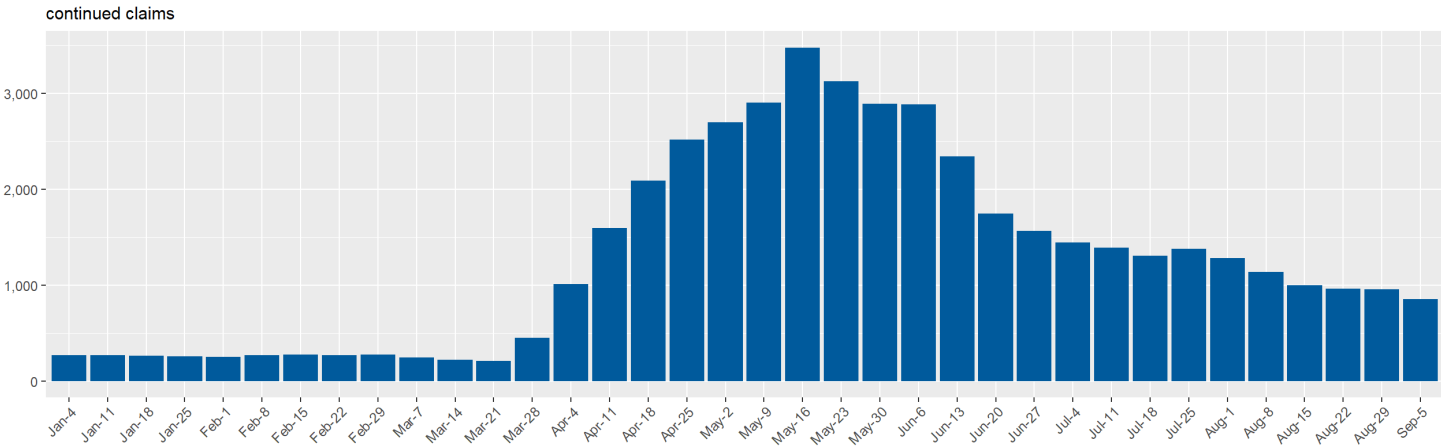
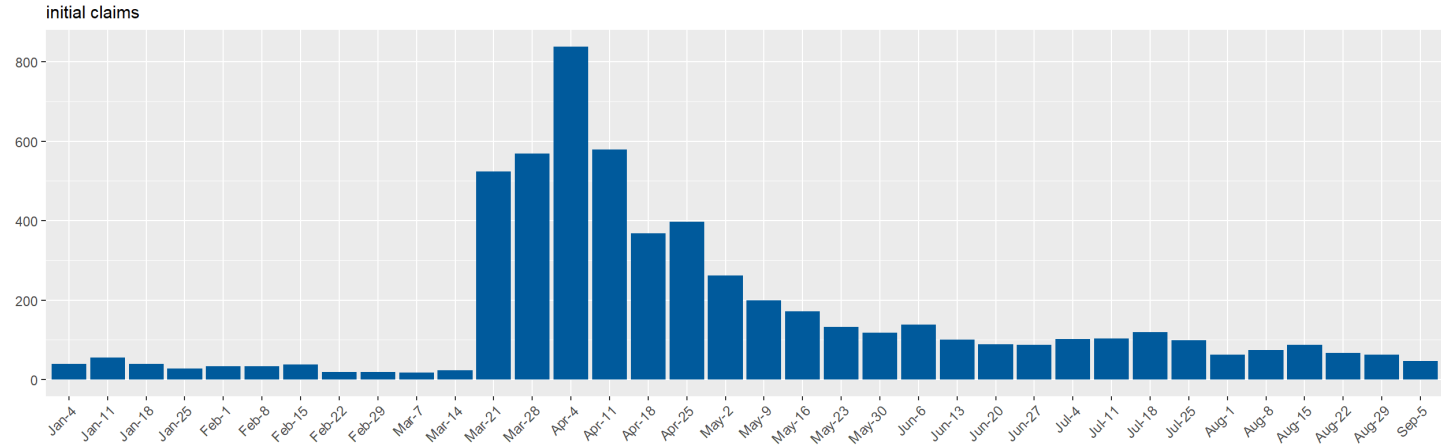
Douglas County Unemployment Insurance Claims by Week since January 2020



Source: DETR Internal Reporting

UI Claims for Elko County

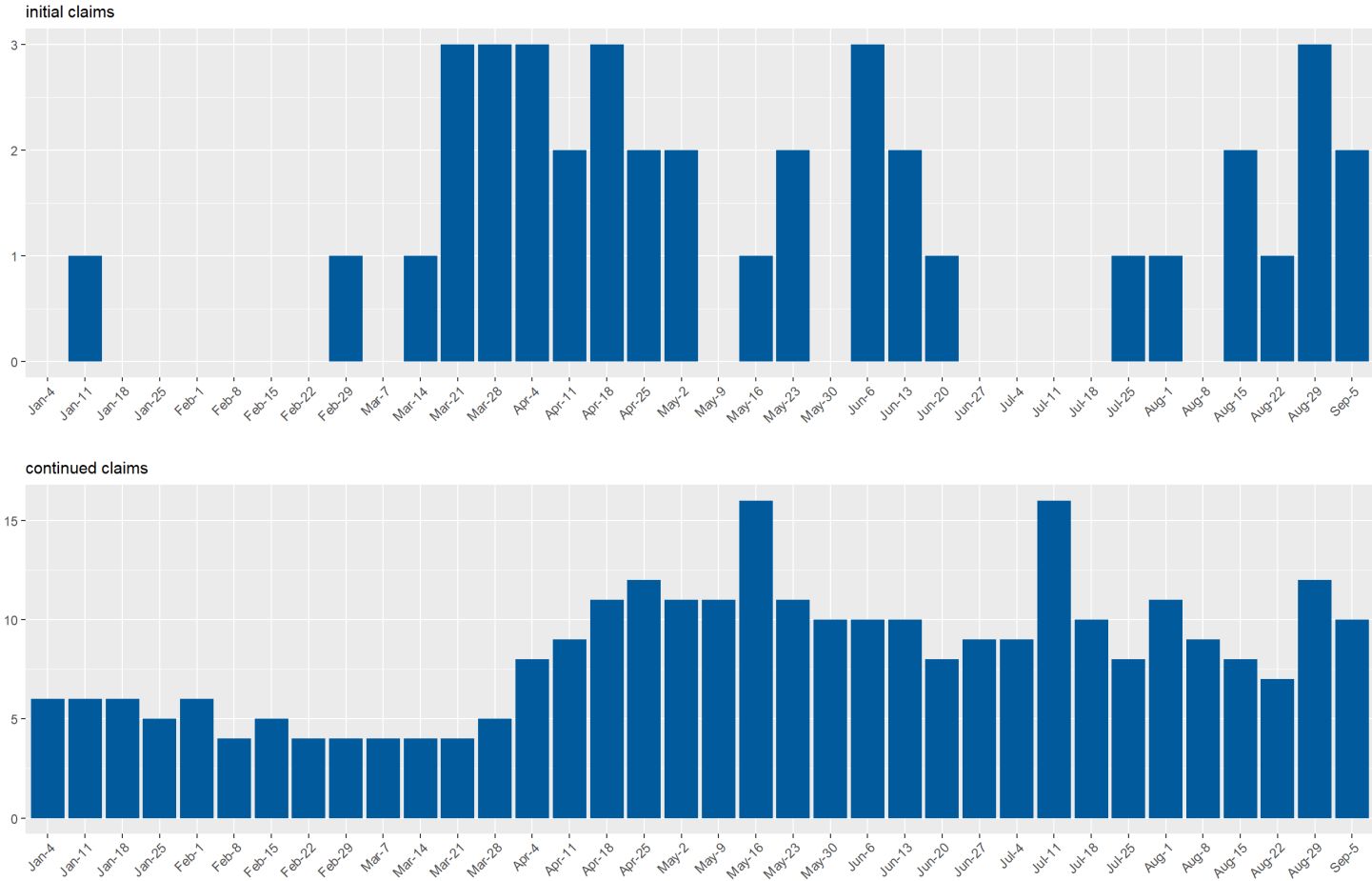
Elko County Unemployment Insurance Claims by Week since January 2020



Source: DETR Internal Reporting

UI Claims for Esmeralda County

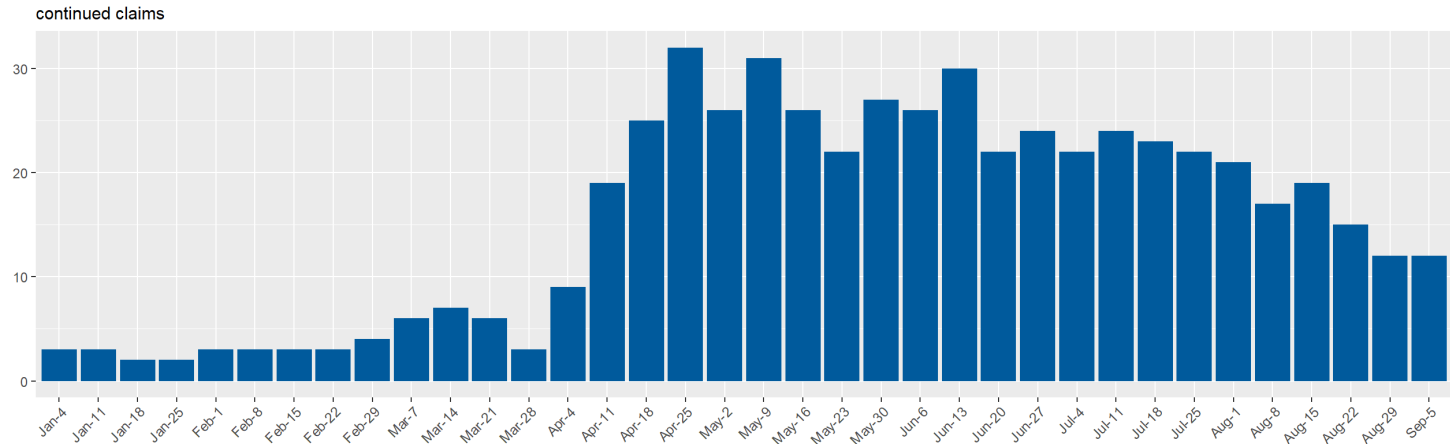
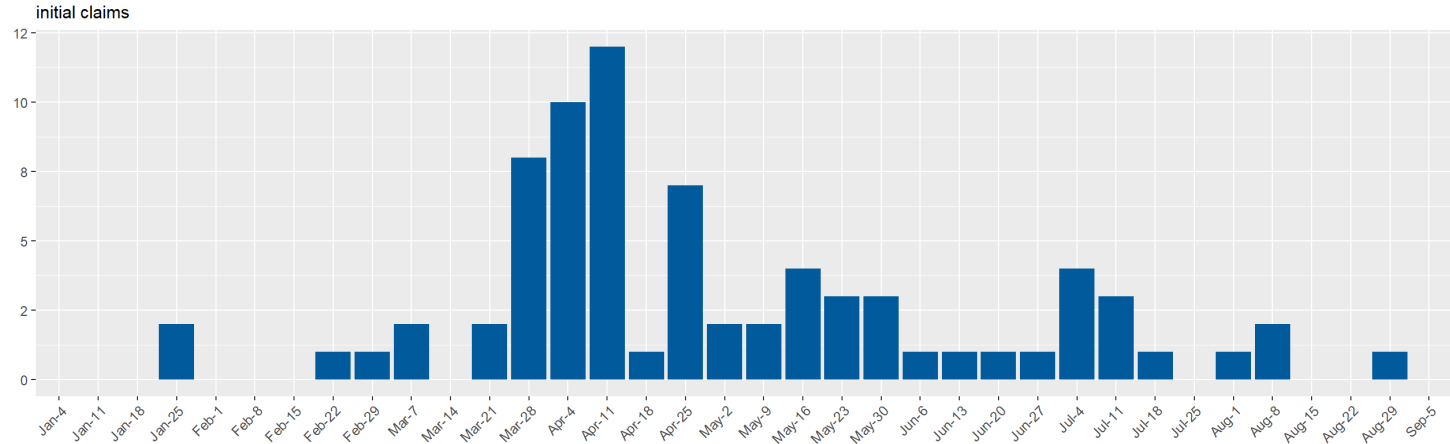
Esmeralda County Unemployment Insurance Claims by Week since January 2020



Source: DETR Internal Reporting

UI Claims for Eureka County

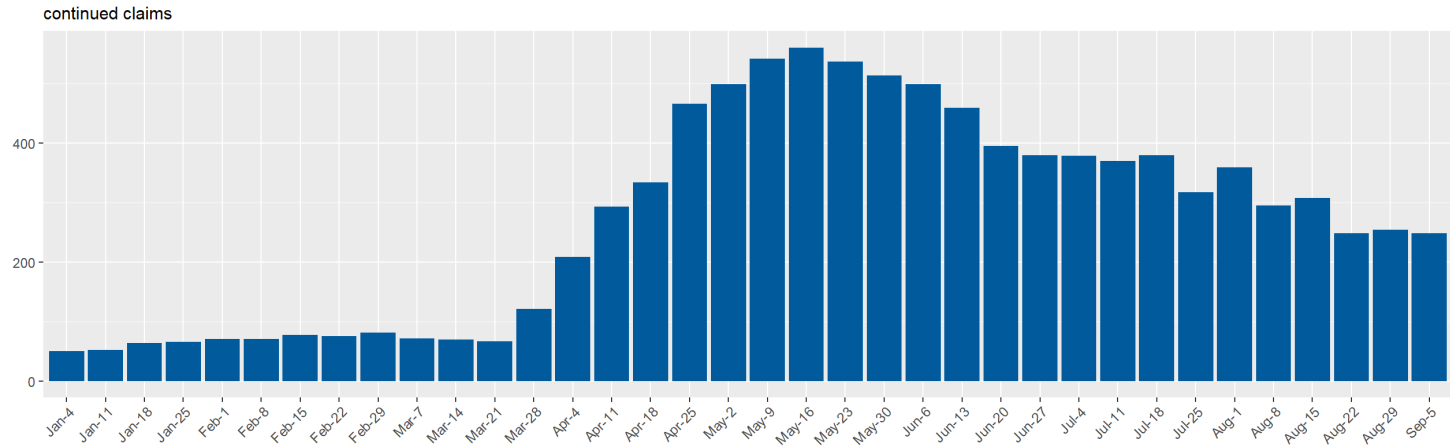
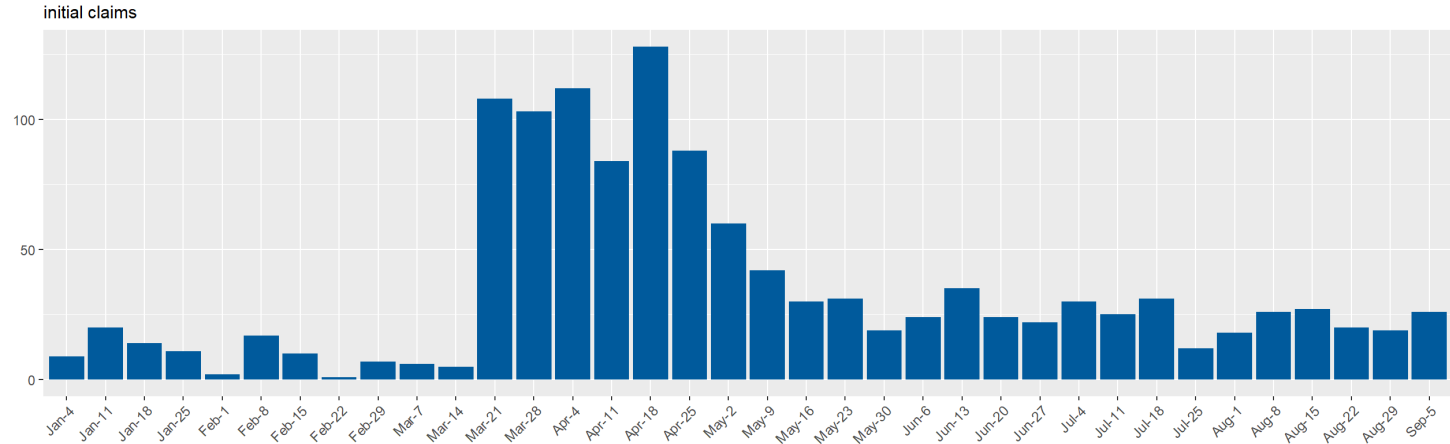
Eureka County Unemployment Insurance Claims by Week since January 2020



Source: DETR Internal Reporting

UI Claims for Humboldt County

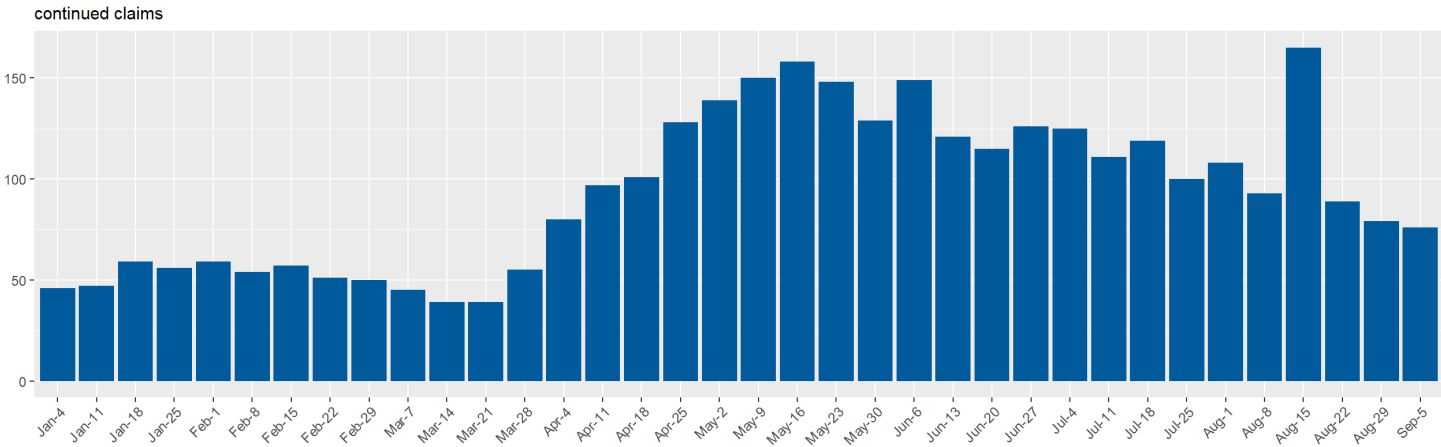
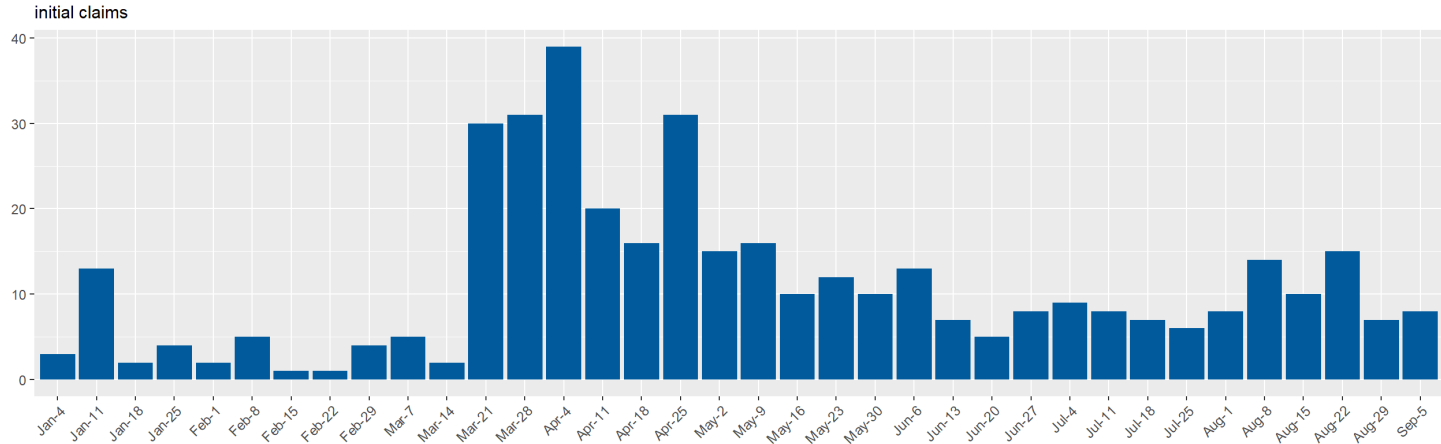
Humboldt County Unemployment Insurance Claims by Week since January 2020



Source: DETR Internal Reporting

UI Claims for Lander County

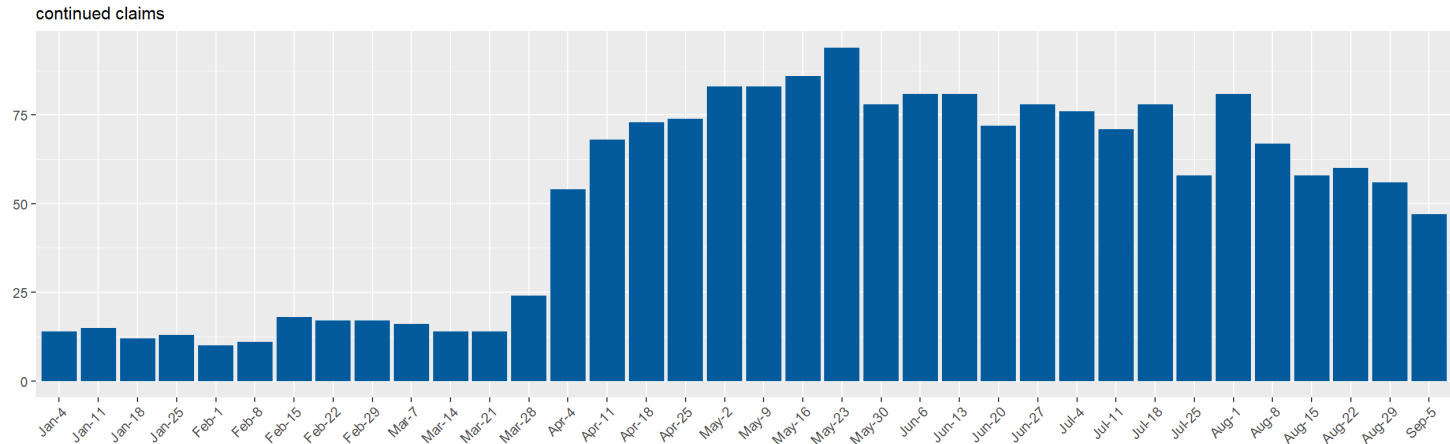
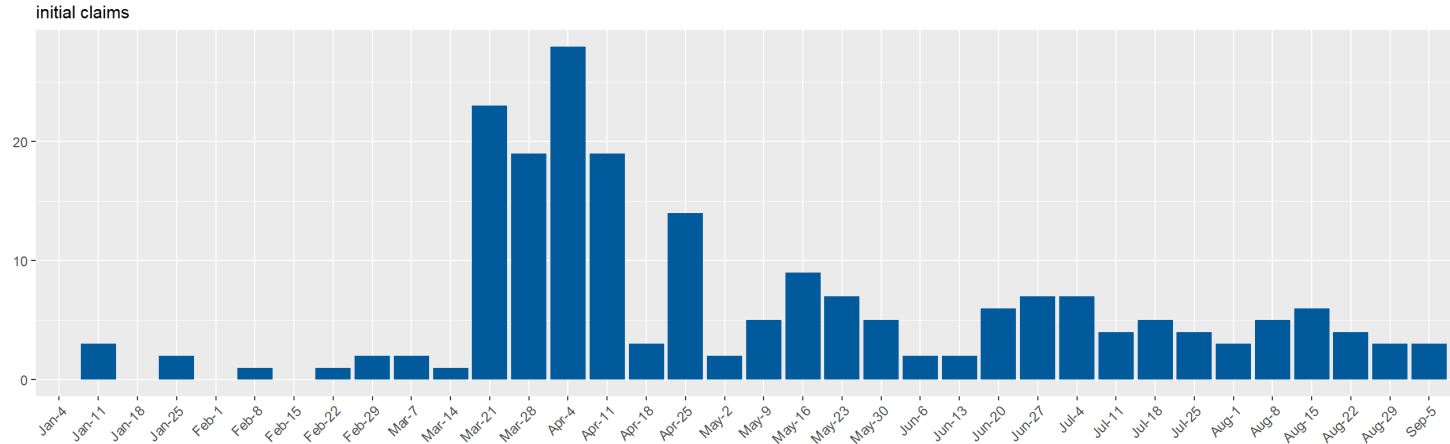
Lander County Unemployment Insurance Claims by Week since January 2020



Source: DETR Internal Reporting

UI Claims for Lincoln County

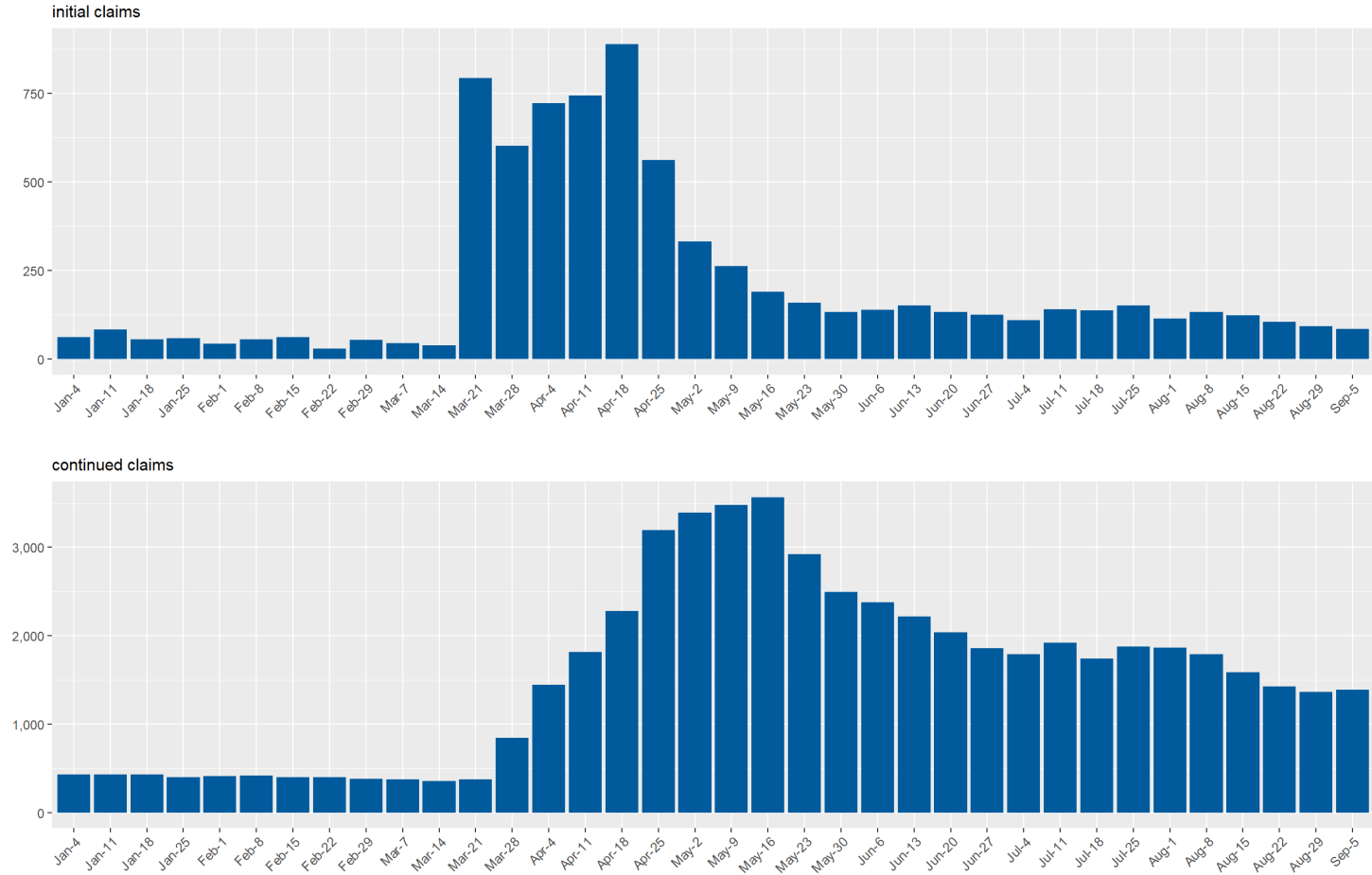
Lincoln County Unemployment Insurance Claims by Week since January 2020



Source: DETR Internal Reporting

UI Claims for Lyon County

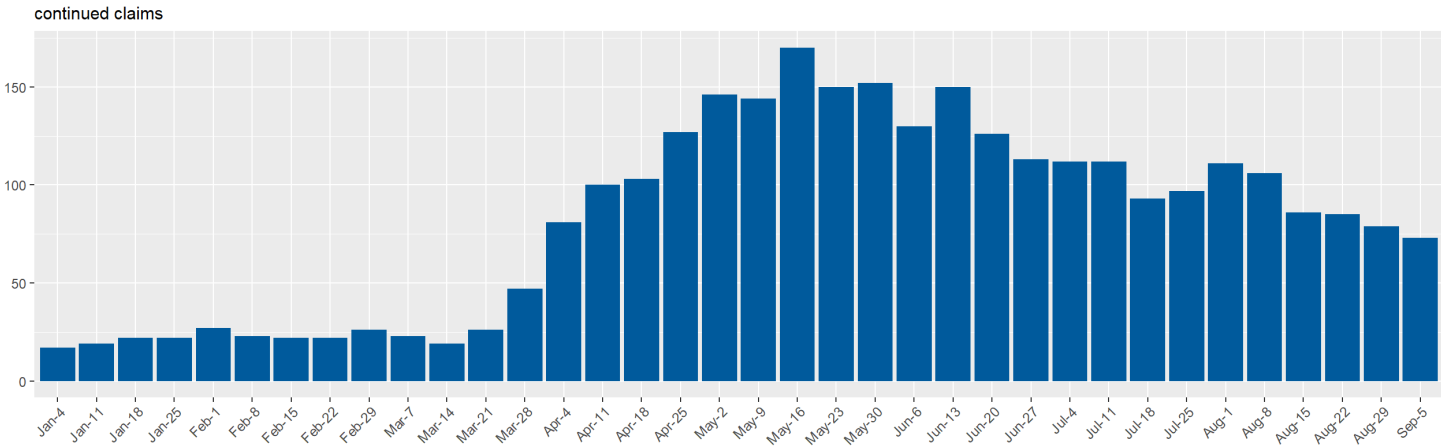
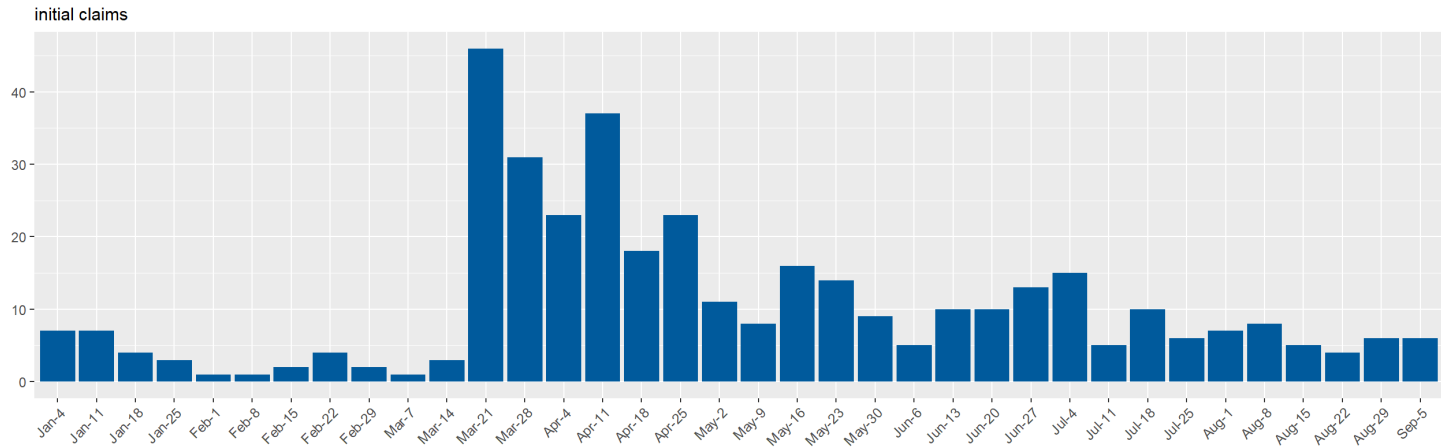
Lyon County Unemployment Insurance Claims by Week since January 2020



Source: DETR Internal Reporting

UI Claims for Mineral County

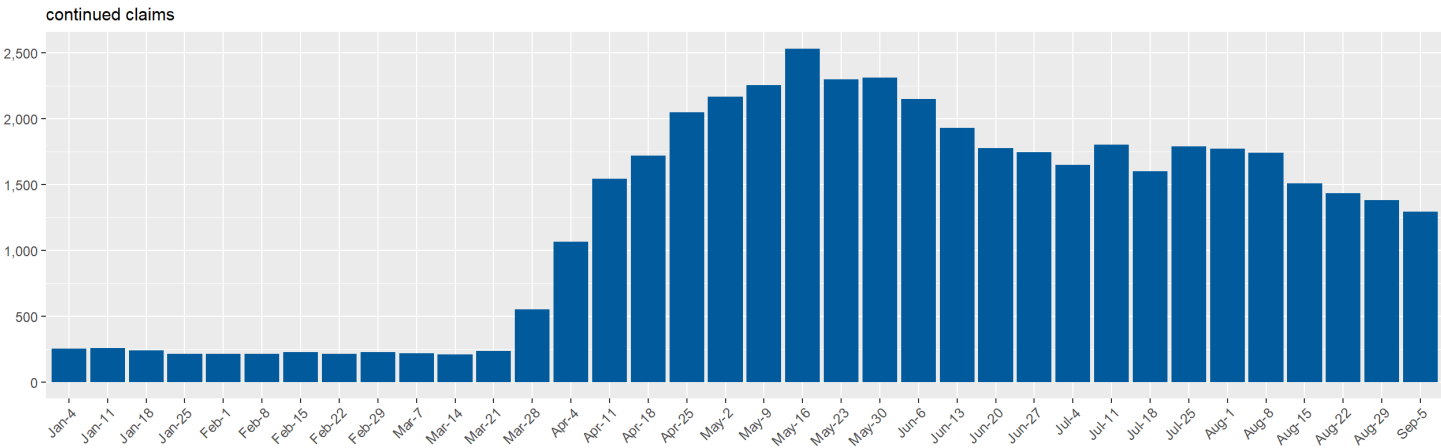
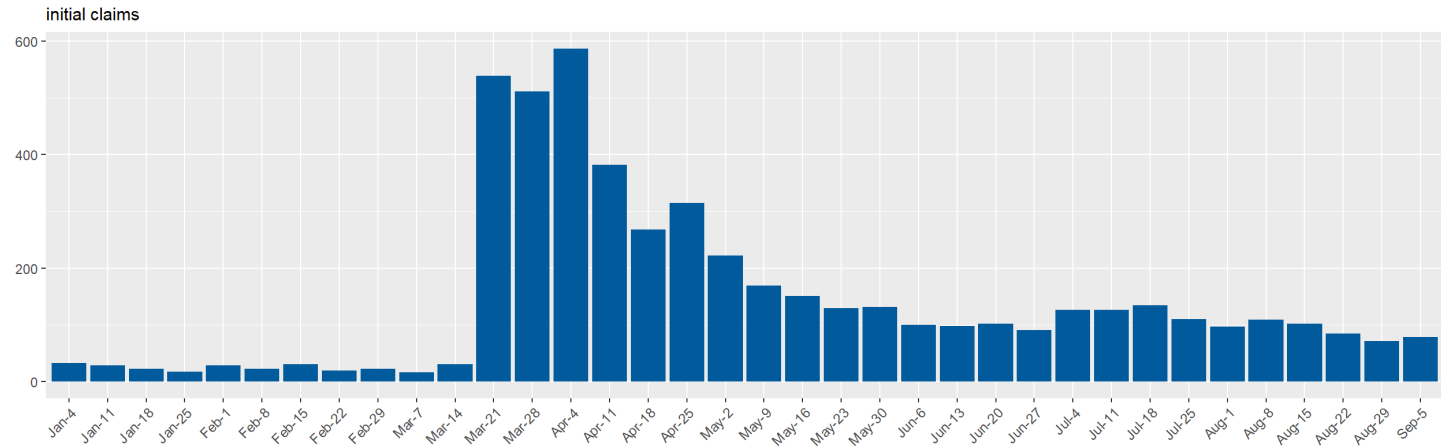
Mineral County Unemployment Insurance Claims by Week since January 2020



Source: DETR Internal Reporting

UI Claims for Nye County

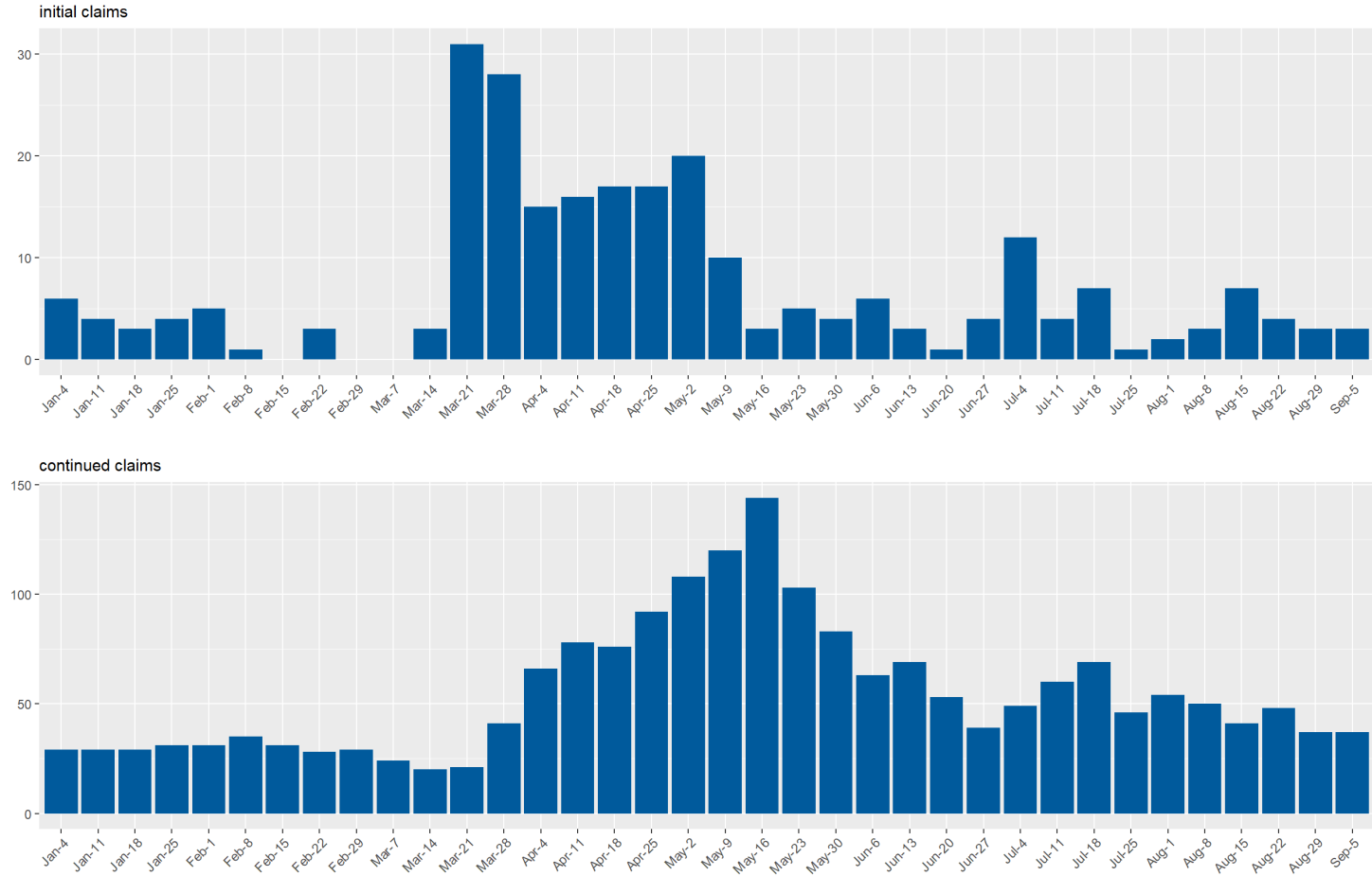
Nye County Unemployment Insurance Claims by Week since January 2020



Source: DETR Internal Reporting

UI Claims for Pershing County

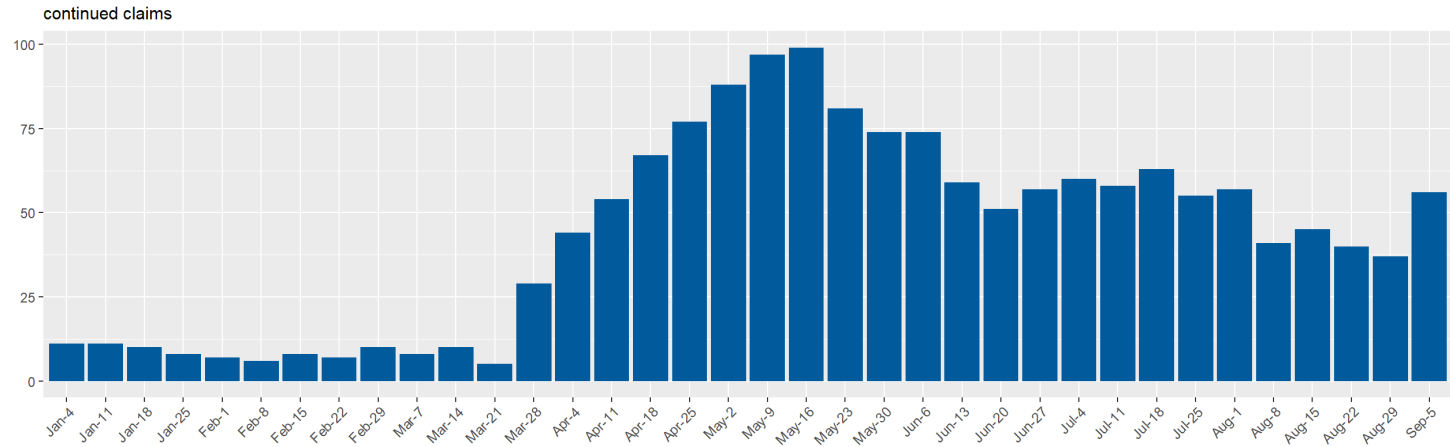
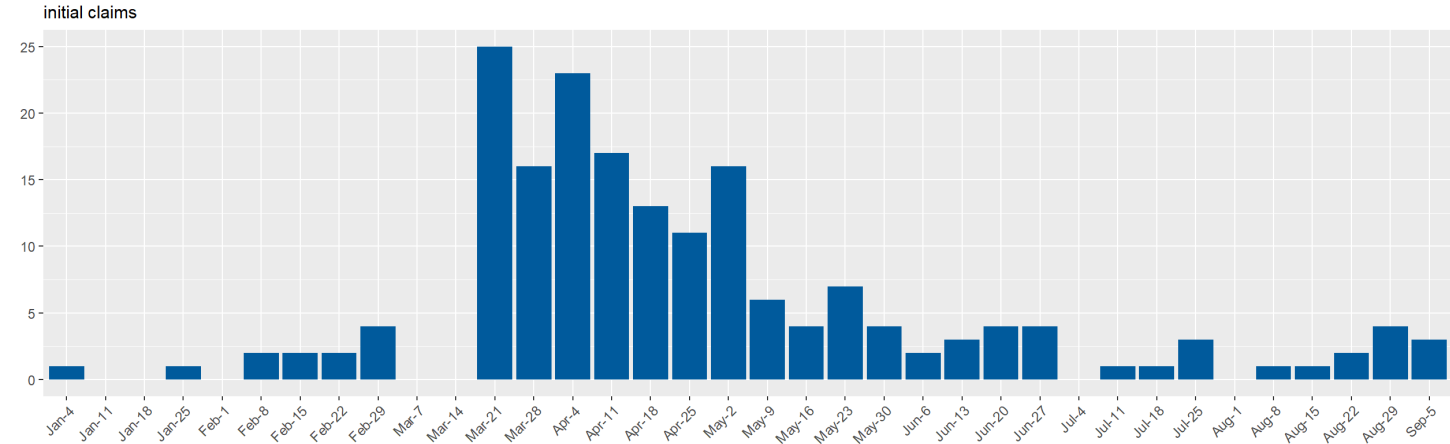
Pershing County Unemployment Insurance Claims by Week since January 2020



Source: DETR Internal Reporting

UI Claims for Storey County

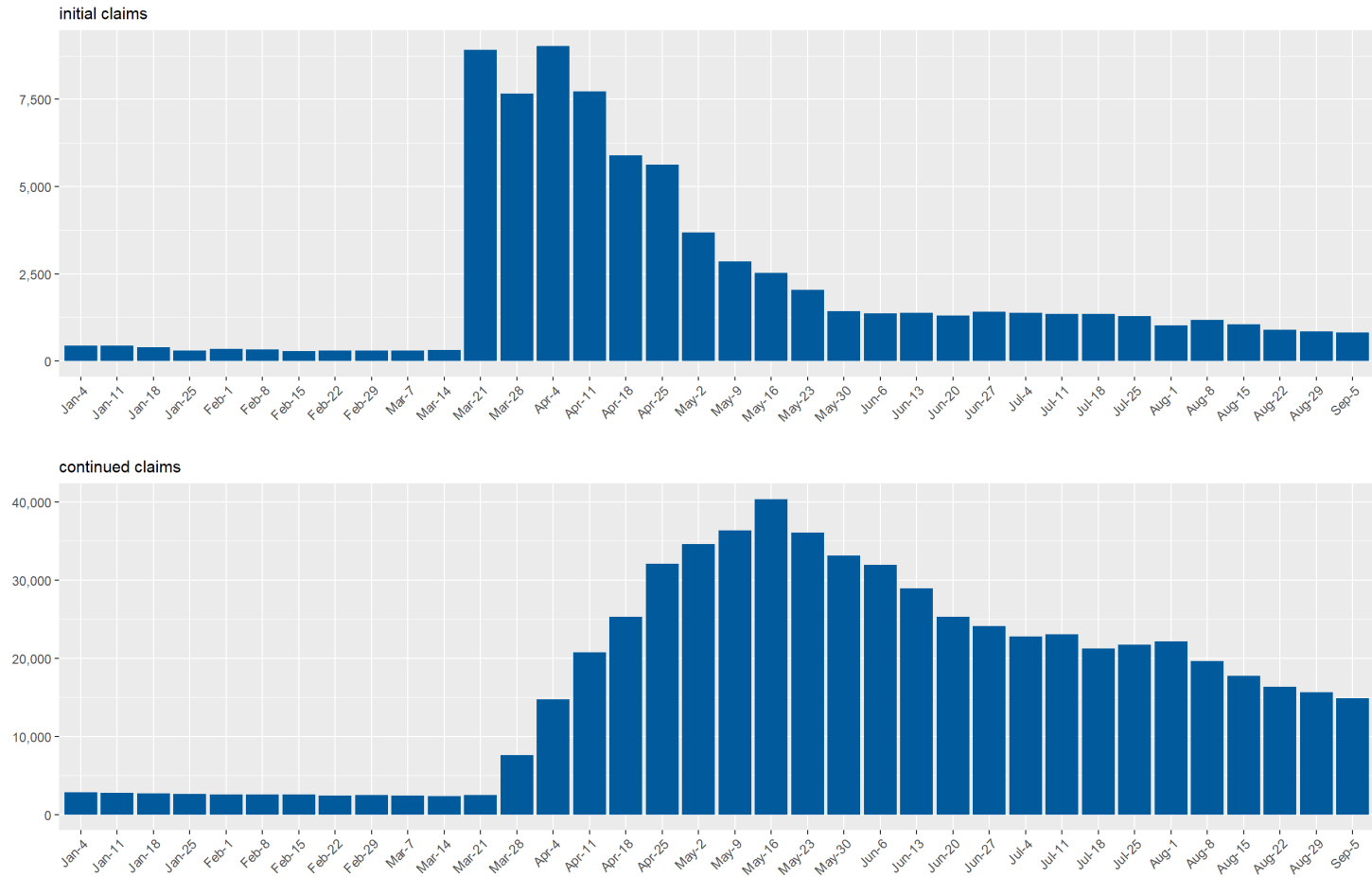
Storey County Unemployment Insurance Claims by Week since January 2020



Source: DETR Internal Reporting

UI Claims for Washoe County

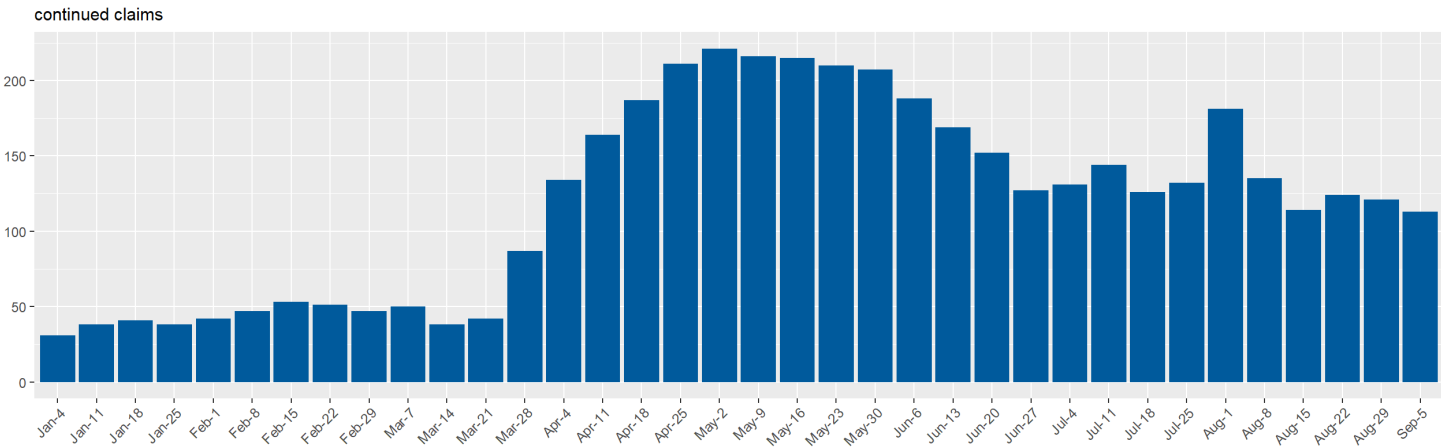
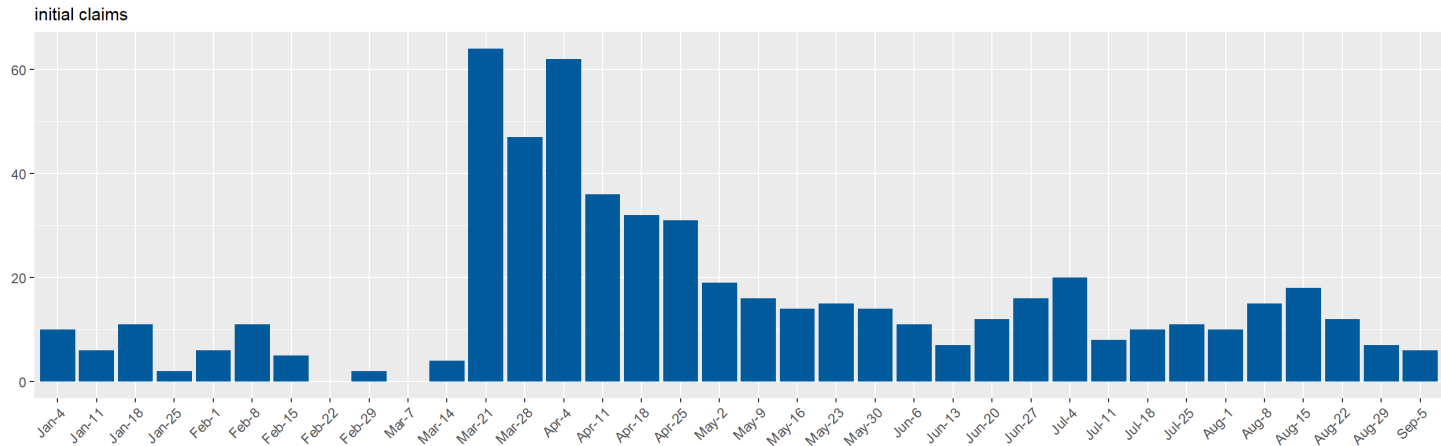
Washoe County Unemployment Insurance Claims by Week since January 2020



Source: DETR Internal Reporting

UI Claims for White Pine County

White Pine County Unemployment Insurance Claims by Week since January 2020



Source: DETR Internal Reporting

Data Dashboard Page

In effort to limit the overall length of this report, an interactive report was created that includes weekly data for all programs. This data is available for download on the "Data" tab of the Weekly Claims Characteristics by Program report below.

Weekly Reports

Weekly Claims Dashboard

The claims data contained on the ETA 539 report are used in current economic analysis of unemployment trends in Nevada.

Weekly Claims Characteristics by Program

This report provides weekly information about the characteristics of claimants in Nevada for all programs.

Weekly Claims by County

The claims data contained in this dashboard provide unemployment insurance trends by county in the State of Nevada. This dashboard allows for exploration of these trends.

Monthly Reports

Monthly Claims Dashboard

The ETA 5159 report contains monthly information on claims activities and on the number and amount of payments under state unemployment insurance laws. The data on this report provides the basis for many common UI measures such as average duration, exhaustion rates, weeks compensated, and benefits paid. This dashboard allows for exploration of these measures and trends in the State of Nevada.

Monthly Claims Demographics

The ETA 203 report provides information about the characteristics of Unemployment Insurance (UI) claimants in Nevada. This data is useful in describing the population of claimants and determining how that population changes over time and under various conditions. It can also be compared with characteristic figures of the total unemployed as published by the Bureau of Labor Statistics (BLS).

Glossary of Terms

Initial Claim: Any notice of unemployment filed to request a determination of eligibility for unemployment insurance benefits, or to begin a subsequent period of eligibility within a period of eligibility. Initial claims measure emerging unemployment in the state.

Additional Claim: An initial Claim which reopens a previously existing claim, where the claimant stopped filing due to intervening employment.

Reopened Claim: A reopened claim is filed if you have previously filed a claim but never submitted any weekly claims.

Continued Claim: After an initial claim determines a claimant is eligible for unemployment insurance benefits, the claimant's weekly benefit claims are counted under continued claims. Continued claims in aggregate represents the insured unemployed receiving benefits in the state, and is used for economic purposes.

Credits

Special thanks to all the R and RStudio developers that built the packages to make this possible!

Packages used in this report: xaringan, xaringantheme, tidyverse, rmarkdown, viridis, scales, data.table, RcppRoll, kableExtra, knitr, patchwork, ggforce, ggthemes

Prepared by:
Department of Employment, Training & Rehabilitation
Research & Analysis Bureau